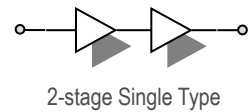


Features

- $S_{21} = 27.0 \text{ dB @ } 950 \text{ MHz}$
= $25.0 \text{ dB @ } 1250 \text{ MHz}$
- NF of 0.65 dB over Frequency
- Unconditionally Stable
- Single 5V Supply
- High OIP3 @ Low Current

Description

The plerow™ ALN-series is the compactly designed surface-mount module for the use of the LNA with or without the following gain blocks in the infrastructure equipment of the mobile wireless (CDMA, GSM, PCS, PHS, WCDMA, DMB, WLAN, WiBro, WiMAX), GPS, satellite communication terminals, CATV and so on. It has an exceptional performance of low noise figure, high gain, high OIP3, and low bias current. The stability factor is always kept more than unity over the application band in order to ensure its unconditionally stable implementation to the application system environment. The surface-mount module package including the completed matching circuit and other components necessary just in case allows very simple and convenient implementation onto the system board in mass production level.



Specifications (in Production)

Typ. @ $T = 25^\circ\text{C}$, $V_s = 5 \text{ V}$, Freq. = 1100 MHz, $Z_{o,\text{sys}} = 50 \text{ ohm}$

Parameter	Unit	Specifications		
		Min	Typ	Max
Frequency Range	MHz	950		1250
Gain	dB	25	26	
Gain Flatness	dB		± 1.0	± 1.1
Noise Figure	dB		0.65	0.70
Output IP3	dBm	29.5	30.5	
S11 / S22	dB			-18 / -10
Output P1dB	dBm	16.5	17.5	
Switching Time ⁽³⁾	μsec		-	
Supply Current	mA		80	100
Supply Voltage	V		5	
Impedance	Ω		50	
Max. RF Input Power	dBm	C.W 23 ~ 25 (before fail)		
Package Type & Size	mm	Surface Mount Type, 13Wx13Lx3.8H		

Operating temperature is -55°C to $+85^\circ\text{C}$.

1) OIP3 is measured with two tones at an output power of 3 dBm / tone separated by 1 MHz.

2) S11/S22 (max) is the worst value within the frequency band.

3) Switching time means the time that takes for output power to get stabilized to its final level after switching DC voltage from 0 V to V_s .

More Information

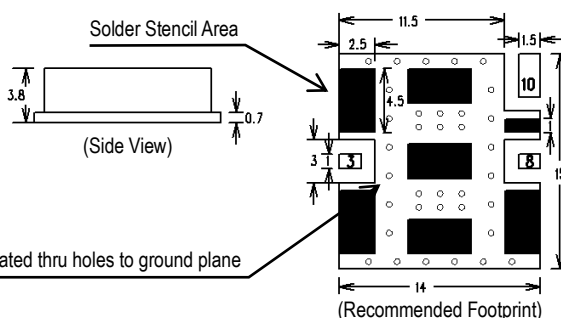
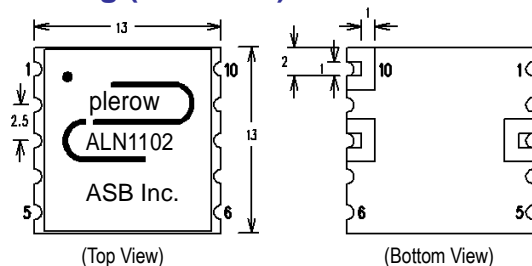
Website: www.asb.co.kr

E-mail: sales@asb.co.kr

Tel: (82) 42-528-7223

Fax: (82) 42-528-7222

Outline Drawing (Unit: mm)



Pin Number	Function
3	RF In
8	RF Out
10	V_s
Others	Ground

Note: 1. The number and size of ground via holes in a circuit board is critical for thermal RF grounding considerations.

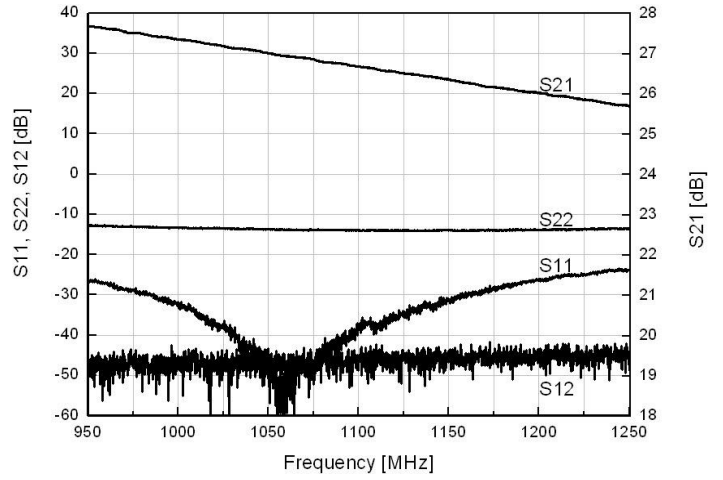
2. We recommend that the ground via holes be placed on the bottom of all ground pins for better RF and thermal performance, as shown in the drawing at the left side.

**Typical Performance
(Measured)**

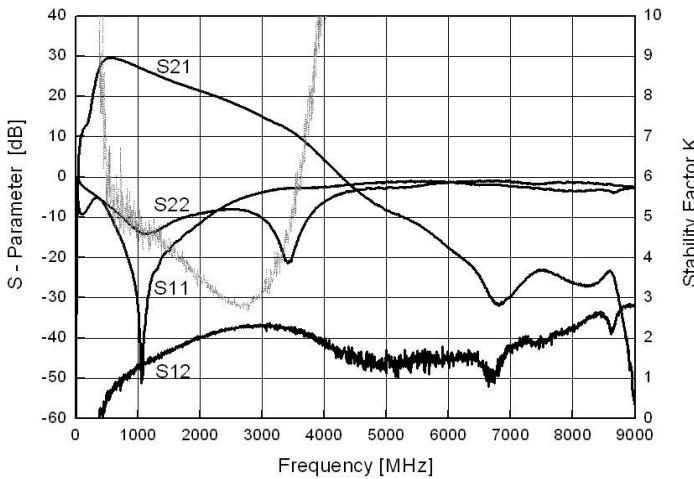
950~1250 MHz

+5 V

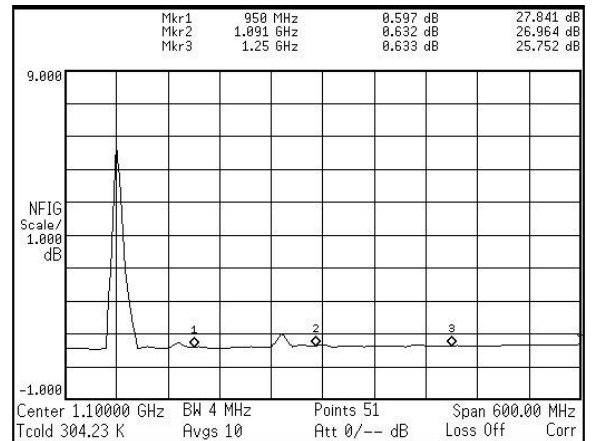
S-parameters



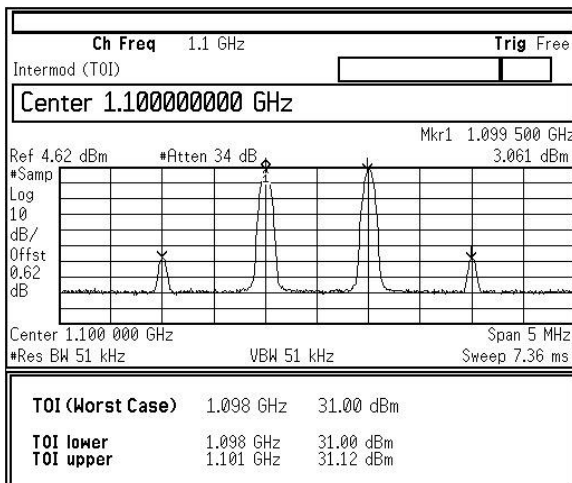
S-parameters & K Factor



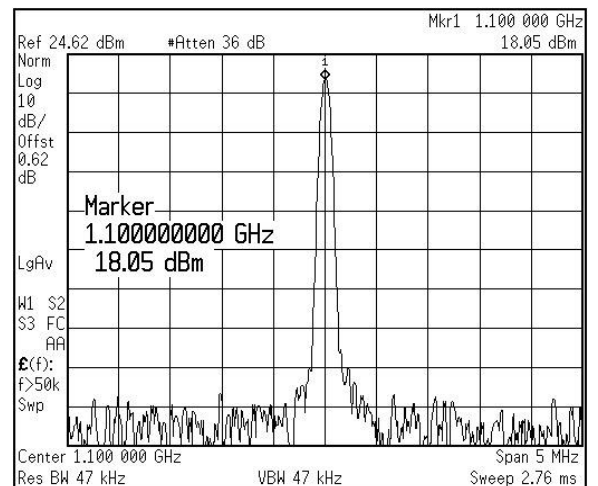
Noise Figure



OIP3



P1dB



RF Performance with Voltage Change

1. S-parameter

	950 MHz			1100 MHz				1250 MHz		
	S21 (dB)	S11 (dB)	S22 (dB)	S21 (dB)	G/F (dB)	S11 (dB)	S22 (dB)	S21 (dB)	S11 (dB)	S22 (dB)
4.50 V	27.00	-20.28	-17.04	25.98	2.02	-20.08	-18.01	24.98	-18.80	-17.10
4.75 V	27.25	-21.31	-17.02	26.24	2.02	-21.27	-18.31	25.23	-19.74	-17.44
5.00 V	27.49	-22.20	-17.05	26.46	2.03	-22.45	-18.55	25.46	-20.65	-17.74
5.25 V	27.65	-22.87	-17.04	26.63	2.03	-23.41	-18.67	25.62	-21.44	-18.01
5.50 V	27.81	-23.33	-17.03	26.80	2.03	24.37	-18.76	25.78	-22.10	-18.17

2. OIP3, P1dB & NF

	950 MHz			1100 MHz			1250 MHz		
	OIP3 (dBm)	P1dB (dBm)	NF (dB)	OIP3 (dBm)	P1dB (dBm)	NF (dB)	OIP3 (dBm)	P1dB (dBm)	NF (dB)
4.50 V	30.53	17.66	0.672	29.70	16.99	0.683	29.07	16.20	0.678
4.75 V	32.15	18.60	0.668	31.42	18.17	0.683	30.81	17.42	0.687
5.00 V	33.56	19.50	0.661	32.98	19.11	0.698	32.16	18.50	0.682
5.25 V	34.69	20.09	0.669	34.13	19.97	0.707	33.47	19.40	0.694
5.50 V	35.75	20.75	0.679	35.19	20.58	0.724	34.55	20.23	0.688

Note: tested at room temperature.

RF Performance with Operating Temperature

1. S-parameter

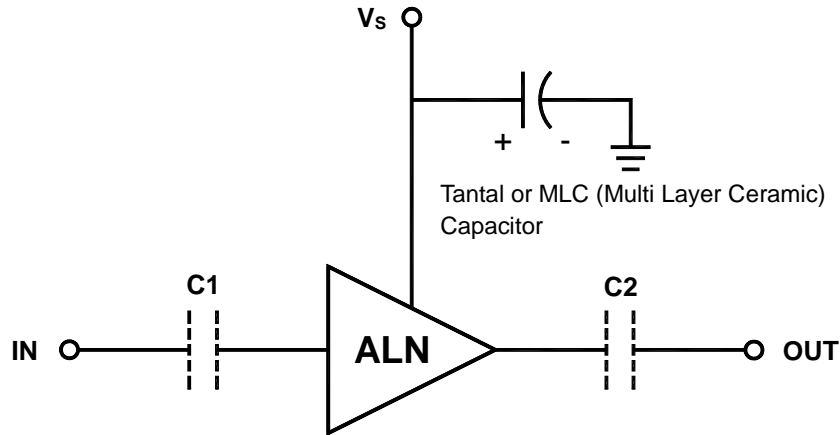
	950 MHz			1100 MHz				1250 MHz		
	S21 (dB)	S11 (dB)	S22 (dB)	S21 (dB)	G/F (dB)	S11 (dB)	S22 (dB)	S21 (dB)	S11 (dB)	S22 (dB)
-55 °C	27.03	-16.30	-16.25	26.03	2.16	-10.63	-18.56	24.84	-13.65	-19.40
-50 °C	27.63	-17.80	-16.40	26.63	2.08	-16.33	-18.69	25.55	-17.50	-18.80
-45 °C	28.21	-19.37	-16.55	27.26	2.00	-22.05	-18.56	26.21	-21.42	-18.20
-10 °C	27.97	-20.74	-16.89	27.01	2.01	-22.08	-18.47	25.96	-20.79	-17.90
25 °C	27.61	-21.61	-17.08	26.63	2.01	-21.92	-18.11	25.60	-20.58	-17.42
60 °C	27.43	-21.70	-17.10	26.45	2.03	-21.19	-17.74	25.40	-19.88	-16.71
85 °C	27.17	-22.09	-17.20	26.18	2.04	-20.84	-17.57	25.13	-19.41	-16.42

2. OIP3, P1dB & NF

	950 MHz			1100 MHz			1250 MHz		
	OIP3 (dBm)	P1dB (dBm)	NF (dB)	OIP3 (dBm)	P1dB (dBm)	NF (dB)	OIP3 (dBm)	P1dB (dBm)	NF (dB)
-55 °C	33.37	19.27	0.362	33.03	18.97	0.378	32.17	18.25	0.432
-50 °C	33.27	19.26	0.365	33.02	18.96	0.396	32.22	18.21	0.460
-45 °C	33.17	19.25	0.368	33.02	18.95	0.418	32.27	18.16	0.494
-10 °C	33.03	19.32	0.504	32.85	19.01	0.544	32.15	18.29	0.628
25 °C	33.03	19.25	0.619	32.68	19.06	0.652	31.94	18.25	0.730
60 °C	32.84	19.23	0.772	32.54	19.00	0.825	31.75	18.24	0.927
85 °C	32.75	19.20	0.931	32.39	18.98	0.985	31.57	18.22	1.092

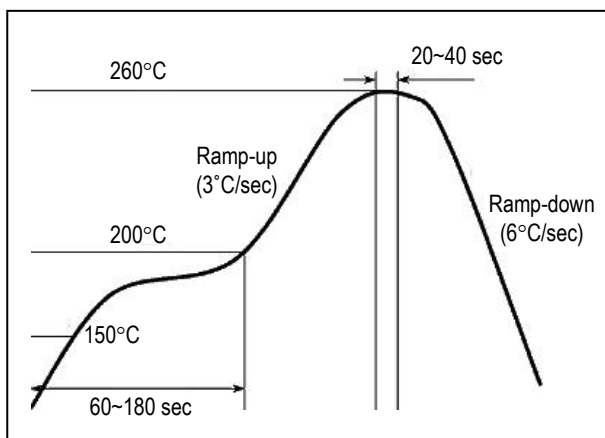
Note: tested at $V_s = 5V$.

Application Circuit



- 1) The tantalum or MLC (Multi Layer Ceramic) capacitor is optional and is used for bypassing the AC noise introduced from the DC supply. The capacitance value may be determined by the customer's DC supply status. The capacitor should be placed as close as possible to the V_s pin and be connected directly to the ground plane for the best electrical performance.
- 2) DC blocking capacitors are always necessarily placed at the input and output ports to allow only the RF signal to pass and block the DC component in the signal. The DC blocking capacitors are included inside the ALN module. Therefore, C1 & C2 capacitors may not be necessary, but can be added just in case that the customer wants. The value of C1 & C2 is determined by considering the application frequency.

Recommended Soldering Reflow Process



Evaluation Board Layout

