

# New Jersey Semi-Conductor Products, Inc.

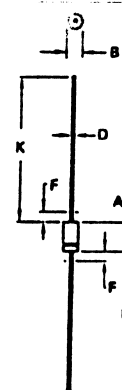
20 STERN AVE.  
 SPRINGFIELD, NEW JERSEY 07081  
 U.S.A.

TELEPHONE: (973) 376-2922  
 (212) 227-6005  
 FAX: (973) 376-8960

## PARAMETERS

1N4175B  
 REF/REG DIODE, P(D) = 1W

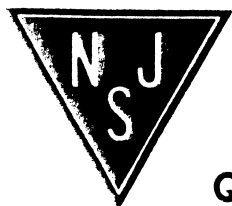
Description: Ref/Reg Diode, P(D) = 1W  
 Manufacturer..... many  
 Mil/High-Rel? (Y/N).....  
 Nom. Ref. Volt..... 36  
 Test Current..... 7.0m  
 Tol. (%)..... 5  
 PD Max. (W)..... 1.0%  
 Dyn. Zmax (j)..... 50  
 Temp Coef pp/10k.....  
 Oper. Temp (x°C) Max..... 200  
 Pkg Style..... DO-41  
 Surface Mounted (Y/N)..... N



DIM	MILLIMETERS		INCHES	
	MIN	MAX	MIN	MAX
A	4.07	5.20	0.160	0.205
B	2.04	2.71	0.080	0.107
D	0.71	0.86	0.028	0.034
F	-	1.27	-	0.050
K	27.94	-	1.100	-

### DO-41

- NOTES:
1. ALL RULES AND NOTES ASSOCIATED WITH JEDEC DO-41 OUTLINE SHALL APPLY.
  2. POLARITY DENOTED BY CATHODE BAND.
  3. LEAD DIAMETER NOT CONTROLLED WITHIN "F" DIMENSION.



Quality Semi-Conductors