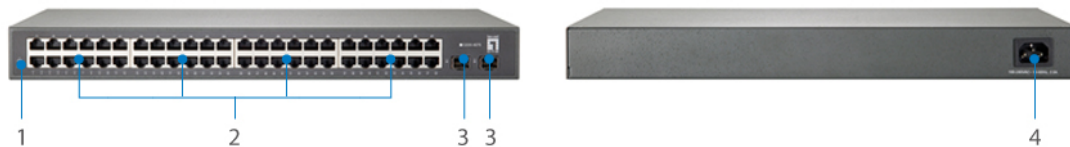




48 GE + 2 GE SFP Web Smart Switch

The LevelOne GSW-4876 is an intelligent 50 ports Gigabit Web Smart Switch, provides 48 x 1000Base-T ports and 2 x Gigabit SFP (Small Form Factor Pluggable) slots. The switch supports a flexible web-based management interface, SNMP for both IPv4 and IPv6 as well as layer 2 management features. Despite its affordable pricing, the GSW-4876 is equipped with many advanced features such as Internet Group Management Protocol (IGMP) snooping v1/v2/v3 forwarding, VLANs, Spanning Tree, Link Aggregation Control Protocol (LACP), QoS with 8 priority queues, UPnP for auto-discovery and configure devices, Storm Control for protects against broadcast/multicast/unknown unicast and else more. The GSW-4876 offers a complete web management solution for small-to-median businesses.



1. LED Indicators
2. 10/100/1000Mbps Ports
3. SFP Slot
4. Internal Power Socket

Key Features

- 48 Gigabit Ethernet ports and 2 Gigabit SFP slots
- MLD, Telnet, SNMP V1, V2c & V3, RMON, Web Browser, and TFTP Management
- IP Multicast Filtering through IGMP Snooping V1 / V2 / V3
- Supports port-based VLAN, IEEE 802.1Q 4K VLAN Tagging
- IEEE 802.1d/w/s Spanning Tree Protocol (MSTP) and port mirroring
- Supports Access Control List (ACL) authentication of up to 512 entries and port-level security with IEEE802.1X
- Supports IPv4/IPv6 network operation
- IEEE 802.1p QoS with 8 priority queues
- IEEE 802.3ad LACP for auto port aggregation
- Supports Universal Plug and Play (UPnP) for auto-configure network devices
- Supports Simple Network Time Protocol (SNTP) time server
- 10K jumbo frames to increase data transfer rates



Highlight

Cost-effective Solutions for IPv6 Deployment

Featuring the most comprehensive set of IPv6 migration technologies, including stateless auto configuration which simplifies IP address assignment by creating a plug-and-play environment in the absence of a DHCP server and the implementation of dual IP stack that allows not only for running both IPv4 and IPv6 applications in parallel but also for facilitating gradual transition between these applications.

Related Product



GVT-0302

1.25G SMF SFP Transceiver, 80 km, 1550nm

Specifications

System Specifications

Memory:

16MB

Buffer Memory (KB):

512KB

Connectors and Cabling:

48 x RJ-45 10/100/1000BASE-T ports

2 x 100/1000Base-X SFP Slots (shared)

Indicator:

Power, Link/Port Activity

Transmission Method:

Store-and-Forward

Power:

Power consumption: 50 Watts for System Power

Voltage: 100 ~ 240 VAC, 50-60 Hz, 2.0A

Standards & Protocols:

IEEE 802.3 10-BASE-T, Ethernet

IEEE 802.3u 100-BASE-TX, Fast Ethernet

IEEE 802.3ab 1000BASE-T, Gigabit Ethernet

IEEE 802.1p Quality of Service (QoS)

IEEE 802.1X Port-based Network Access Control (PNAC)

IEEE 802.1Q Virtual LANs (VLANs)

IEEE 802.1D MAC Bridges

IEEE 802.1d Standard Spanning Tree Protocol (STP)

IEEE 802.1w Rapid Spanning Tree Protocol (RSTP)

IEEE 802.1s Multiple Spanning Tree (MSTP)

IEEE 802.3ad Link Aggregation Control Protocol (LACP)

IEEE 802.1ab Link Layer Discovery Protocol (LLDP)

IEEE 802.3x Flow Control (full-duplex flow control)

Universal Plug and Play (UPnP)

Features

General:

Quality of Service (QoS)

8 hardware queues per port

Traffic classification based on IEEE 802.1p CoS, DSCP,

Supports WRR, Strict scheduling, or hybrid mode

Rate Limiting

- Ingress: Resolution 16 Kbps
- Egress: Resolution 16 Kbps

Spanning Tree Protocol:

- IEEE 802.1D Spanning Tree Protocol (STP)
- IEEE 802.1w Rapid Spanning Tree Protocol (RSTP)
- STP Auto Edge

Auto-negotiation for port speed and duplex mode

Flow Control:

- IEEE 802.3x for full-duplex mode
- Back-Pressure for half-duplex mode

VLANs:

- Supports 4K IEEE 802.1Q VLANs
- Port-based VLANs
- Voice VLAN
- Private VLAN

Link Aggregation:

- Static Trunk
- IEEE 802.3ad Link Aggregation Control Protocol
- Trunk groups: 25 trunk links: Up to 8 ports

IGMP Snooping:

- IGMP v1/v2/v3 snooping
- IGMP immediate leave
- Supports jumbo frames up to 10 KB

Security:

Port Security: Static and dynamic

EAPOL transparent

MAC authentication

Web authentication

DHCP Snooping

Storm Control:

Prevents traffic on a LAN from being disrupted by a broadcast, multicast, or unicast storm on a port

Access Control:

SSH v1/v2 supported; HTTPS/SSL; IEEE 802.1X Radius/Tacacs+ authentication; Dynamic VLAN assignment

ACLs: Support for up to 512 entries

Filtering: Port-/MAC-/IP-based security

Management:

Switch Management:

- Web management
- SNMP v1/v2/v3

Firmware and Configuration: Upgrade via TFTP/HTTP

Supports DHCP Client

Supports LLDP (802.1ab) and LLDP-MED

RMON (groups 1, 2, 3, and 9)

Port mirroring: one to one and many to one

Event log: Local flash, syslog, remote server (RFC3164) and SMTP



(RFC821)
SNTP (IPv4/IPv6)
Loop detection and prevention
UPnP
Cable diagnostics
IPv6 management:
- IPv4/IPv6 dual protocol stack
- IPv6 address types: Unicast/multicast
- IPv6 Ping/tracert
- ICMPv6 and ICMPv6 redirect
- IPv6 neighbor discovery
- IPv6 stateless auto config/manual config
- IPv6 Telnet/SNMP/HTTP/DHCP

Performance

Backplane (Gbps):

100Gbps

MAC Address Table:

8K

Data Transfer Rate:

10/100/1000Mbps

Packet Forwarding Rate:

1000Mbps port - 1,488,000pps

100Mbps port - 148,000pps

10Mbps port - 14,880pps

Environment

Temperature (°C):

Operating: 0 ~ 50°C

Storage: -40 ~ 70°C

Humidity (Non-condensing):

Operating: 10 ~ 90%

Storage: 5 ~ 90%

Physical Specifications

Dimensions (W x D x H mm):

440 x 250 x 44 mm

Weight (g):

2980 g

Others

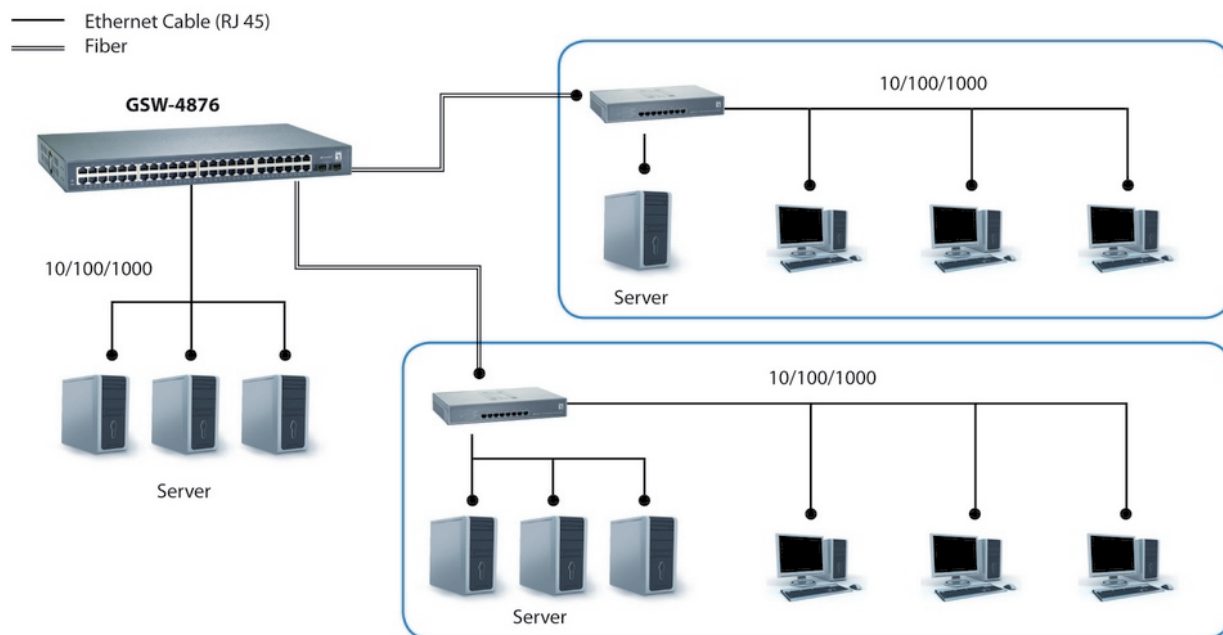
Approval and Compliance:

CE, FCC Part 15 Class A

Deployment:

19-inch rack-mountable

Diagram



Order Information

GSW-4876

Package Contents

Power Cord
19" Rackmount Kit
Rubber Feet
Quick Installation Guide
Resource CD (User Manual)



All mentioned brand names are registered trademarks and property of their owners.
Copyright © Digital Data Communications GmbH, Germany. All Rights Reserved.