

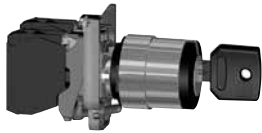
# Harmony™ XB4 metal 22 mm push buttons

Key switches with key no. 455, 421E, 458A, 520E, 3131A


Assembly of other products using body/contact assemblies, see page 48; accessories, see page 62

Key switches (1) (2)						
Screw clamp terminal connections (Schneider Electric anti-retightening system)						
Shape of head	Type of operator	Type of contact		Positions		Reference
		N/O	N/C	Number	Type	

**Complete units**




XB4BG33

Key switch with key no. 455	Type of contact	Positions	Type	Reference	Weight	
	1	-	2-position 90°	Stay put	<b>XB4BG21</b> (ZB4BZ101 + ZB4BG2)	0.153
					<b>XB4BG41</b> (ZB4BZ101 + ZB4BG4)	0.153
	2	-	3-position ± 45°	Spring return to left	<b>XB4BG61</b> (ZB4BZ101 + ZB4BG6)	0.153
				Stay put	<b>XB4BG03</b> (ZB4BZ103 + ZB4BG0)	0.153
				<b>XB4BG33</b> (ZB4BZ103 + ZB4BG3)	0.153	

**Heads only**



ZB4BG0

Key switch with key no. 455 (3) (4)	Positions	Type	Reference	Weight	
	2-position 90°	Stay put	<b>ZB4BG2</b>	0.098	
			<b>ZB4BG02</b>	0.098	
			<b>ZB4BG4</b>	0.098	
			Spring return from right to left	<b>ZB4BG6</b>	0.098
			3-position ± 45°	Stay put	<b>ZB4BG0</b>
	<b>ZB4BG03</b>	0.098			
	<b>ZB4BG04</b>	0.098			
	<b>ZB4BG3</b>	0.098			
	<b>ZB4BG5</b>	0.098			
		Spring return from left to center		<b>ZB4BG1</b>	0.098
<b>ZB4BG01</b>				0.098	
Spring return to center			<b>ZB4BG7</b>	0.098	
			<b>ZB4BG8</b>	0.098	
Spring return from right to center			<b>ZB4BG05</b>	0.098	
			<b>ZB4BG08</b>	0.098	

**Heads with black metal bezel**

To order, add a figure 7 to the references selected from above. Example: **ZB4BG2** becomes **ZB4BG27**.

(1) Recommended maximum number of contacts and sequence of contacts constituting the body (mounting collar + contact) associated with the head, see page 24.

(2) The symbol  indicates key withdrawal position(s).

(3) Other key numbers:

- key no. 421E: add suffix 12 to the reference.
- key no. 458A: add suffix 10 to the reference.
- key no. 520E: add suffix 14 to the reference.
- key no. 3131A: add suffix 20 to the reference.

Example: For a switch head with key no. 421E, 2-position stay put, with key withdrawal from the left-hand position, the reference becomes: **ZB4BG212**.

(4) For specific keys with other numbers, please consult your Regional Sales Office.

Note: For contact block and mounting collar ordering information, see pages 48, 50, 51 and 52.