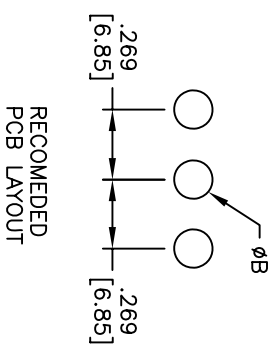
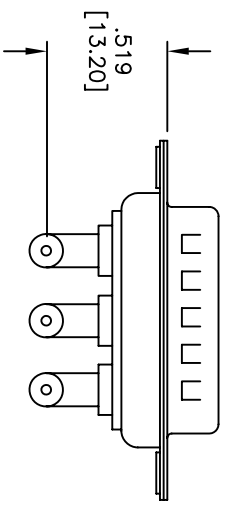
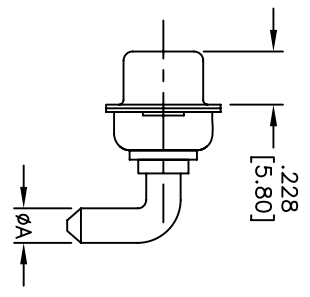
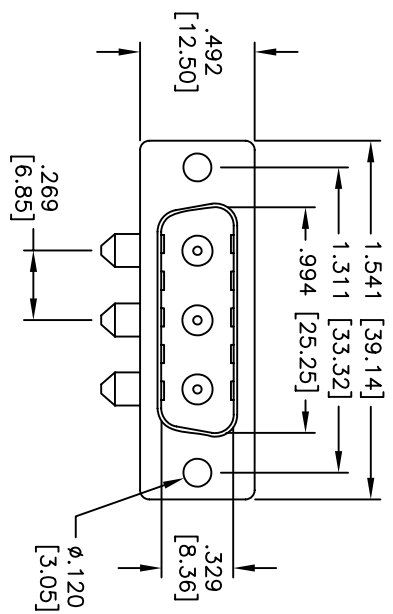


Rev	AWO #	Description	Date	Appr
-		RELEASED	6/19/06	

APPROVED: _____
 DATE: _____ TITLE: _____



PART NO.	CURRENT RATING	DIMENSION	
		φA	φB
D3W3-SLP-10-1	10 AMPS	φ.067 [1.70]	φ.086 [2.20]
D3W3-SLP-20-1	20 AMPS	φ.110 [2.80]	φ.129 [3.28]
D3W3-SLP-40-1	40 AMPS	φ.147 [3.75]	φ.165 [4.20]

SPECIFICATIONS:
 Material: Insulator: PBT, glass reinforced, rated UL 94V-0
 Insulator color: Black
 Contacts: Brass
 Shell: Steel, Tin plated
 Hardware: Brass, Nickel plated
 Plating: Gold flash over Nickel underplate overall
 Electrical:
 Operating voltage: 250 VAC max
 Current rating: 10, 20 or 40 Amps max. (See Chart)
 Contact resistance: 2.7 mohms max
 Insulation resistance: 5,000 Mohms min
 Dielectric withstanding voltage: 1,000 VAC for 1 minute
 Temperature Rating: Operating temperature: -55°C to +280°C
 Environmental: Lead free, RoHS compliant
 Recommended soldering temp: 235°C for 5 seconds



ADAM TECH

909 Rahway Avenue, Union, NJ 07083
 Phone: 908-687-5000 Fax: 908-687-5710

TITLE: D-SUB, MALE POWER, D3W3, RIGHT
 ANGLE, PCB 10A, 20A OR 40A

UNLESS OTHERWISE SPECIFIED ALL DIMENSIONS ARE INCHES [MM]	
TOLERANCES: EXCEPT AS NOTED	INCHES
.X ±.10	ØX ±.10
.XX ±.020	ØXX ±.015
.XXX ±.015	ØXXX ±.010
APPROVALS	
DRAWN	SS
CHECKED	
APPROVED	

SIZE	PART NO.	REV.
X	D3W3-PLP-XX-1	-
REF:	SCALE: NTS	SHEET 1 OF 1