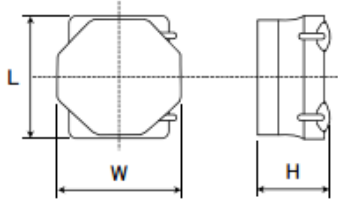


Metal Core SMD Power Inductors (MCOIL(TM) MD series)

MDJE4040T1R0MM



■ Features

- Item Summary  
1.0 μH(±20%), 4700mA, 3000mA
- Lifecycle Stage  
Mass Production
- Standard packaging quantity (minimum)  
Taping 1000pcs

■ Products characteristics table

CaseSize (EIA/JIS)	-/4040
Inductance	1.0 μH(±20%)
Inductance Measuring Frequency	1MHz
Rated Current -Saturation Current	4700mA
Rated Current -Temperature Rise Current	3000mA
DC Resistance (max)	0.069Ω
Avg. of DC Resistance	0.06 Ω
RoHS Compliance	Yes
Halogen Free	Yes
Soldering Method	Reflow

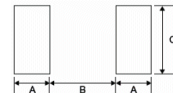
■ External Dimensions

L	4mm ±0.2
W	4mm ±0.2
H	0.95mm max

■ Recommended Land Patterns

【推奨ランドパターン】  
実装上の注意  
・実装仕様を確認の上ご使用ください。また、本製品ははんだ付はリフローはんだ工法にのみ対応します。

【Recommended Land Pattern】  
Surface Mounting  
\*Mounting and soldering conditions should be checked beforehand.  
\*Applicable soldering process to these products is reflow soldering only.



Metal Core SMD Power Inductors (MCOIL™, MD series)

Type	A	B	C
1616	0.50	0.60	1.65
2020	0.65	0.70	2.00
3030	0.80	1.40	2.70
4040	1.20	1.60	3.70
5050	1.50	2.10	4.00

unit:mm

The data is reference only. Electrical characteristics vary depending on environment or measurement condition. TAIYO YUDEN reserves the right to make change to the Date at any time without notice. Before making final selection, please check product specification.