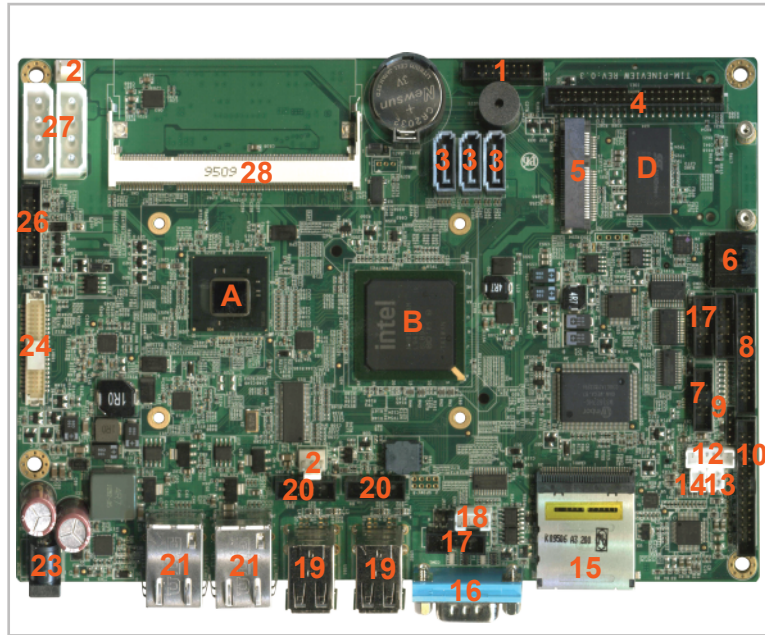


# TIM-5510

## Embedded Mainboard



Intel Atom D510 embedded board with SO-DIMM DDR2 and 12 VDC power input.

Various storage possibilities ranging from CF card, IDE, SATA to onboard NAND Flash.

Integrated multireader that reads SD, XD, MMC, MS and all their variants.

Four serial ports, 8 GPIO's and 8 USB to connect and control external devices.



### System

CPU	Fanless Intel Atom D510 dualcore @ 1.66 GHz (A)
Memory	1x DDR2 SO-DIMM Max. 2GB(28)
Chipset	ICH8M (B)
Graphic interfaces	VGA by pinheader (26) single channel LVDS upto 18bit(24)
Touchpanel	5 wire resistive touchcontroller (6)
Audio Chipset	Realtek ALC888 7.1 audio, S/PDIF, microphone(10) 2 W amplified speaker L/R(13,14)
BIOS	Insyde BIOS
Supported OS	Linux 2.6.x, Windows XP/Vista/7

### Communication Interfaces

By connector	DC-in (23), Marvell Gigabit RJ-45 (2x)(21), USB 2.0 (4x)(19), RS-232 (16), multireader (15)
By pinheader	LPT (8), digital IO (8x)(7), USB 2.0 (4x)(20), RS-232 (2x)(17), RS-232/422/485(switch select)(18)

### Expansion and Storage

Multi Cardreader	SD, MMC, XD, MS cards (15)
Expansion slots	mini-PCIe (5)
On board	3x SATA(3), IDE 44 pin interface(4)

### Power

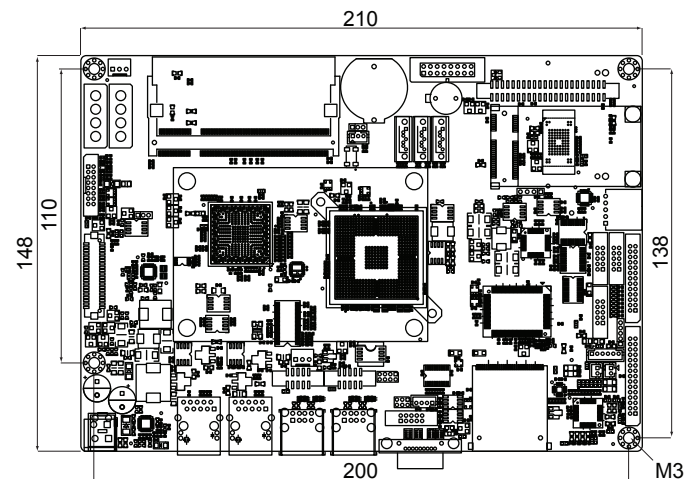
Input power	12VDC or wide voltage(8~30VDC)
-------------	--------------------------------

### Environmental and Mechanical

Temperature	0° to 60° C
Humidity	10-90%
Dimensions	210 x 148 mm (DIN A5)
Weight	550 grams

### Dimensions

units in mm



### Order Information

TIM-5510-SV	standard voltage (12VDC)
TIM-5510-WV	wide voltage (8~30VDC)

### Options

On board storage	1GB NAND Flash (D)
Expansion slots	CF card slot/ mini-PCI (bottom)
Input power	wide voltage (8~30VDC)

# TechNexion

Phone: +886-2-8227-3585  
E-mail: sales@technexion.com  
Web: http://www.technexion.com

