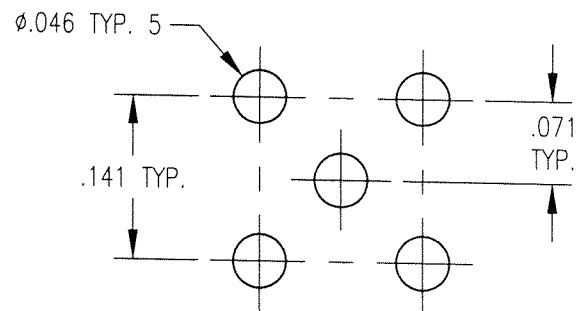
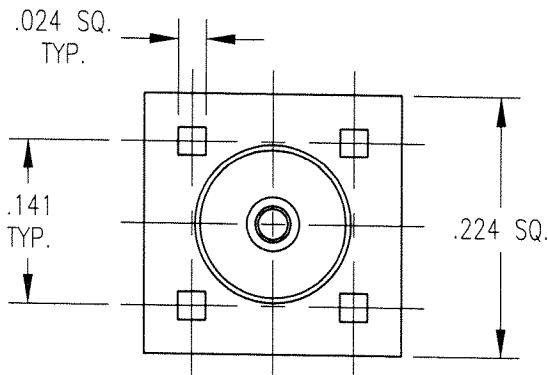
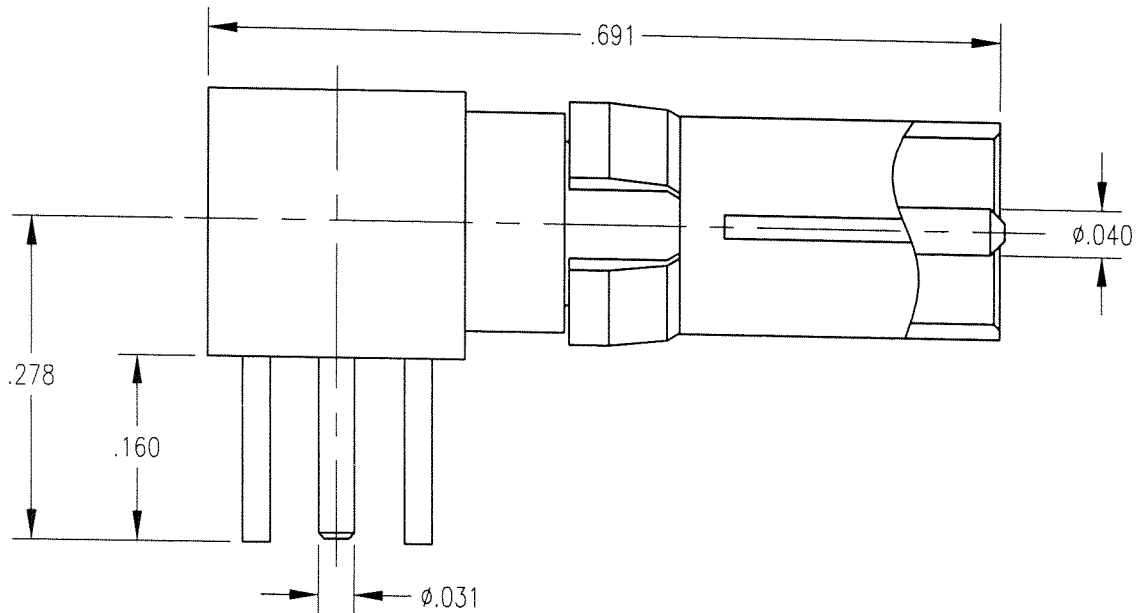


DWG. NO. 403-010-6042G			
REV	DESCRIPTION	BY DATE	APPRO
A	RELEASE PER NPR 2401A	10/81/5 HW	<i>[Signature]</i>



MOUNTING HOLES

NOTES:

- MATERIALS:
 REAR BODY AND CONTACT: BRASS PER ASTM B16
 FRONT BODY: BERYLLIUM COPPER PER ASTM B196
 CLIP RING: BERYLLIUM COPPER PER ASTM B194
 INSULATOR: TEFLON PER ASTM D1710
- FINISH:
 BODIES AND CONTACT: .000030 MIN. GOLD PER MIL-G-45204
 OVER .000050 MIN. NICKEL PER QQ-N-290
 CLIP RING: .000100 MIN. NICKEL PER QQ-N-290
 OVER COPPER FLASH
- FOR USE IN DIN 41612 HOUSING.

PER ASME Y14.5M-1994 UNLESS OTHERWISE SPECIFIED: DIMENSIONS ARE IN INCHES (MM)				Litton	
TOLERANCES: DECIMALS xx ± .01/0.254 xxx ± .005/0.127 ANGLES ± 2°				Winchester/Retconn 400 Park Road Watertown, Connecticut 06795	
CUSTOMER DRAWING		SCALE: 6:1		TITLE	
DRAWN JWH		CHECKED MJF		40 SERIES R/A RECEPTACLE	
DATE 5/17/01		DATE 5/17/01			
APPROVED JEM		APPROVED KJT		A 403-010-6042G	
DATE 5/17/01		DATE 5/17/01		SHT 1 OF 1 REV. A	