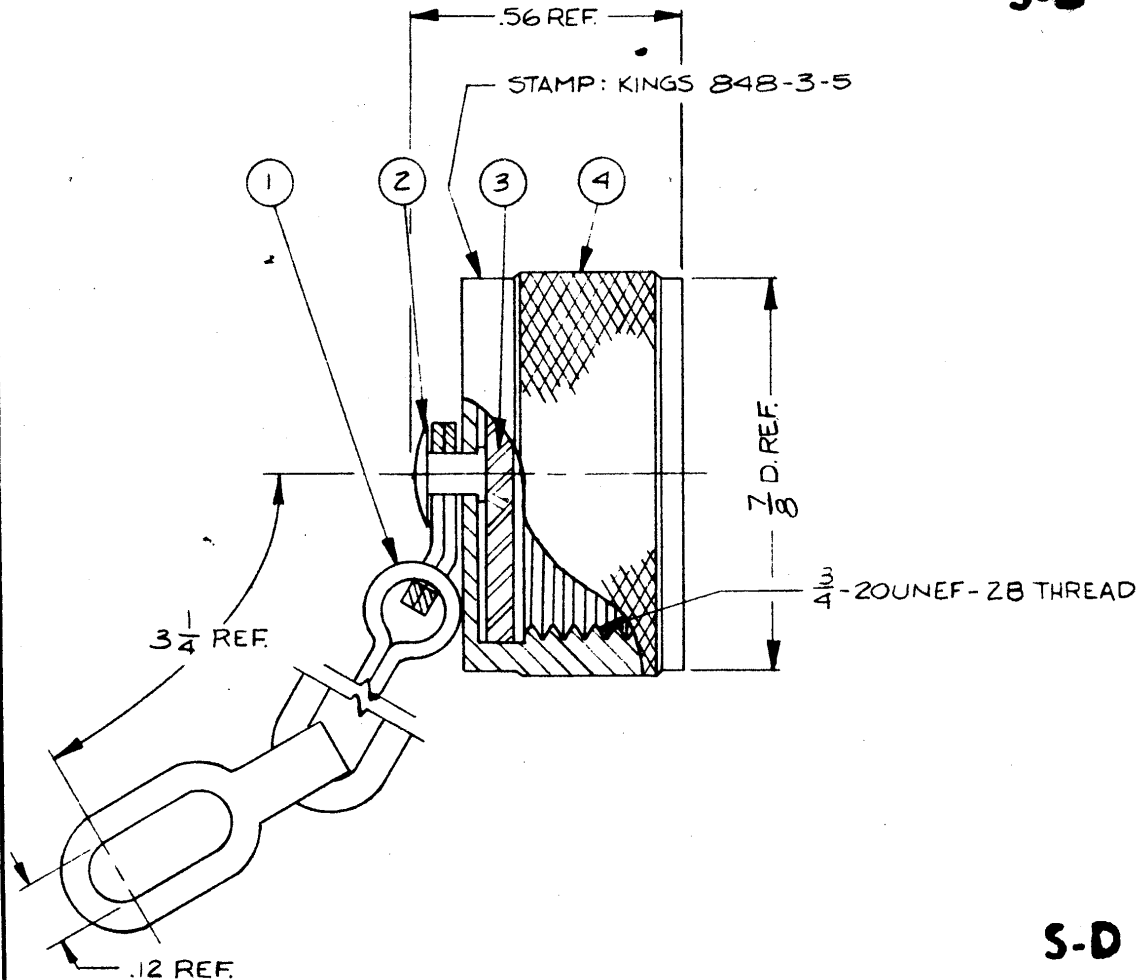


DASH NO. M CODE MADE FROM

S-D



S-D

848-3-5

REVISIONS

ISSUE	CHANGES
0	ER 29995 JCA 26 JUL 88

S-D

SCALE 3:1	
APPROX SURFACE AREA	
USED ON	
REF	
WAS: E-8306	
"HN" CAP & CHAIN ASSEMBLY	
DRAWN JCA	DATE 26 JUL 88
APPR [Signature]	DATE 29 JUL 88
APPR [Signature]	DATE

UNLESS OTHERWISE SPECIFIED:

- | | |
|--|---|
| 1 TOLERANCES FRACTIONS & 2 PLACE DECIMALS ± .010 | 2 REMOVE ALL BURRS, BREAK SHARP EDGES .005 MAX. |
| 3 PLACE DECIMALS ± .004 | 3 NO FILLETS PERMITTED. |
| ANGLES ± 0°30' | 4 SURFACE ROUGHNESS 63 MICROINCHES RMS MAX. |
| T I R CONCENTRICITY OF ANY 2 DIAMETERS MAY NOT EXCEED HALF THE SUM OF THEIR TOLERANCES | 5 ALL DIMENSIONS PRIOR TO PLATING. |
| | 6 ALL PLATING IN ACCORDANCE WITH KER 10004. |

KINGS
ELECTRONICS CO. INC.
TUCKAHOE, NEW YORK 10701

848-3-5

(SHEET 1 OF 2)