

Customer Information Sheet

DRAWING No.: S1721-XX

SHEET 2 OF 2

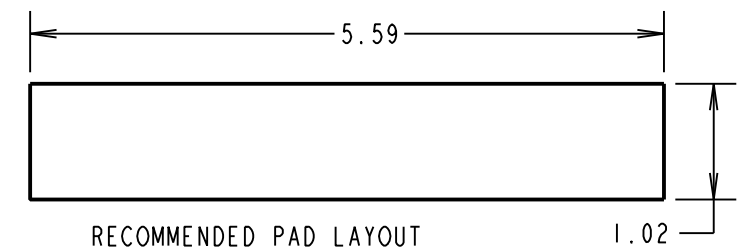
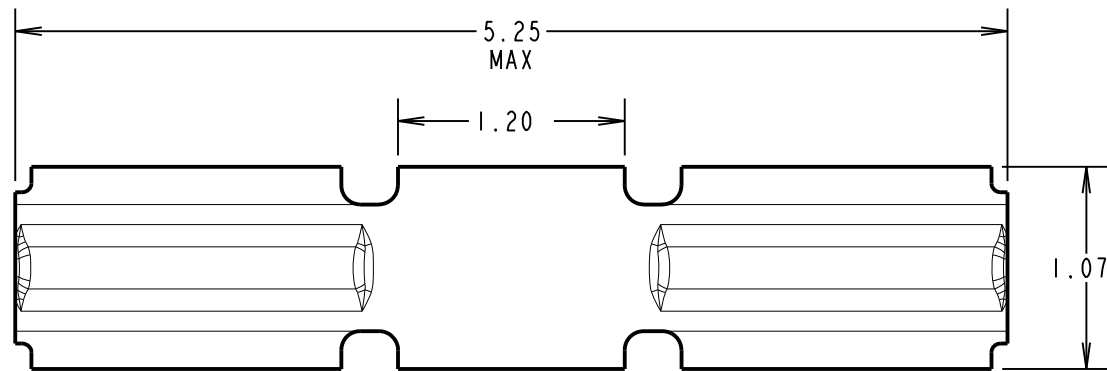
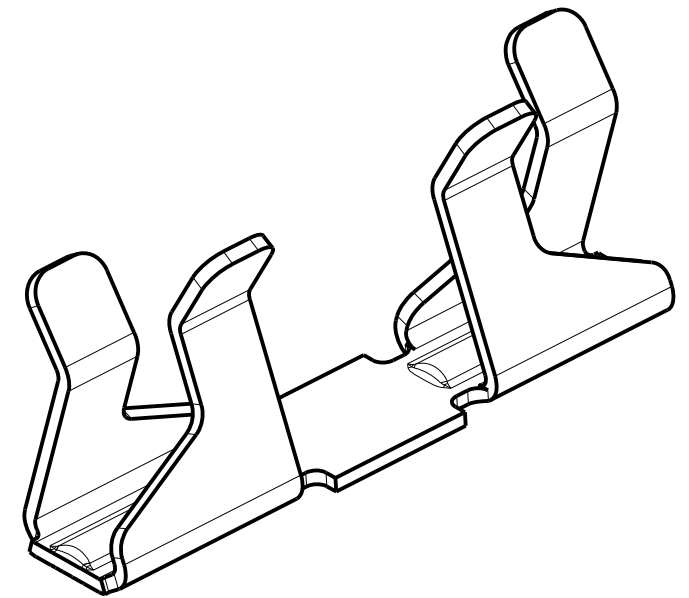
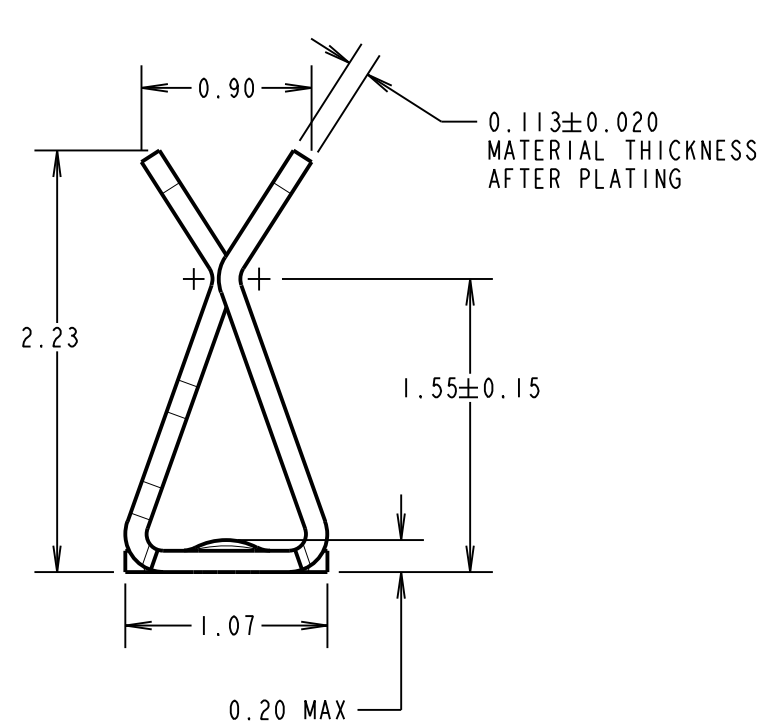
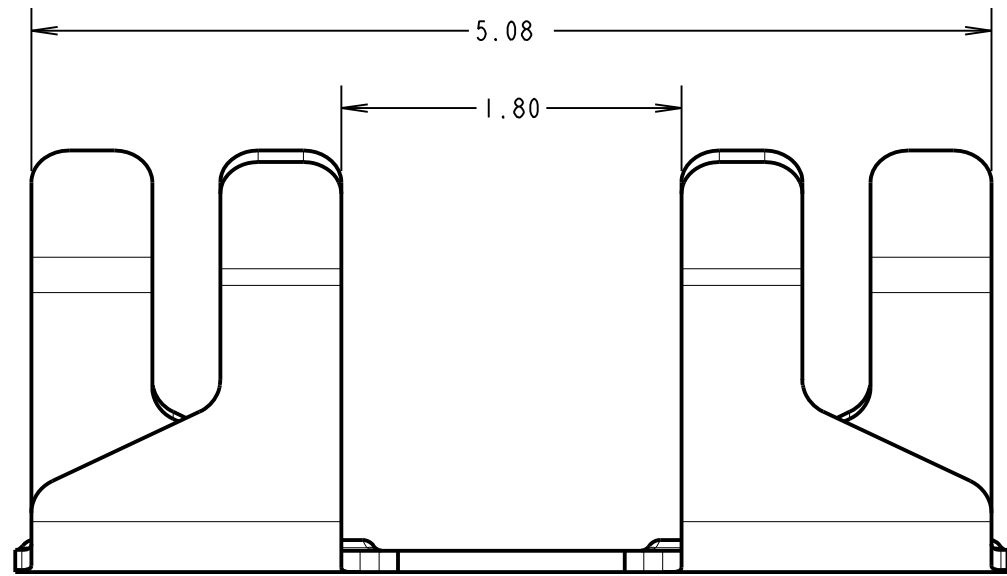
IF IN DOUBT - ASK

©

NOT TO SCALE

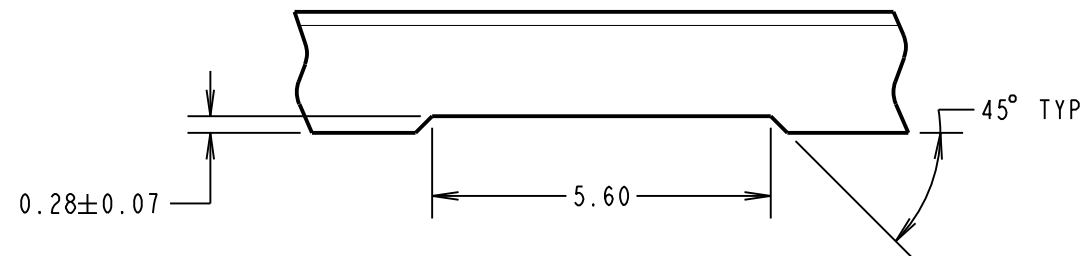
THIRD ANGLE PROJECTION

ALL DIMENSIONS IN mm



RECOMMENDED PAD LAYOUT

RECOMMENDED SHIELD CAN CUT OUT



COMPONENT SPECIFICATION:

MATERIAL = BERYLLIUM COPPER
 FINISH = '06' = 3μ 90/10 TIN/LEAD
 '46' = 3μ 100% TIN,
 OVER 2.0μ NICKEL
 SHIELD THICKNESS = 0.13-0.23mm

PERFORMANCE SPECIFICATION:

ENGAGEMENT FORCE = 5N MAX.
 DISENGAGEMENT FORCE = 0.35N MIN.
 DURABILITY = 15 ACTUATIONS MIN.
 CONTACT RESISTANCE = 40mΩ MAX.

NOTES:

- FOR TAPE AND REELED VERSION, SEE DRAWING S1721-06R.
- PACKING:- 100 COMPONENTS PER BAG
 NB: COMPONENTS SUPPLIED IN TAPE POCKETS TO AVOID DAMAGE DURING STORAGE AND TRANSIT.

PART No.	FINISH:
S1721-06	90/10 TIN/LEAD
S1721-46	100% TIN

SF	ISS.	DATE	C/NOTE
5		27.06.13	12129
APPROVED:		S.FLOWER	
CHECKED:		M.PLESTED	
DRAWN:		J. ENRIGHT	
CUSTOMER REF.:			
ASSEMBLY DRG:			

HARWIN

www.harwin.com
 technical@harwin.com

THIS DRAWING AND ANY INFORMATION OR DESCRIPTIVE MATTER SET OUT HEREON ARE CONFIDENTIAL AND COPYRIGHT PROPERTY OF THE HARWIN GROUP AND MUST NOT BE DISCLOSED, LOANED, COPIED OR USED FOR MANUFACTURING, TENDERING OR FOR ANY OTHER PURPOSE WITHOUT THEIR WRITTEN PERMISSION.

TOLERANCES
 X. = ±1mm
 X.X = ±0.25mm
 X.XX = ±0.10mm
 X.XXX = ±0.01mm
 ANGLES = ±5°
 UNLESS STATED

MATERIAL:
 SEE ABOVE
FINISH: SEE ABOVE
S/AREA: mm²

TITLE:
 MINI SMT RFI SHIELD CLIP (LOOSE)

DRAWING NUMBER:
 S1721-XX

SHT 2 OF 2