

| Rev | AWO # | Description | Date | Appr |
|-----|-------|-------------|---------|------|
| - | | RELEASED | 1/24/11 | |

6

5

4

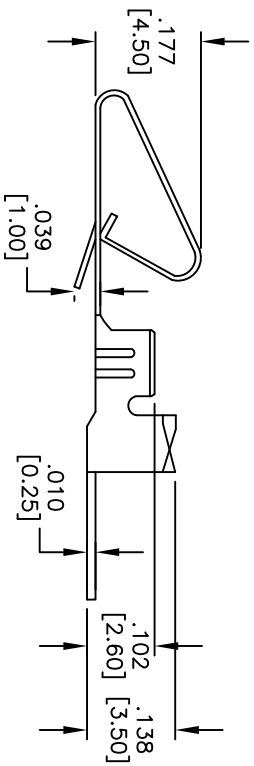
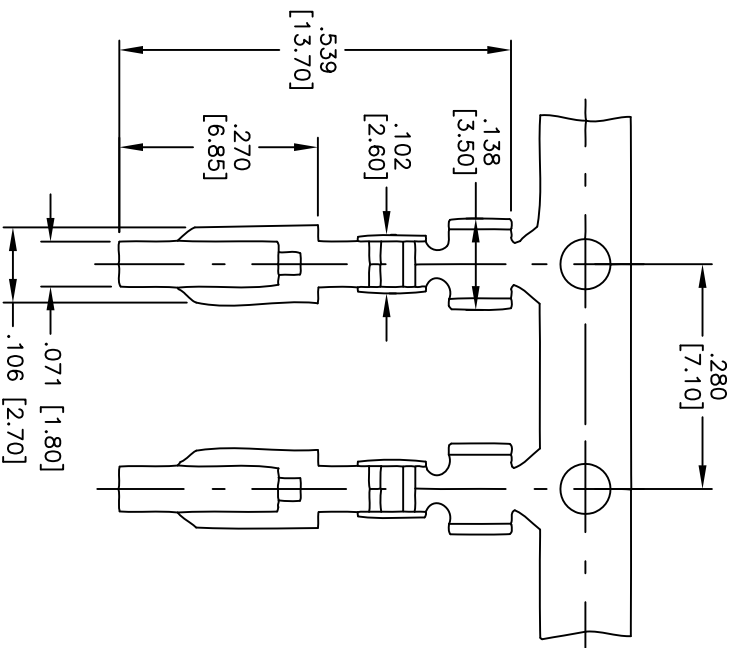
3

2

1

APPROVED: _____

DATE: _____ TITLE: _____



SPECIFICATIONS:

- Material: Brass
- Contacts: Brass
- Plating: Tin over Copper underplate overall
- Electrical: Rated voltage: AC/250V, DC/350V
- Rated current: AC, DC, 3A
- Insulation O.D.: 1.57Max.
- Wire range(AWG): 18-24
- Temperature Rating: Operating temperature: -25°C to +85°C
- Environmental: Lead free, RoHS compliant.



ADAM TECH

909 Railway Avenue, Union, NJ 07083
 Phone: 908-687-5000 Fax: 908-687-5710

TITLE: CRIMP CONTACT, MTF SERIES
 TIN PLATED, ON REELS

| | | | |
|--|------------|-----------------------------|---------------------|
| UNLESS OTHERWISE SPECIFIED ALL DIMENSIONS ARE INCHES [MM] | | TOLERANCES: EXCEPT AS NOTED | |
| INCHES | | HOLDS | |
| .X | ± .10 | Ø.X | ± .10 |
| .XX | ± .020 | Ø.XX | ± .015 |
| .XXX | ± .015 | Ø.XXX | ± .010 |
| APPROVALS | DATE | DATE | |
| DRAWN | DY | 1/24/11 | |
| CHECKED | | | |
| APPROVED | | | |
| REF: S00099T | SCALE: NTS | SIZE: X | PART NO.: MTF-B-C-R |
| SHEET 1 OF 1 | | | REV: - |

6

5

4

3

2

1