

## TURBOSWITCH™ "B". ULTRA-FAST HIGH VOLTAGE DIODE

### MAIN PRODUCTS CHARACTERISTICS

$I_{F(AV)}$	<b>30A</b>
$V_{RRM}$	<b>600V</b>
$t_{rr}$ (typ)	<b>60ns</b>
$V_F$ (max)	<b>1.3V</b>

### FEATURES AND BENEFITS

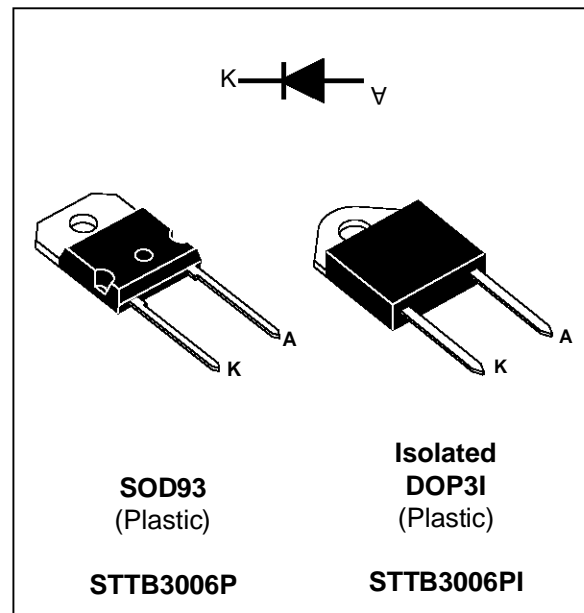
- SPECIFIC TO THE FOLLOWING OPERATIONS: Snubbing or clamping, demagnetization and rectification.
- ULTRA-FAST, SOFT AND NOISE-FREE RECOVERY.
- VERY LOW OVERALL POWER LOSSES AND PARTICULARLY LOW FORWARD VOLTAGE.
- DESIGNED FOR HIGH PULSED CURRENT OPERATIONS.
- CECC APPROVED.

### DESCRIPTION

The TURBOSWITCH is a very high performance series of ultra-fast high voltage power diodes from 600V to 1200V.

TURBOSWITCH, B family, drastically cuts losses in all high voltage operations which require extremely fast, soft and noise-free power diodes. They are particularly suitable in the primary circuit

### PRELIMINARY DATA



of an SMPS as snubber, clamping or demagnetizing diodes, and also in most power converters as high performance rectifier diodes. Packaged in SOD93 and in isolated DOP3I, these 600V devices are particularly intended for use on 240V domestic mains.

### ABSOLUTE MAXIMUM RATINGS

Symbol	Parameter	Value	Unit
$V_{RRM}$	Repetitive peak reverse voltage	600	V
$V_{RSM}$	Non repetitive peak reverse voltage	600	V
$I_{F(RMS)}$	RMS forward current	50	A
$I_{FRM}$	Repetitive peak forward current (tp = 5 $\mu$ s, f = 1kHz)	700	A
$T_j$	Max operating junction temperature	-65 to 150	°C
$T_{stg}$	Storage temperature	-65 to 150	°C

TM : TURBOSWITCH is a trademark of SGS-THOMSON MICROELECTRONICS.

## STTB3006P(I)

### THERMAL AND POWER DATA

Symbol	Parameter	Conditions	Value	Unit
$R_{th(j-c)}$	Junction to case thermal resistance	STTB3006P STTB3006PI	1.2 1.8	°C/W
$P_1$	Conduction power dissipation (see fig. 5)	$I_{F(AV)} = 30A$ $\delta = 0.5$ STTB3006P $T_c = 85^\circ C$ STTB3006PI $T_c = 45^\circ C$	54	W
$P_{max}$	Total power dissipation $P_{max} = P_1 + P_3$ ( $P_3 = 10\% P_1$ )	STTB 3006P $T_c = 78^\circ C$ STTB3006PI $T_c = 42^\circ C$	60	W

### STATIC ELECTRICAL CHARACTERISTICS (see Fig.5)

Symbol	Parameter	Test Conditions	Min	Typ	Max	Unit
$V_F$ *	Forward voltage drop	$I_F = 30A$ $T_j = 25^\circ C$ $T_j = 125^\circ C$			1.4 1.3	V V
$I_R$ **	Reverse leakage current	$V_R = 0.8$ $\times V_{RRM}$ $T_j = 25^\circ C$ $T_j = 125^\circ C$			150 5.0	$\mu A$ mA

Test pulses widths : \*  $t_p = 380 \mu s$ , duty cycle < 2%

\*\*  $t_p = 5 ms$ , duty cycle < 2%

### DYNAMIC ELECTRICAL CHARACTERISTICS

#### TURN-OFF SWITCHING (see Fig.6)

Symbol	Parameter	Test Conditions	Min	Typ	Max	Unit
$t_{rr}$	Reverse recovery time	$T_j = 25^\circ C$ $I_F = 0.5 A$ $I_R = 1A$ $I_{rr} = 0.25A$ $I_F = 1 A$ $di_F/dt = -50A/\mu s$ $V_R = 30V$		60	110	ns
$I_{RM}$	Maximum reverse recovery current	$T_j = 125^\circ C$ $V_R = 400V$ $I_F = 30A$ $di_F/dt = -240 A/\mu s$ $di_F/dt = -500 A/\mu s$		40	45	A
S factor	Softness factor	$T_j = 125^\circ C$ $V_R = 400V$ $I_F = 30A$ $di_F/dt = -500 A/\mu s$		0.5		/

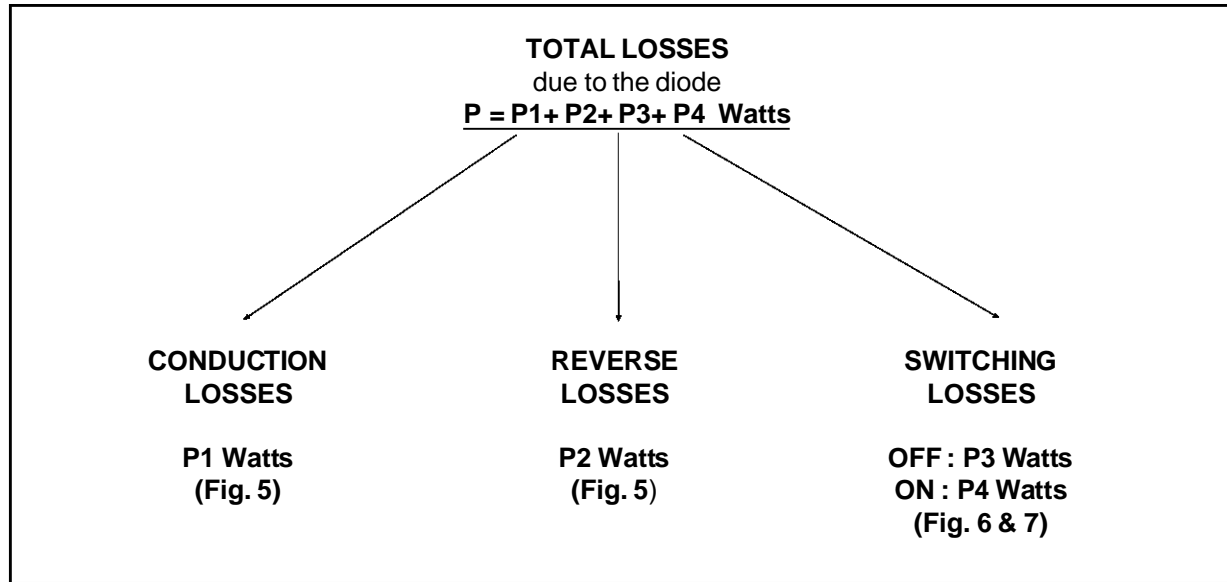
#### TURN-ON SWITCHING (see Fig.7)

Symbol	Parameter	Test Conditions	Min	Typ	Max	Unit
$t_{fr}$	Forward recovery time	$T_j = 25^\circ C$ $I_F = 30 A$ , $di_F/dt = 240 A/\mu s$ measured at, $1.1 \times V_{Fmax}$			500	ns
$V_{Fp}$	Peak forward voltage	$T_j = 25^\circ C$ $I_F = 30A$ , $di_F/dt = 240 A/\mu s$ $I_F = 150A$ , $di_F/dt = 500 A/\mu s$		10	8	V

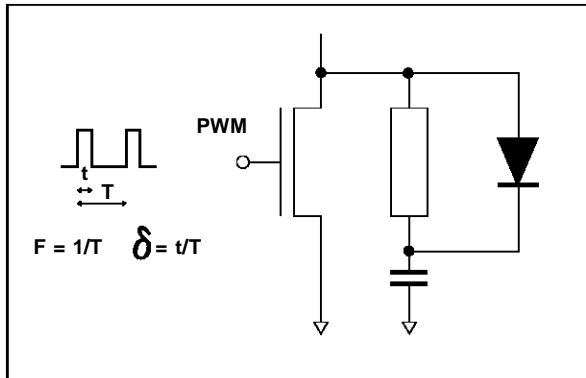
**APPLICATION DATA**

The TURBOSWITCH "B" is especially designed to provide the lowest overall power losses in any application such as snubbing, clamping, demagne-

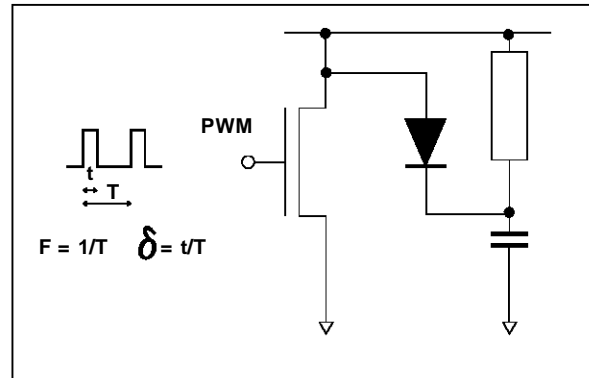
tization and rectification. In such applications (fig.1 to fig.4), the way of calculating the power losses is given below :



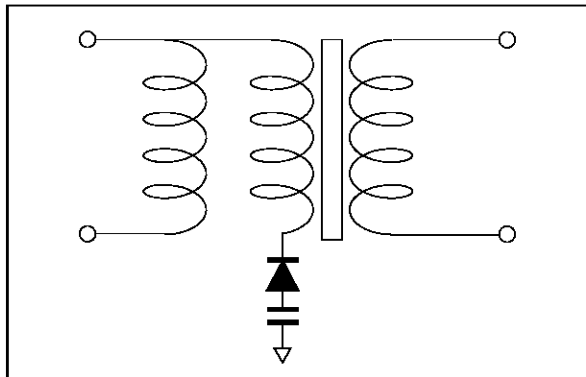
**Fig. 1 : SNUBBER DIODE.**



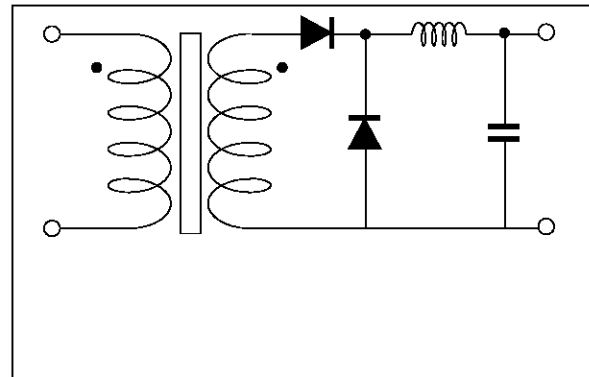
**Fig. 2 : CLAMPING DIODE.**



**Fig. 3 : DEMAGNETIZING DIODE.**

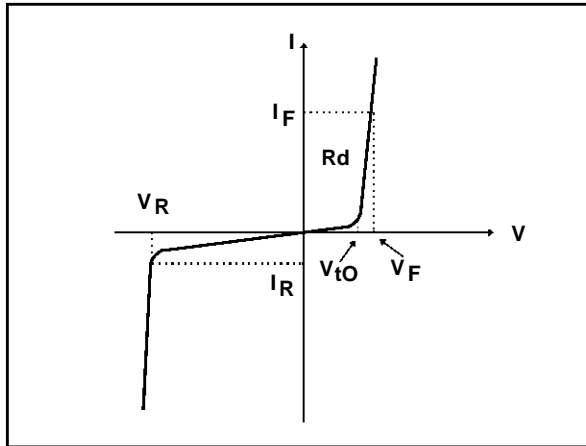


**Fig. 4 : RECTIFIER DIODE.**



APPLICATION DATA (Cont'd)

Fig. 5: STATIC CHARACTERISTICS



Conduction losses :

$$P1 = V_{t0} \cdot I_F(AV) + R_d \cdot I_F^2(RMS)$$

with

$$V_{t0} = 1.00 \text{ V}$$

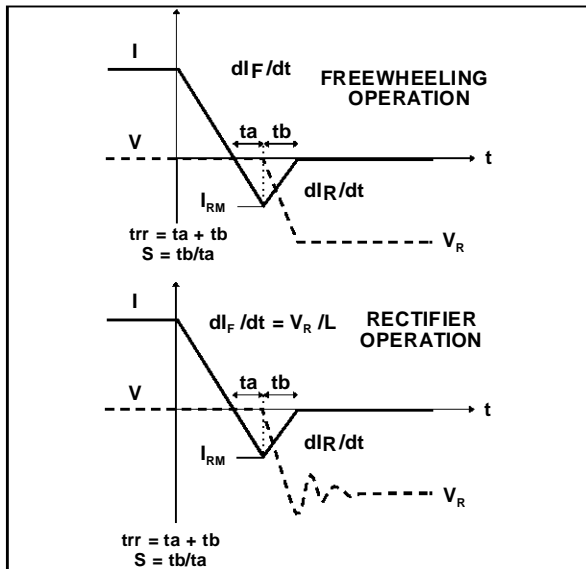
$$R_d = 0.010 \text{ Ohm}$$

(Max values at 125°C)

Reverse losses :

$$P2 = V_R \cdot I_R \cdot (1 - \delta)$$

Fig. 6: TURN-OFF CHARACTERISTICS



Turn-off losses :

$$P3 = \frac{V_R \times I_{RM}^2 \times S \times F}{6 \times di_F/dt}$$

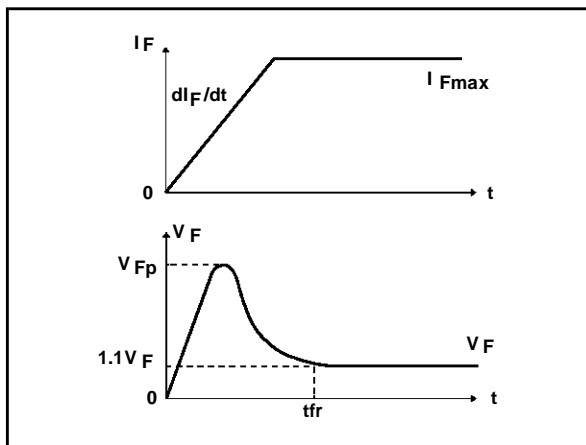
Turn-off losses :

(with non negligible serial inductance)

$$P3' = \frac{V_R \times I_{RM}^2 \times S \times F}{6 \times di_F/dt} + \frac{L \times I_{RM}^2 \times F}{2}$$

P3 and P3' are suitable for power MOSFET and IGBT

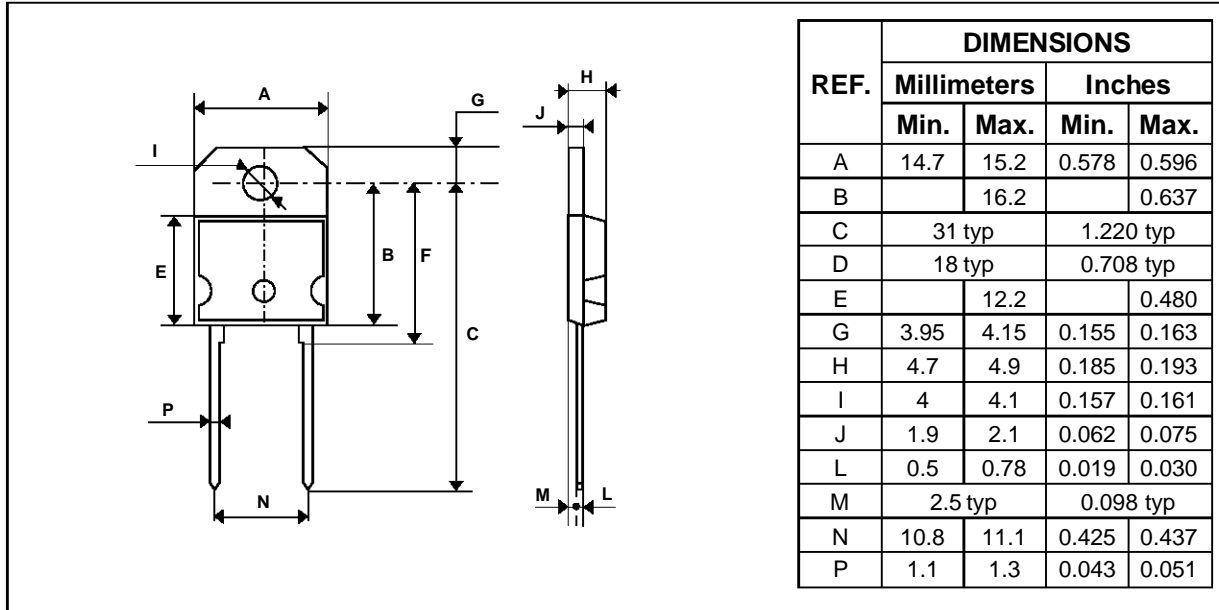
Fig. 7: TURN-ON CHARACTERISTICS



Turn-on losses :

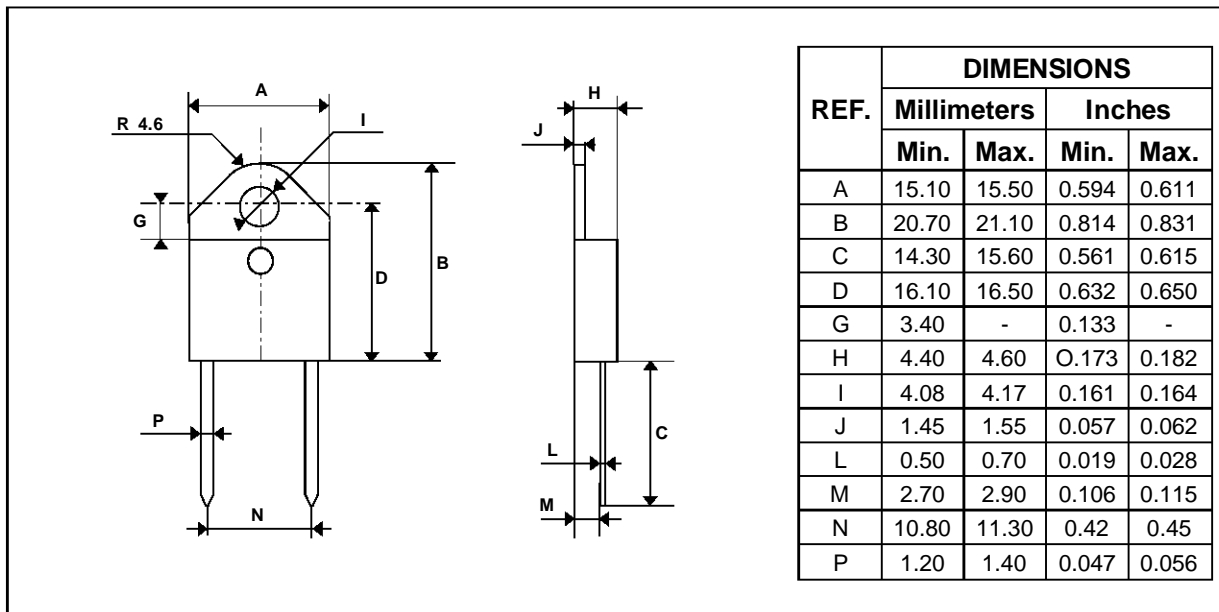
$$P4 = 0.4 (V_{FP} - V_F) \cdot I_{Fmax} \cdot t_{fr} \cdot F$$

**PACKAGE DATA**  
SOD93 Plastic



Cooling method : C.  
 Marking : Type number.  
 Weight : 5.2 g.  
 Recommended torque value : 0.8m.N.  
 Maximum torque value : 1.0 m.N.

**PACKAGE DATA**  
DOP3I ISOLATED Plastic



Cooling method : C.  
 Marking : Type number.  
 Weight : 4.6 g.  
 Recommended torque value : 0.8 m.N.  
 Maximum torque value : 1.0 m.N.

Electrical isolation : 2500VRMS  
 Capacitance : 12 pF

Information furnished is believed to be accurate and reliable. However, SGS-THOMSON Microelectronics assumes no responsibility for the consequences of use of such information nor for any infringement of patents or other rights of third parties which may result from its use. No license is granted by implication or otherwise under any patent or patent rights of SGS-THOMSON Microelectronics. Specifications mentioned in this publication are subject to change without notice. This publication supersedes and replaces all information previously supplied. SGS-THOMSON Microelectronics products are not authorized for use as critical components in life support devices or systems without express written approval of SGS-THOMSON Microelectronics.

© 1995 SGS-THOMSON Microelectronics - Printed in Italy - All rights reserved.

SGS-THOMSON Microelectronics GROUP OF COMPANIES

Australia - Brazil - France - Germany - Hong Kong - Italy - Japan - Korea - Malaysia - Malta - Morocco - The Netherlands  
- Singapore - Spain - Sweden - Switzerland - Taiwan - Thailand - United Kingdom - U.S.A.