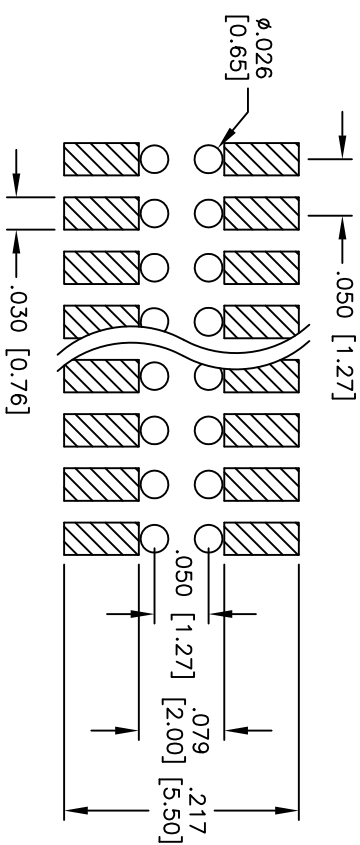
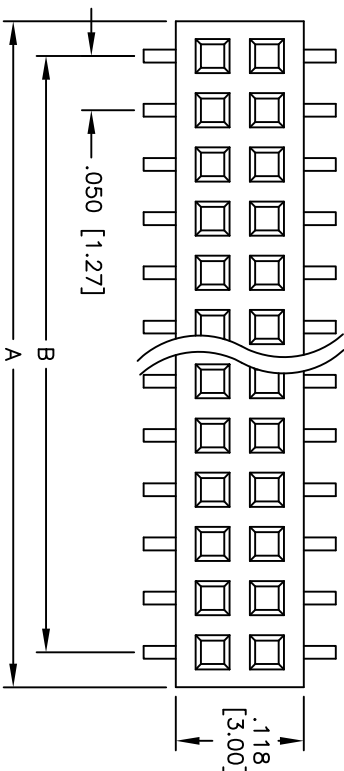
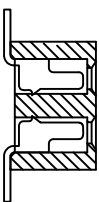
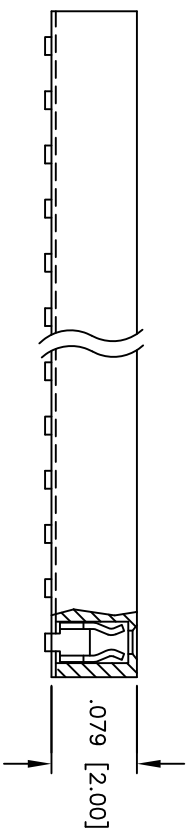


Rev	AWO #	Description	Date	Appr
-		RELEASED	8/05/10	

APPROVED: _____
 DATE: _____ TITLE: _____



RECOMMENDED PCB LAYOUT



SPECIFICATIONS:

- Material: Insulator: LCP, rated UL 94V-0
- Insulator color: Black
- Contacts: Phosphor Bronze
- Plating: Tin over Copper underplate overall.
- Tin over Copper underplate overall.
- Electrical: Current rating: 1 Amp max.
- Contact resistance: 20 mohms max. initial
- Insulation resistance: 1,000 Mohms min.
- Dielectric withstanding: 300V AC
- Temperature Rating: Operating temperature: -40°C to +105°C
- Environmental: Lead free, RoHS compliant
- Recommended soldering temp: 260°C for 5 seconds

Positions: 08 thru 80
 A = .050 [1.27] x No. of Positions per Row + .009 [0.24]
 B = .050 [1.27] x No. of Spaces

ADAM TECH

909 Rahway Avenue, Union, NJ 07083
 Phone: 908-687-5000 Fax: 908-687-5710

TITLE: .050" x .050" DUAL ROW RECEPTACLE STRIP
 .079 [2.00] HEIGHT, SMT TYPE

UNLESS OTHERWISE SPECIFIED ALL DIMENSIONS ARE INCHES [MM]	
TOLERANCES: EXCEPT AS NOTED	
INCHES	HOLDS
.X ± .10	ØXX ± .10
.XX ± .020	ØXXX ± .015
.XXX ± .015	ØXXX ± .010
APPROVALS	DATE
DRAWN	DY
CHECKED	
APPROVED	
	8/05/10

SIZE	PART NO.	REV.
X	HRS-2C-XX-T-SMT	-
REF:	SCALE: NTS	SHEET 1 OF 1



6 5 4 3 2 1

A B C D

6 5 4 3 2 1