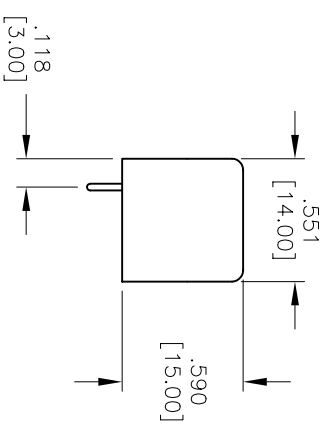
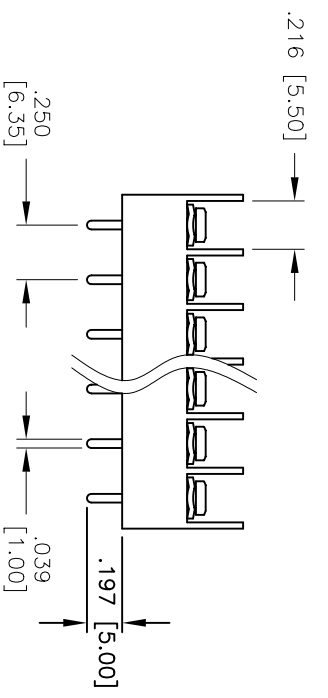
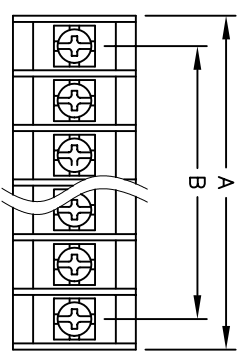


Rev	AWO #	Description	Date	Appr
-		RELEASED	01/20/05	

APPROVED: _____
 DATE: _____ TITLE: _____



A = .325 [8.25] x No. of Positions + .059 [1.50]
 B = .250 [6.35] x No. of Positions - 1

SPECIFICATIONS:
Material:
 Insulator: PBT, rated UL 94V-0
 Insulator color: Black
 Contacts: Brass, Tin plated
 Screws: Steel, Nickel plated
 Hardware: Brass, Tin plated
Electrical:
 Operating voltage: 300 VAC max.
 Current rating: 10 Amps max.
 Insulation resistance: 500 Mohms min.
 Dielectric withstanding voltage: 2,000 VAC for 1 minute
Temperature Rating:
 Operating temperature: -65°C to +125°C
 Mechanical:
 Recommended wire range: 18 - 22 stranded

ADAM TECH
 909 Rahway Avenue, Union, NJ 07083
 Phone: 908-687-5000 Fax: 908-687-5710

TITLE: 250 [6.35] CENTERLINE BARRIER BLOCK
 VERTICAL, PCB, BARRIER ENDS

UNLESS OTHERWISE SPECIFIED ALL DIMENSIONS ARE INCHES [MM] TOLERANCES: EXCEPT AS NOTED INCHES		HOLE SIZE	
.X	± .10	ØX	± .10
.XX	± .020	ØXXX	± .015
.XXX	± .015	ØXXXX	± .010
APPROVALS		DATE	
DRAWN	SS	01/20/05	
CHECKED			
APPROVED			

SIZE	PART NO.	REV.
X	TBA-XX-01-B	-
REF:	SCALE: NTS	SHEET 1 OF 1