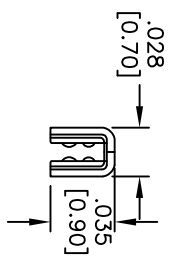
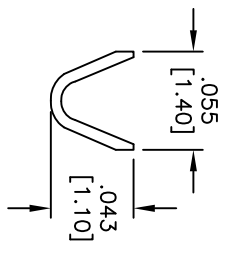
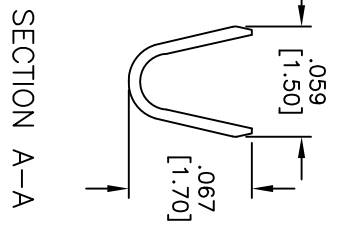
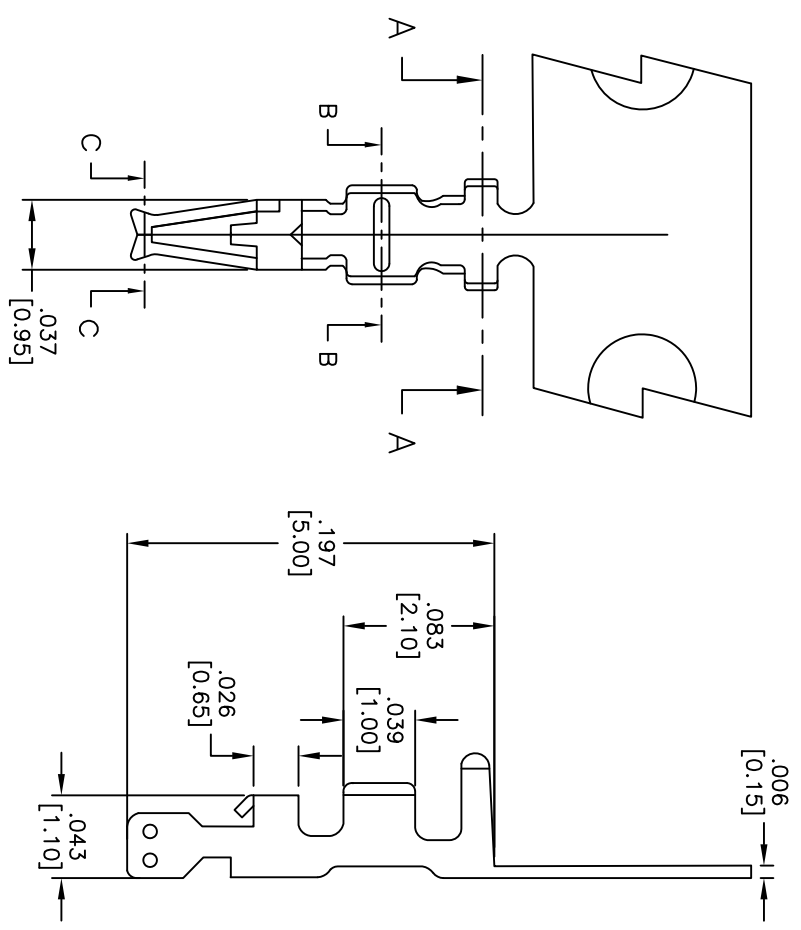


APPROVED: _____
 DATE: _____ TITLE: _____

Rev	AWO #	Description	Date	Appr
-		RELEASED	11/11/08	
A		REDRAWN	11/18/10	



SPECIFICATIONS:

Material: Phospher Bronze
 Plating: Tin Plated

Electrical:

Voltage rating: 100 VAC/DC max
 Current rating: 1 Amp max
 Contact Resistance: 20 mOhms Max.
 Dielectric withstanding voltage: 500 VAC for 1 minute

Mechanical:

Wire Range: 28-32 AWG.
 Insulation Range: 0.90mm Max.
 Packaging: Chain Reel, 15,000 pcs / reel
 Environmental:
 Lead free, RoHS compliant.



UNLESS OTHERWISE SPECIFIED
 ALL DIMENSIONS ARE INCHES [MM]
 TOLERANCES: EXCEPT AS NOTED
 INCHES: .X ± .10 ØXX ± .015
 .XX ± .020 ØXXX ± .010
 .XXX ± .015

ADAM TECH
 909 Railway Avenue, Union, NJ 07083
 Phone: 908-687-5000 Fax: 908-687-5710

APPROVALS		DATE
DRAWN	SS	11/11/08
CHECKED		
APPROVED		

REF: S00723T	SCALE: NTS	SHEET 1 OF 1
SIZE X	PART NO. 125CTD-R	REV. A
TITLE: 1.25mm TERMINAL FOR 125CH-D CRIMP HOUSING		