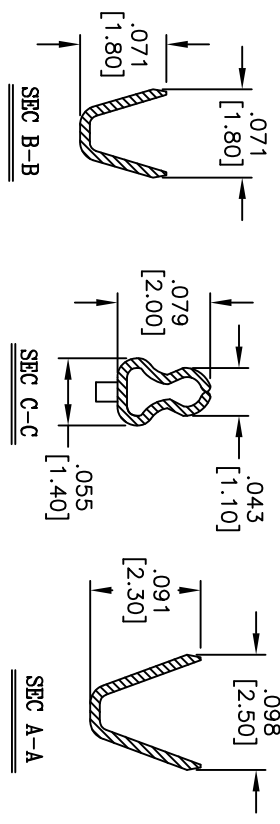
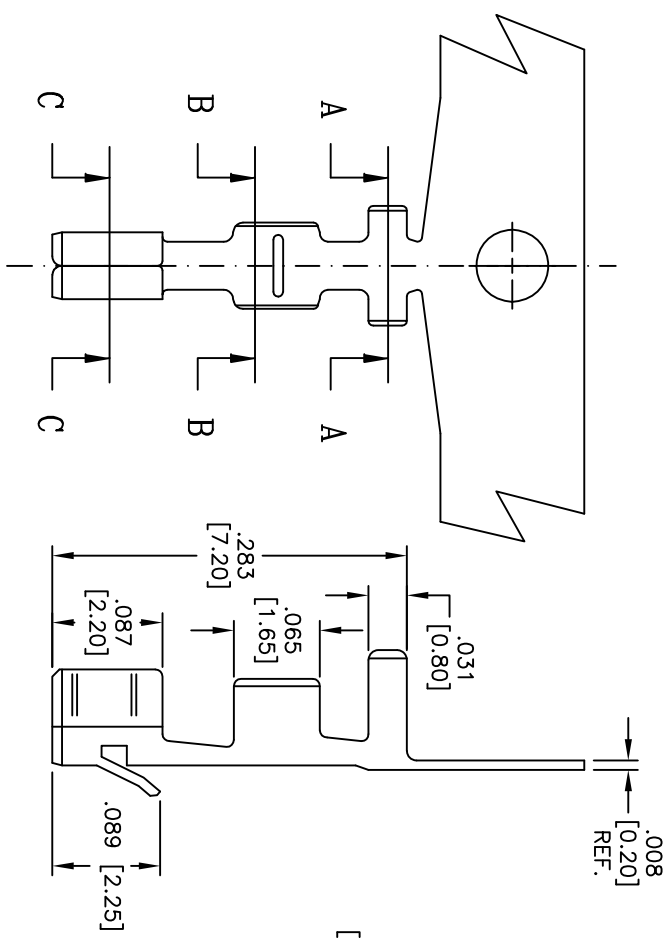


| Rev | AWO # | Description | Date | Appr |
|-----|-------|-------------|----------|------|
| - | | RELEASED | 10/22/10 | |

APPROVED: _____
 DATE: _____ TITLE: _____



SPECIFICATIONS:

Material: Phosphor Bronze
 Plating: Matt Tin plated
 Mechanical:
 Insulation O.D.: 1.2-1.7mm
 Wire Range: 22-28 AWG.
 Packaging: Reel, 10K pcs / reel
 Environmental:
 Lead free, RoHS Compliant

| | |
|--|-------------|
| UNLESS OTHERWISE SPECIFIED ALL DIMENSIONS ARE INCHES [MM] | |
| TOLERANCES: EXCEPT AS NOTED | |
| INCHES | HOLDS |
| .X ± .10 | ØX ± .10 |
| .XX ± .020 | ØXX ± .015 |
| .XXX ± .015 | ØXXX ± .010 |
| APPROVALS | DATE |
| DRAWN | DY |
| CHECKED | |
| APPROVED | |

ADAM TECH
 909 Rahway Avenue, Union, NJ 07083
 Phone: 908-687-5000 Fax: 908-687-5710

| | | |
|--------------|----------------------------|--------------|
| TITLE | .098 [2.50] CRIMP TERMINAL | |
| SIZE | PART NO. | REV. |
| X | 25CTD-MT-R | - |
| REF: 500/63T | SCALE: NTS | SHEET 1 OF 1 |

