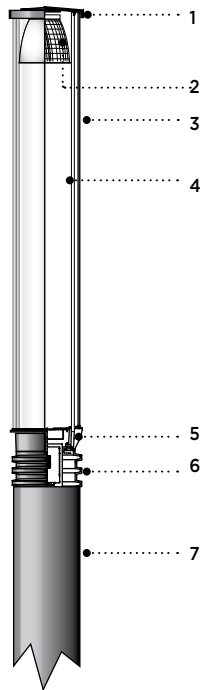


TYPE: _____ QUANTITY: _____ PROJECT: _____

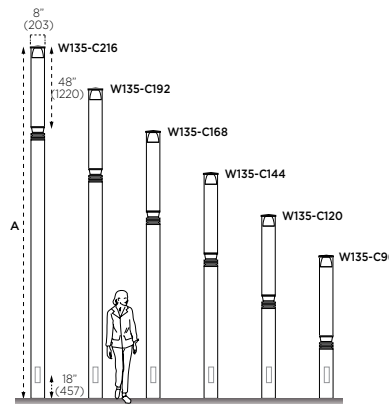
CATALOG NUMBER:

FIXTURE WATTAGE VOLTAGE FINISH OPTION OPTION OPTION OPTION



- 1- Heavy cast aluminum top cover with embedded heat sink.
- 2- Standard type V bright anodized multi-faceted elliptical reflector.
- 3- Ø 8" (203) high impact UV stabilized clear acrylic cylinder.
- 4- Ø 1/2" (13) aluminum struts.
- 5- Cast aluminum upper base with built-in hinge mechanism.
- 6- Cast aluminum driver housing.
- 7- Ø 8" (203) extruded aluminum column with built-in cast inner mounting base plate and access cover.

W135



Height (ft)	Model	Height (in)
8 Ft.	W135-C96	96" (2438)
10 Ft.	W135-C120	120" (3000)
12 Ft.	W135-C144	144" (3657)
14 Ft.	W135-C168	168" (4267)
16 Ft.	W135-C192	192" (4876)
18 Ft.	W135-C216	216" (5486)

MATERIALS

Eclipse is made of corrosion resistant 356 aluminum alloy with a copper (CU) content of less than 0.1%. The bright aluminum reflector is contained in a sealed UV stabilized clear acrylic high impact cylinder, secured with a set of (2) 1/2" diameter solid aluminum struts. The upper cast aluminum housing is designed with a tool-less hinged mechanism allowing a quick access for maintenance. The lower cast aluminum housing contains all electrical controls and easily accessible with a hinge mechanism. Eclipse light column is available in 6 standard heights. Other heights are available on request.

ELECTRICAL

HIGH INTENSITY DISCHARGE (H.I.D)

- BALLAST** Universal voltage 120/277V (347V on request) and a power factor greater than 90%. End of life protection with a minimum starting temperature of -20°C/-4°F.
- SOCKET** Pulse rated 4kV porcelain body with a nickel plated contacts rated 600V and 200°C leads.

LED

- DRIVER** 120/277V multi volt (50-60HZ) with a minimum starting temperature of -30°C/-22°F. Optional 347V on request. Output over voltage, output over current and output short circuit protection with auto-recovery. Over temperature protection (110°C).
- LED** Standard 4000K LED platform included. Optional 3000K and 3500K. Removable modular LED platform.

LIFE

51,000hrs $L_{70}B_{50}$ (based on IESNA TM-21 Test Method and LM-80 data).
68,000hrs $L_{70}B_{50}$ (calculated projection from LM-80 data).

FINISH

Five-stage preparation process including preheating of cast aluminum parts for air extraction, and an environmentally friendly alloy sealant. Polyester powder coating is applied through an electrostatic process and oven cured for long term finish.

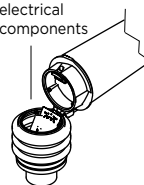
MOUNTING

Eclipse is designed for ease of access and installation. The inner cast aluminum base plate is secured with a set of (4) 3/4"-13 galvanized anchor bolts. Accessibility is done through a flush mount 4"x7" (100X178) hand hole cover plate. No external visible mounting hardware.

CERTIFICATION

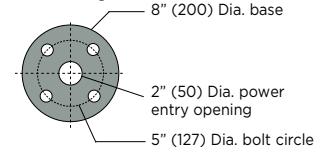
Tested to UL1598 and CSA 22.2 #250. ETL listed wet location. Photometric testing performed by an independent laboratory in accordance with IES LM-79-08 standards at 25°C. Lumen depreciation in accordance with IESNA LM80 standards. CE certification on request. Rated IP65

Access to electrical components

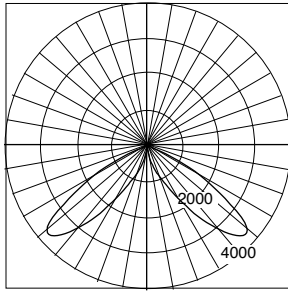


Eclipse features a unique tool-less swing out column assembly, allowing a quick access to luminaire maintenance, leaving a clean optical chamber to ensure a high lumen performance.

Mounting



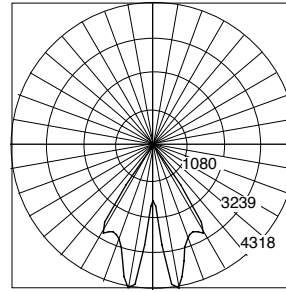
TYPICAL PHOTOMETRY SUMMARY



Descriptive Information
 Total Lms: 14000 Lumens
 Total Input Watts: 150 W
 Source: HID
 Total efficiency: 62.5%
 BUG Rating: B3-U3-G1
 Distribution: Type V

W135-M150T

Outdoor report Polar graph
 Maximum Candela = 3778



Descriptive Information
 Total Lms: 3640 Lumens
 Total Input Watts: 56 W
 Source: LED
 Total efficiency: 65%
 BUG Rating: B3-U0-G0
 Distribution: Type V
 CCT: 4000K

W135-L1W56

Outdoor report Polar graph
 Maximum Candela = 4318

Please visit our web site www.luminis.com for complete I.E.S. formatted download data.

LUMINAIRE SELECTION

MODEL#	COLUMN OAH	LED LIGHT SELECTION	VOLTAGE ¹	FINISH
 <input type="checkbox"/> W135	A <input type="checkbox"/> C96 96" (2438) <input type="checkbox"/> C120 120" (3000) <input type="checkbox"/> C144 144" (3657) <input type="checkbox"/> C168 168" (4267) <input type="checkbox"/> C192 192" (4876) <input type="checkbox"/> C216 216" (5846)	White LED <input type="checkbox"/> L1W30 30W 1980 80 4000K <input type="checkbox"/> L1W56 56W 3640 80 4000K	<input type="checkbox"/> 120V <input type="checkbox"/> 277V Optional <input type="checkbox"/> 347V	STANDARD COLORS <input type="checkbox"/> WHT Snow white <input type="checkbox"/> BKT Jet black <input type="checkbox"/> BZT Bronze <input type="checkbox"/> MST Matte silver <input type="checkbox"/> GRT Titanium gray <input type="checkbox"/> DGT Gun metal <input type="checkbox"/> CHT Champagne OPTIONAL COLORS Wood grain finishes <input type="checkbox"/> NMR Mahogany red <input type="checkbox"/> NMO Maple oak <input type="checkbox"/> NTW Teak wood Base column only <input type="checkbox"/> CS Custom color <input type="checkbox"/> RAL RAL# color (Refer to color chart)
		METAL HALIDE ² T LAMP TYPE <input type="checkbox"/> M39T <input type="checkbox"/> M70T (T6/G12 base) <input type="checkbox"/> M100T <input type="checkbox"/> M150T		

NOTE: Eclipse light column is composed of two parts.
 Please specify:
 1- The Luminaire W135 with the selected LED light source
 2- The base column to indicate the overall luminaire height. Example: W135-L1W56-C144

OPTIONS

ELECTRICAL

- FS** Fuse
- PH** Photocell
- 347L** 347V input power driver
- SP** Surge protector 10KV
- GFI** Ground fault interruption receptacle

- Alternate CCT °K LED
- K3** 3000K CCT LED
 - K35** 3500K CCT LED

ACCESSORIES

- LB1** Latching lock limited access to electrical components
- BNF** Fixed banner support (single arm at top)³

NOTES

- 1- Luminaires are factory prewired for 120V (if no voltage is specified.) For other voltages, please specify with catalog number, or consult factory.
- 2- Unless otherwise noted, lamps are by others.
- 3- BNF is factory set in position as required. Location along pole to be specified.

LUMINIS®