

Applications

- Overcurrent protection for line cards

Features

- Compliant with ITU-T K20, K21, K45
 - basic level lightning surges (10/700 μ s)
 - basic level power induction (600 V, 1 A, 0,2 s)
 - power contact criteria A/B (230 V, 15 min.)
- Suitable for continuous connection to mains voltages of 110/230 VAC in tripped (high ohmic) condition
- Narrow resistance tolerance

Options

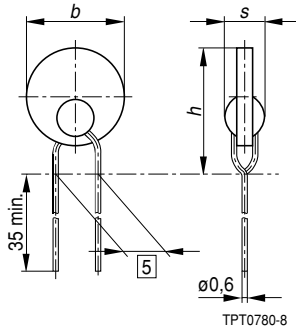
- Alternative tolerances and resistances on request

Delivery mode

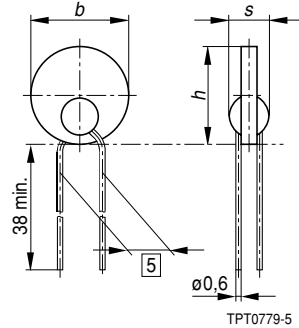
- Cardboard tape, reeled (standard) or in AMMO pack (on request); cardboard strips (on request)
- Exception: B 1610, cardboard strips (standard), cardboard tape or AMMO pack on request

Dimensional drawings

Kinked leads



Straight leads



Dimensions (mm)

Type	Leads	b_{max}	h_{max}	s_{max}
B 1610	kinked	10,2	13,1	5,0
B 1042	kinked	8,2	12,1	4,0
B 1042	straight	8,2	8,2	4,0
B 1045	kinked	6,6	9,5	4,0
B 1045	straight	6,6	6,6	4,0

1) C 1077 coated type

Type	Leads	b_{max}	h_{max}	s_{max}
B 1008	kinked	8,2	12,1	4,0
B 1008	straight	8,2	8,2	4,0
B 1603	kinked	10,2	12,6	5,0
B 1184	kinked	8,2	12,1	5,0
B 1184	straight	8,2	8,2	5,0
C 1077 ¹⁾	kinked	8,5	12,5	4,5

General technical data

Rated voltage	V_N	60	VDC
Resistance tolerance	ΔR_N	$\pm 20\%$	
Operating temperature range ($V = 0$) ($V = 230\text{ V}$)	T_{op}	$-25/+125$	$^{\circ}\text{C}$
	T_{op}	$0/+60$	$^{\circ}\text{C}$
Resistance matching per reel	$R_{25, match}$	$\pm 0,5^1)$	Ω

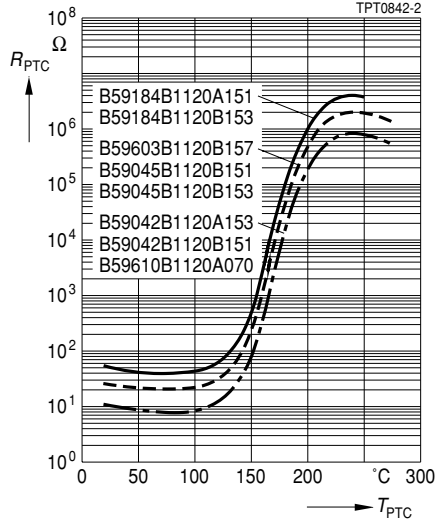
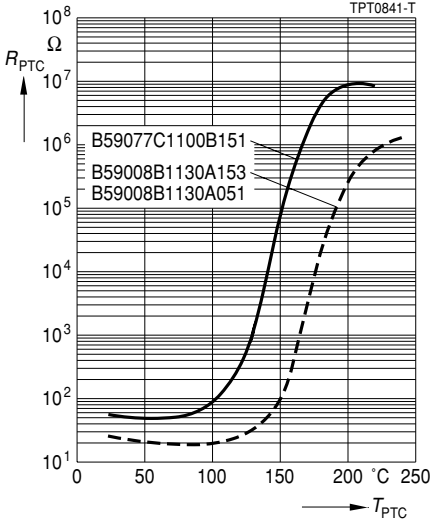
Electrical specifications and ordering codes

Type	R_N Ω	R_{min} Ω	I_N @ 25 $^{\circ}\text{C}$ mA	I_N @ 70 $^{\circ}\text{C}$ mA	I_S @ 25 $^{\circ}\text{C}$ mA	I_{Smax} @ 230 VAC A	t_S @ I_{Smax} , 230 VAC s	Ordering code
Kinked leads, maximum switching voltage $V_{Smax} = 265\text{ VAC}$								
B 1610 ¹⁾	10	6,0	150	105	300	10,0	< 0,2	B59610B1120A070
B 1042	10	6,5	150	105	300	1,0	< 7,0	B59042B1120B151
B 1045	25	16	100	70	220	3,0	< 0,2	B59045B1120B151
B 1008	25	16	120	90	300	3,0	< 0,4	B59008B1130A051
B 1603	25	16	100	70	200	1,5	< 3,0	B59603B1120B157
B 1184	50	30	90	50	190	2,5	< 0,2	B59184B1120A151
Straight leads, maximum switching voltage $V_{Smax} = 265\text{ VAC}$								
B 1042	10	6,5	150	105	300	1,0	< 7,0	B59042B1120A153
B 1045	25	16	100	70	220	3,0	< 0,2	B59045B1120B153
B 1008	25	16	120	90	300	3,0	< 0,4	B59008B1130A153
B 1184	50	30	90	50	190	2,5	< 0,2	B59184B1120B153
Kinked leads, coated type, maximum switching voltage $V_{Smax} = 600\text{ VAC}$								
C 1077	55	38	55	30	200	3,0	< 0,2	B59077C1100B151

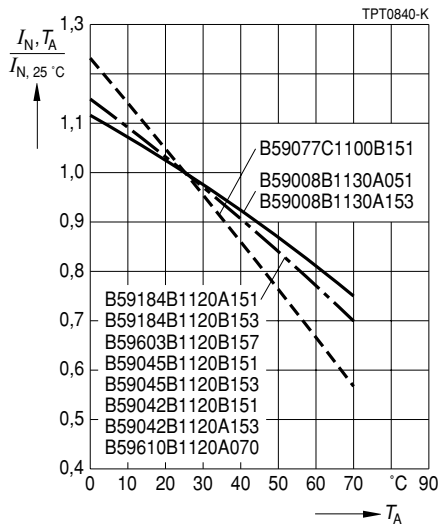
1) B 1610 not matched

Characteristics (typical)

PTC resistance R_{PTC} versus PTC temperature T_{PTC}
(measured at low signal voltage)



Rated current I_N versus ambient temperature T_A
(measured in still air)



Herausgegeben von EPCOS AG

Unternehmenskommunikation, Postfach 80 17 09, 81617 München, DEUTSCHLAND

☎ ++49 89 636 09, FAX (0 89) 636-2 26 89

© EPCOS AG 2002. Vervielfältigung, Veröffentlichung, Verbreitung und Verwertung dieser Broschüre und ihres Inhalts ohne ausdrückliche Genehmigung der EPCOS AG nicht gestattet.

Bestellungen unterliegen den vom ZVEI empfohlenen Allgemeinen Lieferbedingungen für Erzeugnisse und Leistungen der Elektroindustrie, soweit nichts anderes vereinbart wird.

Diese Broschüre ersetzt die vorige Ausgabe.

Fragen über Technik, Preise und Liefermöglichkeiten richten Sie bitte an den Ihnen nächstgelegenen Vertrieb der EPCOS AG oder an unsere Vertriebsgesellschaften im Ausland. Bauelemente können aufgrund technischer Erfordernisse Gefahrstoffe enthalten. Auskünfte darüber bitten wir unter Angabe des betreffenden Typs ebenfalls über die zuständige Vertriebsgesellschaft einzuholen.

Published by EPCOS AG

Corporate Communications, P.O. Box 80 17 09, 81617 Munich, GERMANY

☎ ++49 89 636 09, FAX (0 89) 636-2 26 89

© EPCOS AG 2002. Reproduction, publication and dissemination of this brochure and the information contained therein without EPCOS' prior express consent is prohibited.

Purchase orders are subject to the General Conditions for the Supply of Products and Services of the Electrical and Electronics Industry recommended by the ZVEI (German Electrical and Electronic Manufacturers' Association), unless otherwise agreed.

This brochure replaces the previous edition.

For questions on technology, prices and delivery please contact the Sales Offices of EPCOS AG or the international Representatives.

Due to technical requirements components may contain dangerous substances. For information on the type in question please also contact one of our Sales Offices.