

New Jersey Semi-Conductor Products, Inc.

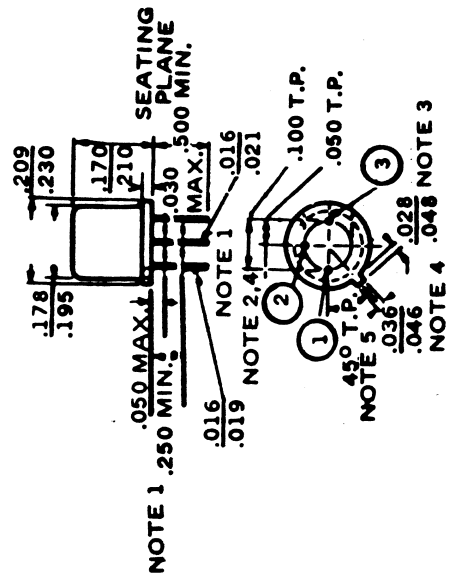
20 STERN AVE.
 SPRINGFIELD, NEW JERSEY 07081
 U.S.A.

TELEPHONE: (201) 376-2922
 (212) 227-6005
 FAX: (201) 376-8960

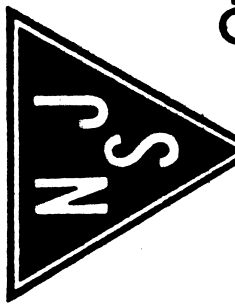
TRIODE TRIGGER THYRISTORS SILICON BIDIRECTIONAL SWITCH

TYPE NUMBER	1 TYPE CODE	SWITCHING VOLTAGE VS		3 MAXIMUM REPETITIVE ON-STATE CURRENT		MAX. HOLD. CUR. I _H (A)	MAX. SWITCH. CURRENT I _{SM} (A)	MAXIMUM ON-STATE VOLTAGE		TYP. SW. TIME t _{on} (s)	SURGE CURRENT I _{SM} (A)	PULSE WIDTH (s)	OPER. TEMP. RANGE °C	LEAD CODE	OUTLINE DRAWING
		2 MAX (V)	MIN (V)	ITRM (A)	REP RATE (Hz)			VT (V)	VF (V)						
2N4986	SJS	9.0	7.0	1.0	1.0k	750m	200u	1.5	175m	1.0u	5.0	10u	5C*	AA	TO18

TO18



- NOTES:
- The specified lead dia. applies to the zone between .050 and .250 from the base seat. Between .250 and end of lead a max. of .021 is held. Outside of these zones the lead dia. is not controlled.
 - Leads having max. dia. of .019 measured in gauging plane .054 ±.001 — .000 below the seating plane of the device shall be within .007 of their true positions relative to the max. tab width.
 - Measured from max. dia. of the actual device.
 - The device may be measured by direct methods or by the gauge and gauging procedure described on Gauge Drawing GS-2.
 - Tab centerline.



Quality Semi-Conductors