



CRH, 3CRH SERIES

SPARK QUENCHER



Features

- 500VAC rating for application in high voltage phase control.
- Flexible wire leads with external mounting tab.
- 6 and 10 watt non-inductive, high pulse resistor.

Applications

- 500VAC line Automatic machines and Office appliances.

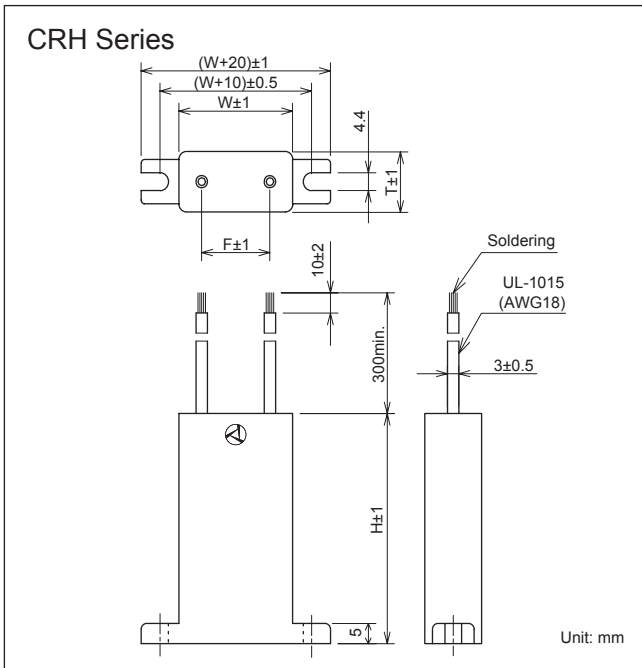


CRH Series

• Circuit

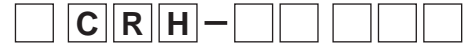


• Dimensions



Safety Standard	File No.
UL :UL1283	E78644

• Model numbering system



Supported Series Name Capacitance Resistance

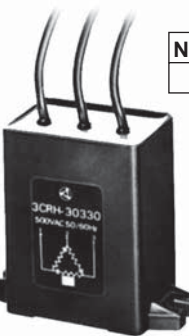
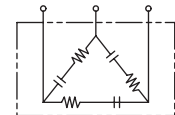
None	1 Phase
3	3 Phase

10	0.1μF	270	27Ω
20	0.22μF	330	33Ω
30	0.33μF	470	47Ω
50	0.47μF	680	68Ω

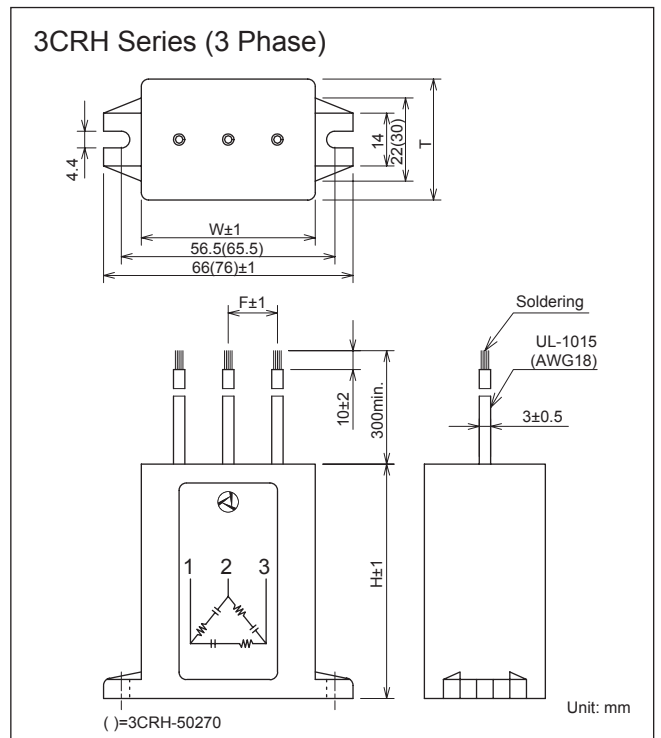
The combination of Resistance and Capacitance is shown in following chart.

3CRH Series (3 Phase)

• Circuit



• Dimensions



Electrical Specifications

Rated Voltage **500VAC**

Safety Standard	Model Number	Capacitance μF±20%	Resistance Ω±30%	Dimensions				Pulse condition (max.)				Peak Pulse Voltage	Test Voltage	Insulation Resistance		
				W	H	T	F	Peak to peak	Pulse width	Repetitive frequency	Pulse width (sec) x Frequency (Hz)					
UL	CRH-10680	0.1	68(6W)	30	57	15	18	1,000V	50msec.	720Hz	1.0	1,500V	Line to Line 1,250VAC 50/60Hz 60sec Line to Case 2,000VAC 50/60Hz 60sec	Line to Line 10,000MΩmin. Line to Case 100,000MΩmin. (at 500VDC)		
	CRH-20470	0.22	47(6W)													
	CRH-30330	0.33	33(6W)													
	CRH-50270	0.47	27(10W)	40	20	28										
	3CRH-30330	0.33/1 phase	33 (6W)/1 phase	46	62	32	13								100msec.	0.2
	3CRH-50270	0.47/1 phase	27(10W)/1 phase	56	40	18										

Operating Temperature: -40~+70°C