



# CM0090Q0508AT COMMON MODE FILTER SPECIFICATION

Rev. A

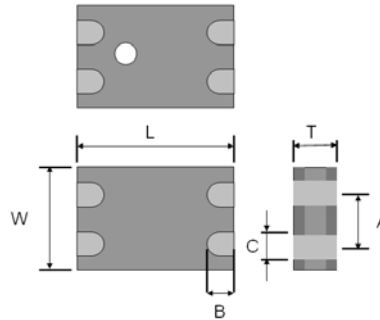
## PRODUCT FEATURES

1. Surface mount common mode filter with a small size of 2.0 X 1.25 X 1.0 mm, RoHS compliant.
2. Provide wide pass band and high attenuation for common mode noise.
3. Highly stable under temperature and humidity changes.

## RF CHARACTERISTICS

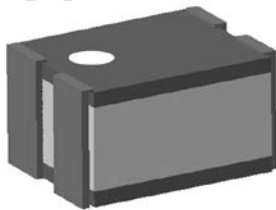
P/N CM0090Q0508AT	Specification
Common Mode Impedance	120 Ohms $\pm$ 20% @ 100MHz
DC Resistance	1.5 $\Omega$ max.
Rated Current	400 mA
Characteristic Impedance (Differential)	90 $\Omega$ (Typical)
Operating temperature range	-40°C to +85°C

## PHYSICAL DIMENSIONS



Symbol	Dimension (mm)
L	2.00 $\pm$ 0.10
W	1.25 $\pm$ 0.10
T	1.00 $\pm$ 0.10
A	0.68 $\pm$ 0.15
B	0.35 $\pm$ 0.15
C	0.35 $\pm$ 0.15

## TERMINAL CONFIGURATION



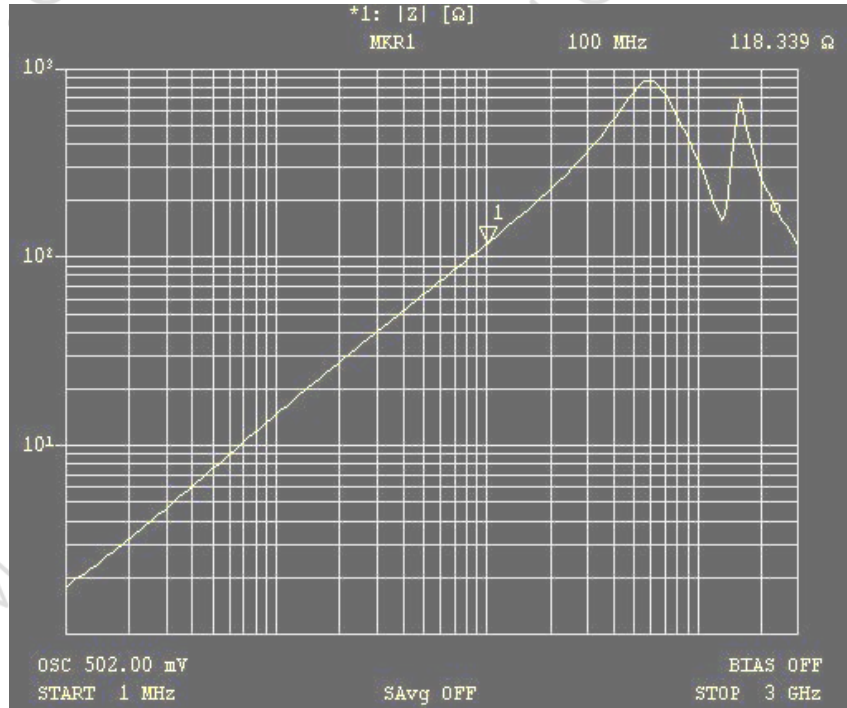
## PCB DESIGN/LAYOUT CONSIDERATION

Figure	Symbol	Dimension (mm)
	L1	1.20 $\pm$ 0.10
	L2	2.60 $\pm$ 0.05
	L3	0.80 $\pm$ 0.05
	L4	0.33 $\pm$ 0.05
Design trace width to be 50 $\Omega$ impedance.		



## Typical RF Performance

Common Mode:



Differential Mode:

