

Ultra Slim Inline Relay

**PC458**



**FEATURES**

- Handles from signal level to 5 amps
- 1 Form A contact form
- Ultra Slim, 5 MM package
- SIL terminal pattern
- Terminals on 1/10 in grid pattern
- 2 Kv dielectric between coil and contacts
- Sealed, immersion cleanable



File # E86876

**UL/CSA RATINGS**

Load Type	All Forms All Contacts
General Use	3A or 5A at 30VDC / 250VAC
Resistive	3A or 5A at 30VDC / 250VAC
Minimum Load	0.1 mA @ 0.1 VDC

**CONTACT DATA**

<b>Material</b>		AgCdO (Silver Cadmium Oxide) AgCdO+Au (Silver Cad Oxide Gold Clad)
<b>Initial Contact Resistance</b>		100 milliohms max @ 0.1A, 6VDC
<b>Service Life</b>	<b>Mechanical</b>	2 X 10 <sup>7</sup> Operations
	<b>Electrical</b>	1 X 10 <sup>5</sup> Operations

**CHARACTERISTICS**

<b>Operate Time</b>	6 ms. Max.
<b>Release Time</b>	3 ms. Max.
<b>Insulation Resistance</b>	1000 megohms min, at 500VDC, 50%RH
<b>Dielectric Strength</b>	2000 Vrms, 1 min. between coil and contacts 1000 Vrms, 1 min. between open contacts
<b>Shock Resistance</b>	10 g, 11ms, functional; 100 g, destructive
<b>Vibration Resistance</b>	DA 2.5 mm, 10 - 55 Hz
<b>Power Consumption</b>	.12W
<b>Ambient Temperature Range</b>	-40 to 70 C operating for class B, -40 to 130 C storage
<b>Weight</b>	3 grams approx.

**ORDERING INFORMATION**

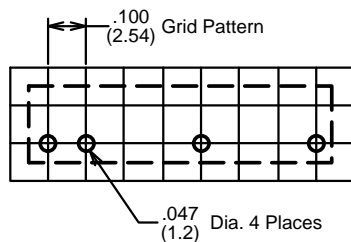
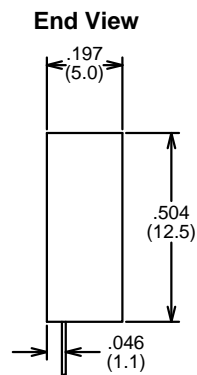
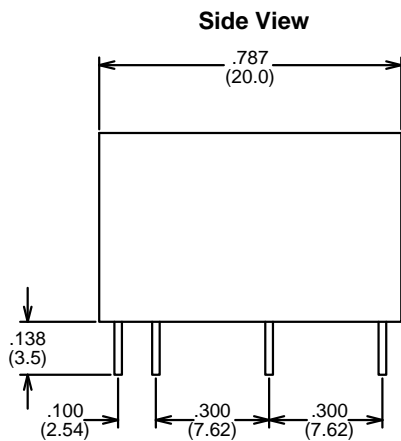
Example:	PC458	-1A	-12	S	-5
Model					
Contact Form					
1A					
Coil Voltage					
Enclosure					
S: Sealed; C: Flux Free					
Contact Rating					
3: 3 AMP; 5: 5 AMP					

**COIL DATA**

Coil Voltage	Resistance ohms $\pm$ 10%	Must Operate Voltage Max. (VDC)	Must Release Voltage Min. (VDC)	Continuous Voltage Max. (VDC)
3	75	2.2	0.15	3.3
5	208	3.5	0.25	5.5
6	300	4.2	0.30	6.6
9	675	6.3	0.45	9.9
12	1200	8.4	0.60	13.2
18	2700	12.6	0.90	19.8
24	3200	16.8	1.20	26.4

Note: Custom coil voltages within the ranges shown are available on special order.

**Dimensions in Inches (millimeters)  
Drawings are 2X actual size**



**Hole Pattern**



**Wiring Diagram**

**Notes:**

Tolerances  $\pm$  .010 unless otherwise noted  
 Relays previously tested or used above 10mA at 6VDC or higher  
 are not recommended for subsequent use in low level applications



3220 Commander Drive, Suite 102, Carrollton, Texas 75006

Sales: (888) 997-3933, (972) 713-6272 Fax: (972) 735-0964 email: sales@pickercomponents.com www.pickercomponents.com