

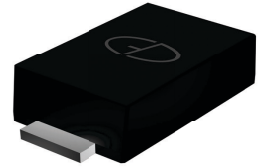


RS1210FL

Surface Mount Glass Passivated Fast Recovery Rectifier
Reverse Voltage 1000V Forward Current 1.2A

Features

- Glass passivated fast recovery rectifiers
- Very low profile - typical height of 1.0 mm
- Low forward voltage drop
- Low leakage current
- Moisture sensitivity: level 1, per J-STD-020
- AEC-Q101 qualified
- High temperature soldering guaranteed: 260°C/10 seconds
- Halogen-free according to IEC 61249-2-21 definition



Package: eSGA
(SOD-123FL)



RoHS
COMPLIANT

TYPICAL APPLICATIONS

For use of general purpose rectification in lighting, cellular phones, portable devices, power supplies and other consumer applications.

MAXIMUM RATINGS (TA = 25 °C unless otherwise noted)			
PARAMETER	SYMBOL	RS1210FL	UNIT
Maximum repetitive peak reverse voltage	VRRM	1000	V
Maximum RMS voltage	VRMS	700	V
Maximum DC blocking voltage	VDC	1000	V
Maximum average forward rectified current	IF(AV)	1.2	A
Peak forward surge current 8.3 ms single half sine-wave superimposed on rated load	IFSM	50	A
Operating junction and storage temperature range	TJ, TSTG	- 55 to + 150	°C

ELECTRICAL CHARACTERISTICS (TA = 25 °C unless otherwise noted)				
PARAMETER	TEST CONDITIONS	SYMBOL	RS1210FL	UNIT
Maximum instantaneous forward voltage	1.2A	VF	1.3	Volts
Maximum DC reverse current at rated DC blocking voltage	TA=25°C	IR	5	µA
	TA=125°C		50	
Maximum reverse recovery time	IF=0.5A, IR=1.0A, Irr=0.25A	trr	250	nS
Typical junction capacitance	4.0 V, 1 MHz	CJ	7.5	pF
Typical thermal resistance	junction to mount	RθJM ⁽¹⁾	3.3	°C/W
	junction to ambient	RθJA ⁽¹⁾	67	
	junction to case	RθJC ⁽¹⁾	25	

Note1): Mounted on PCB with 5.0×5.0mm copper pads, 2 OZ, FR4 PCB;

RATINGS AND CHARACTERISTICS CURVES

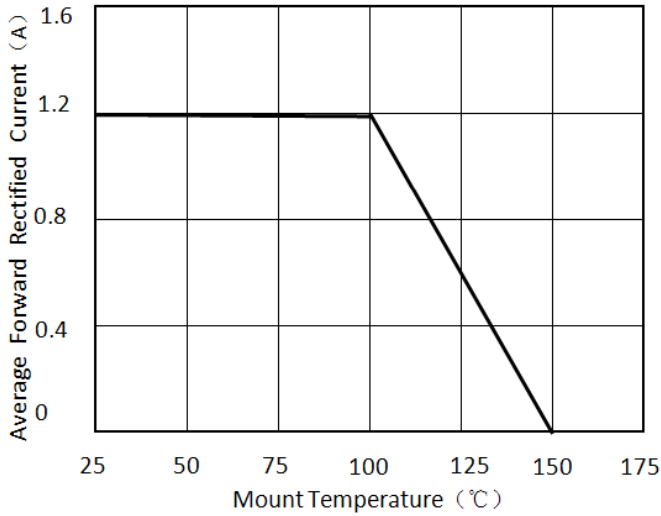


Figure 1. Forward Current Derating Curve

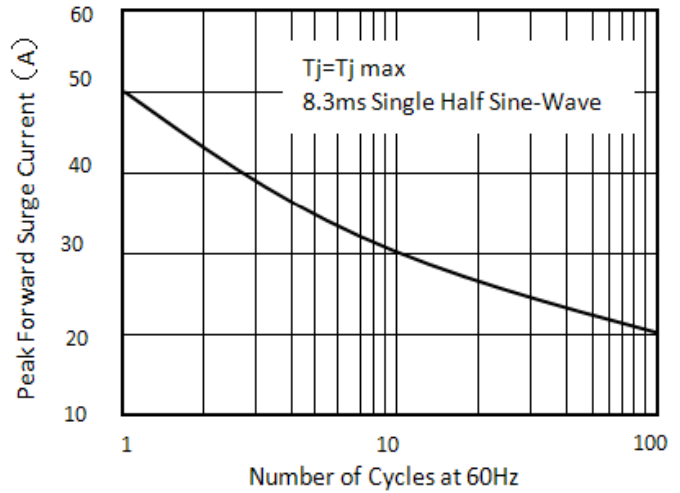


Figure 2. Maximum Non-Repetitive Peak Forward Surge Current

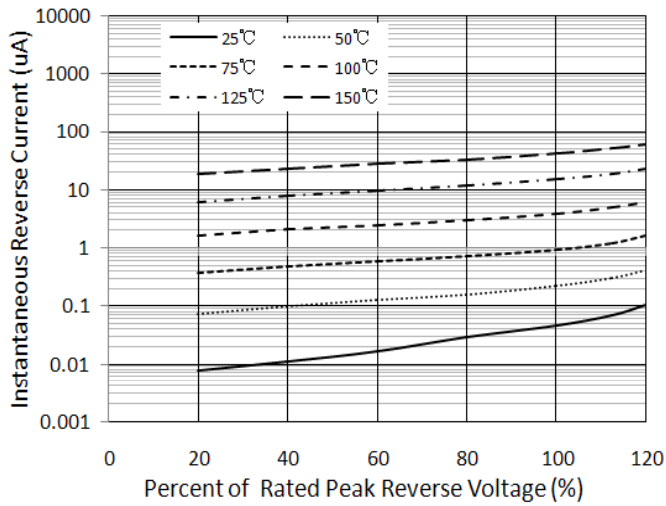


Figure 3. Typical Reverse Characteristics

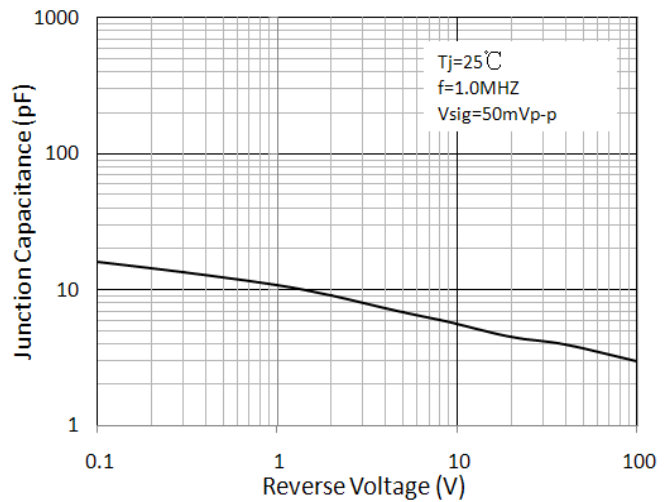


Figure 4. Typical Junction Capacitance

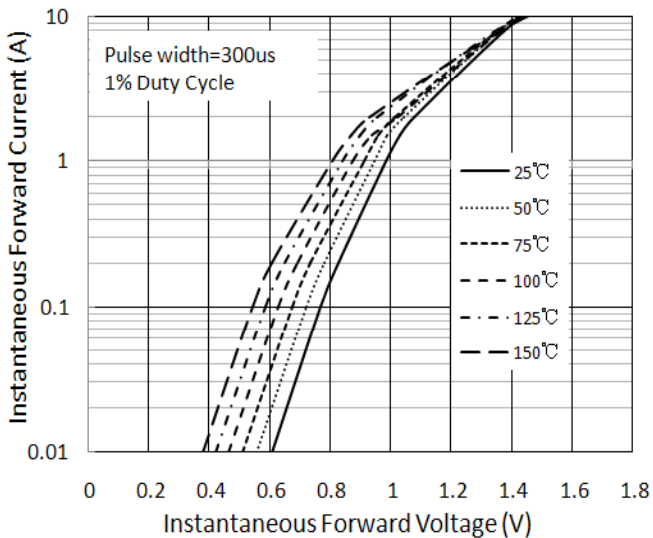
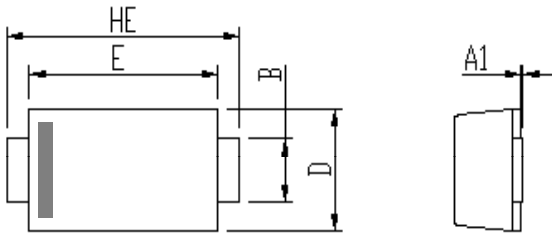
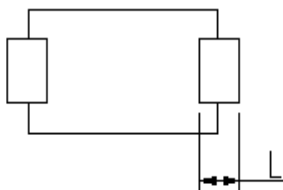
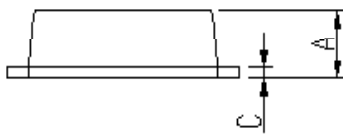


Figure 5. Typical Instantaneous Forward Characteristics

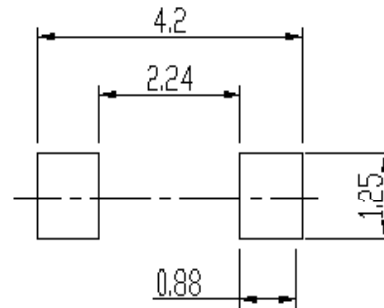
PACKAGE OUTLINE DIMENSIONS



DIM	Unit: mm		Unit: inch	
	MIN	MAX	MIN	MAX
A	0.9	1.08	0.035	0.043
A1	0	0.1	0.000	0.004
B	0.85	1.05	0.033	0.041
C	0.1	0.25	0.004	0.010
D	1.7	2	0.067	0.079
E	2.9	3.1	0.114	0.122
L	0.43	0.83	0.017	0.033
HE	3.5	3.9	0.138	0.154



Soldering footprint



PACKING INFORMATION

Packing quantities:

3000 pcs/Reel, 40 Reels/Box; 8mm Tape, 7" Reel

Tape & Reel Specification

