



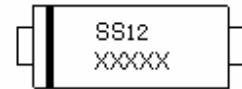
SS12 THRU SS110 SCHOTTKY RECTIFIER

Features:

- The plastic package carries Underwriters Laboratory Flammability Classification 94V-0
- For surface mounted applications
- Metal silicon junction, majority carrier conduction
- Low Power Loss, High Efficiency
- Built-in strain relief, ideal for automated placement
- High forward surge current capability
- High temperature soldering guaranteed: 250 C/10 seconds at terminals
- This is a Pb - Free Device
- All SMC parts are traceable to the wafer lot
- Additional testing can be offered upon request

Mechanical Data:

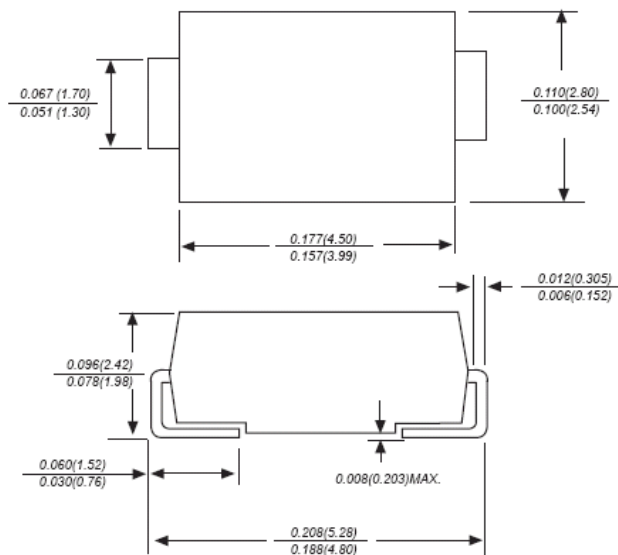
- Case: JEDEC SMA molded plastic body
- Terminals: leads solderable per MIL-STD-750, Method 2026
- Polarity: Color band denotes cathode end
- Weight: 0.003 ounce, 0.093 grams
- Mounting Position: Any



SS12

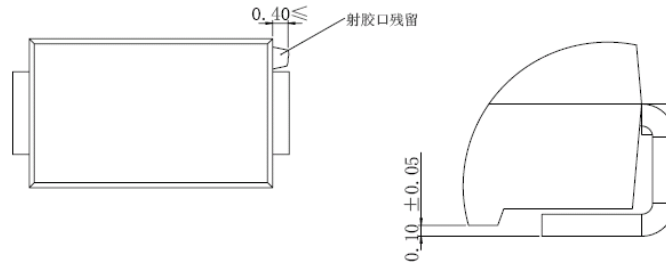
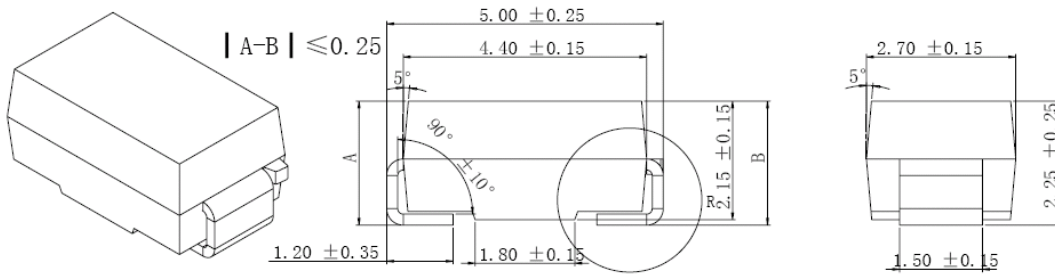
Mechanical Dimensions (In mm / Inches)

DO-214AC/SMA



Dimensions in inches and (millimeters)

OPTION 1



OPTION 2(JK)

SMA

MARKING, MOLDING RESIN

Marking for SS12/13/14/15/16/18/110, 1st row SS12/13/14/15/16/18/110, 2nd row YYWWL

Where YY is the manufacture year

WW is the manufacture week code

L is the wafer's Lot Number



Ordering Information:

Device	Package	Shipping
SS12 THRU SS110	SMA (Pb-Free)	5000pcs / reel

For information on tape and reel specifications, including part orientation and tape sizes, please refer to our Tape and Reel Packaging Specification.

Maximum Ratings and Electrical Characteristics

Ratings *at 25 C ambient temperature unless otherwise specified.

Single phase half-wave 60Hz, resistive or inductive load, for capacitive load current derate by 20%.

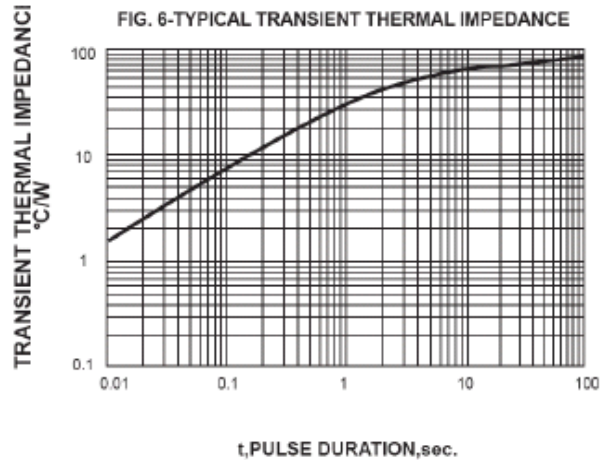
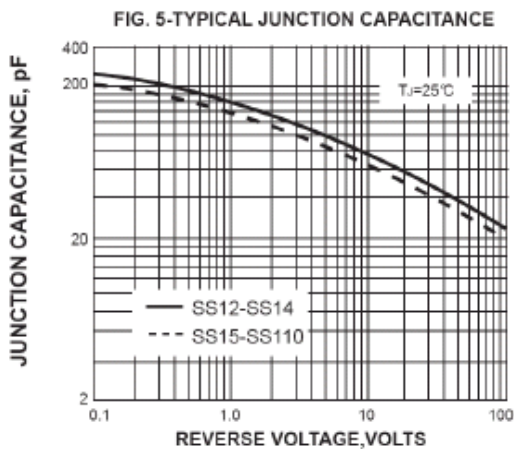
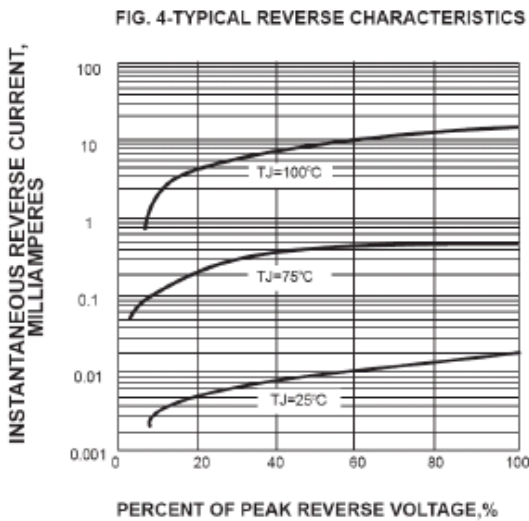
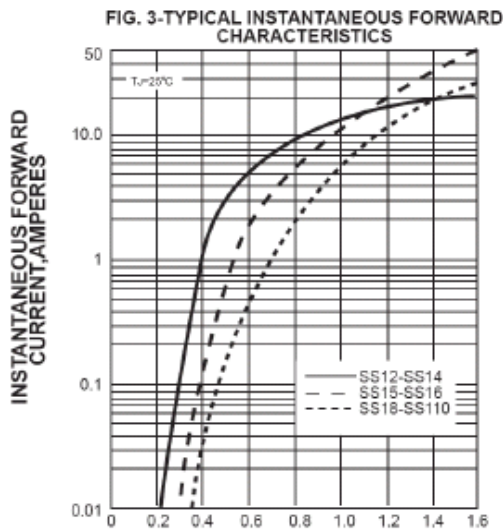
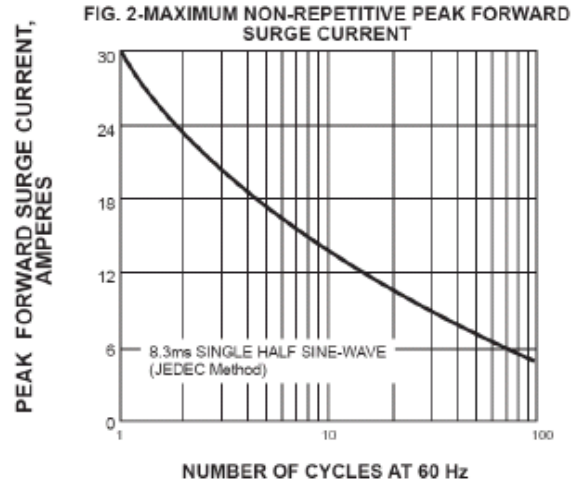
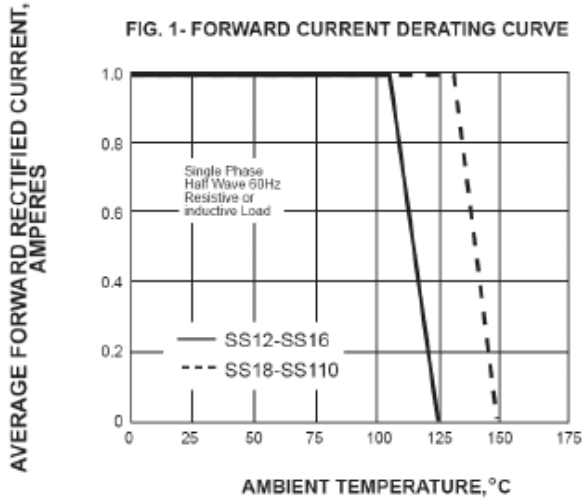
	SYMBOLS	SS12	SS13	SS14	SS15	SS16	SS18	SS110	UNITS	
Maximum repetitive peak reverse voltage	V_{RRM}	20	30	40	50	60	80	100	VOLTS	
Maximum RMS voltage	V_{RMS}	14	21	28	35	42	56	70	VOLTS	
Maximum DC blocking voltage	V_{DC}	20	30	40	50	60	80	100	VOLTS	
Maximum average forward rectified current at T_L (see fig.1)	$I_{(AV)}$	1.0							Amp	
Peak forward surge current 8.3ms single half sine-wave superimposed on rated load (JEDEC Method)	I_{FSM}	30.0							Amps	
Maximum instantaneous forward voltage at 1.0A	V_F	0.45	0.55	0.70		0.85			Volts	
Maximum DC reverse current at rated DC blocking voltage $T_A=25\text{ C}$ $T_A=100\text{ C}$	I_R	0.5					10.0		5.0	mA
Typical junction capacitance (NOTE 1)	C_J	110			90				pF	
Typical thermal resistance (NOTE 2)	$R_{\theta JA}$	88.0							C/W	
Operating junction temperature range	T_J	-65 to +125					-65 to +150		C	
Storage temperature range	T_{STG}	-65 to +150							C	

Note: 1. Measured at 1MHz and applied reverse voltage of 4.0V D.C.

2. P.C.B. mounted with 0.2x0.2"(5.0x5.0mm) copper pad areas



Technical Data
Data Sheet N0229, Rev. -





DISCLAIMER:

- 1- The information given herein, including the specifications and dimensions, is subject to change without prior notice to improve product characteristics. Before ordering, purchasers are advised to contact the SMC - Sangdest Microelectronics (Nanjing) Co., Ltd sales department for the latest version of the datasheet(s).
- 2- In cases where extremely high reliability is required (such as use in nuclear power control, aerospace and aviation, traffic equipment, medical equipment, and safety equipment), safety should be ensured by using semiconductor devices that feature assured safety or by means of users' fail-safe precautions or other arrangement.
- 3- In no event shall SMC - Sangdest Microelectronics (Nanjing) Co., Ltd be liable for any damages that may result from an accident or any other cause during operation of the user's units according to the datasheet(s). SMC - Sangdest Microelectronics (Nanjing) Co., Ltd assumes no responsibility for any intellectual property claims or any other problems that may result from applications of information, products or circuits described in the datasheets.
- 4- In no event shall SMC - Sangdest Microelectronics (Nanjing) Co., Ltd be liable for any failure in a semiconductor device or any secondary damage resulting from use at a value exceeding the absolute maximum rating.
- 5- No license is granted by the datasheet(s) under any patents or other rights of any third party or SMC - Sangdest Microelectronics (Nanjing) Co., Ltd.
- 6- The datasheet(s) may not be reproduced or duplicated, in any form, in whole or part, without the expressed written permission of SMC - Sangdest Microelectronics (Nanjing) Co., Ltd.
- 7- The products (technologies) described in the datasheet(s) are not to be provided to any party whose purpose in their application will hinder maintenance of international peace and safety nor are they to be applied to that purpose by their direct purchasers or any third party. When exporting these products (technologies), the necessary procedures are to be taken in accordance with related laws and regulations..