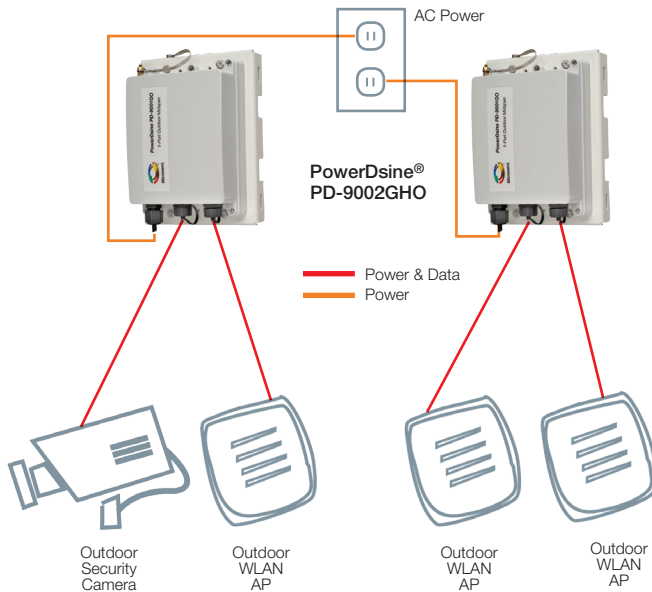


# PowerDsine 9002GHO

Dual-port, Outdoor PoE Passive Hub, 30W, IEEE802.3at Compliant



## Overview

PowerDsine 9002GHO Power over Ethernet (PoE) dual-port Passive Hub offers a cost effective, IEEE 802.3at compliant solution for outdoor installations, guaranteeing 30 Watts of power per port and ensuring safe and reliable operation in outdoor environment for two standard PoE data terminal. Unlike Midspans/Injectors, Passive PoE Hubs perform data connectivity between all its ports, and also deliver PoE to all ports. Unlike PoE Switches, PoE passive hubs do not have active switching components that waste power. It allows wireless LAN access points, security network cameras and other IP terminals to receive power, along with data, over standard Ethernet cables, leaving network infrastructure completely unaltered.

The 9002GHO also offers surge protection for the AC and the PoE ports ensuring the indoor equipment is protected from outdoor surges.

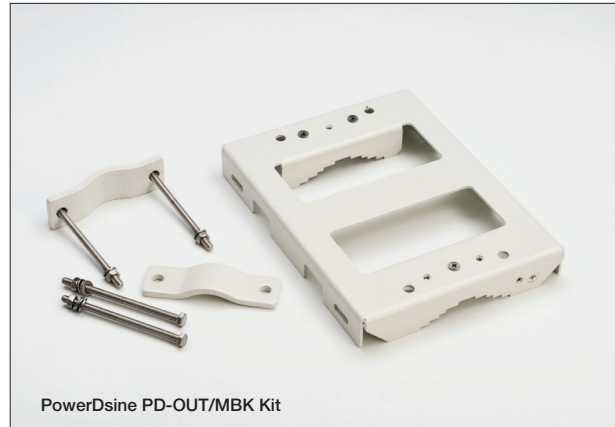
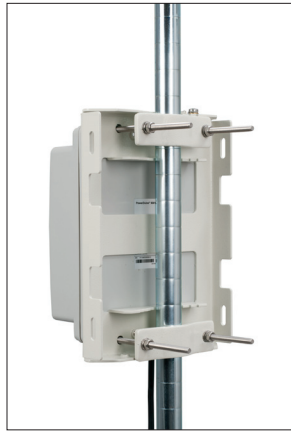
## PD-9002GHO Features

- Outdoor rated: IP66
- Extended temperature range -40°C , +55°C
- IEEE802.3at standard compliant
- Power provided on both RJ45 connectors
- Data connectivity between all RJ45 connectors
- Supports 10/100/1000Mbps data rates
- Plug 'n Play installation (installer does not have to open unit)
- Supports both 802.3af and 802.3at Powered devices
- Includes integral surge protection

## PD-9002GHO Specifications

No. of Ports	2
Pass Through Data Rates	10/100/1000 Mbps
Power over Ethernet Output	Output Power Voltage: 55Vdc User Port Power: 30W guaranteed
Input Power Requirements	AC Input Voltage: 100 to 240 Vac AC Input Current: 2.0A @100-240 Vac AC Frequency: 50 to 60 Hz
Dimensions	214 mm x 150 mm x 70 mm 8.42 in. x 5.90 in. x 2.75 in
Weight	1.65 lbs (750g)
Indicators	No LED indicators
Connectors	Shielded rugged RJ-45 (with gasket)
Environmental Conditions	Operating Ambient Temperature: -40° to 122°F (-40 to 50°C) for 60W -40° to 131°F (-40 to 55°C) for 30W  Operating Humidity: Maximum 95%, Non-condensing  Storage Temperature: -40° to 185°F (-40° to 85°C)  Storage Humidity: Maximum 95%, Non-condensing  Weather Rating: IP66, NEMA 4X
Reliability	MTBF: 150,000 hrs. @25°C
Thermal Rating	45 BTU/Hr (@240VAC)
Warranty	1-year
Regulatory Compliance	IEEE 802.3af (PoE, PoH Type1) IEEE 802.3at (PoE+ including 2-event, PoH Type 2), RoHS Compliant, WEEE Compliant, CE
Electromagnetic Emission & Immunity	FCC Part 15, Class B EN 55022 Class B EN 55024, EN61000-4-5 Class 5 (6kV CM) VCCI
Surge Protection	Meets Surge Protection as specified in GR-1089-CORE Issue 4 ITU-T K.20 6 kV on AC lines
Safety Approvals	UL60950-1 & UL60950-22 GS Mark
Other Standards and Approvals	Dust and water intrusion: EN60529, Level1P66; NEMA 250, Level 4X ASTM B-117 Corrosion Resistance

## PD-9002GHO with outdoor mounting bracket



### Ordering Information

Part Number	Name	Description
PD-9002GHO/AC-NA 802.3at	PowerDsine 9002GHO	2-port, 30W Gigabit PoE outdoor midspan with North American power connector
PD-9002GHO/AC-INTL 802.3at	PowerDsine 9002GHO	2-port, 30W Gigabit PoE outdoor midspan with international power cord
PD-OUT/MBK	PowerDsine OUT MBK	Mounting brackets for outdoor unit

### For More Information

North America  
PowerDsineUSA@microsemi.com

EMEA  
(Europe, Middle East, Africa)  
PowerDsine@microsemi.com

LATAM  
(Latin America)  
PowerDsineLATAM@microsemi.com

APAC  
(Asia Pacific)  
PowerDsineAPAC@microsemi.com



**Microsemi.**

**Power Matters.**

Microsemi Corporation (NASDAQ:MSCC) offers the industry's most comprehensive portfolio of semiconductor and networking technology. PowerDsine® PoE Systems, a Microsemi brand, is the thought leader in energy efficient, high power PoE technology. Learn more at [microsemi.com/powerdsine](http://microsemi.com/powerdsine)