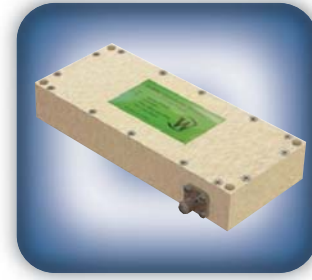




**DECADES AHEAD<sup>®</sup>**  
high power RF devices

**Werlatone<sup>®</sup>, Inc.**

17 Jon Barrett Road Patterson, New York 12563  
T (845) 278 2220      www.werlatone.com  
F (845) 278 3440      sales@werlatone.com



## 2-Way Combiner/Divider

### Model D9853

Frequency: 700 - 2700 MHz

Power: 200 W CW  
2 kW Peak

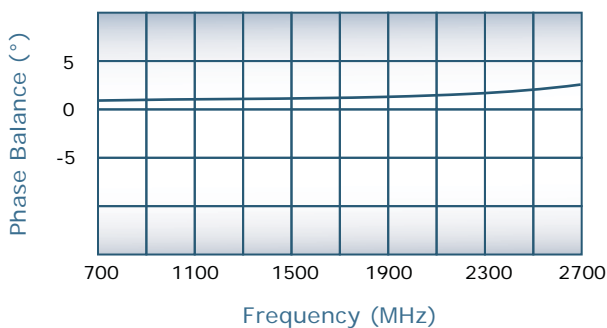
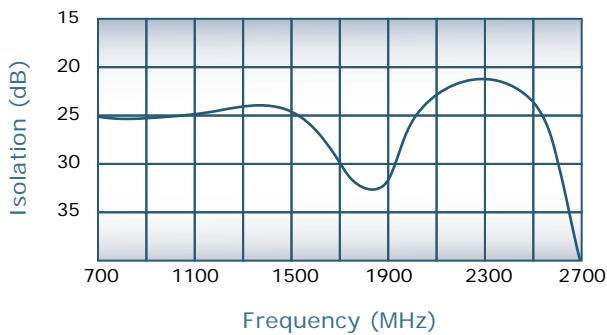
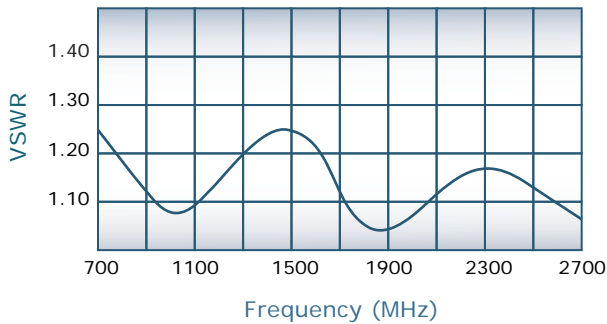
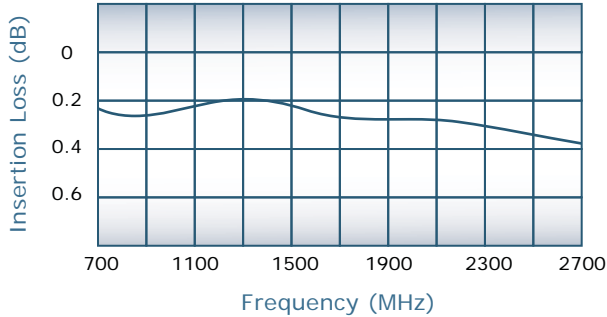
Insertion Loss: 0.5 dB Max.

VSWR: 1.30:1 Max.

Isolation: 20 dB Min.

Phase Balance:  $\pm 5^\circ$  Max.

Amplitude Balance: 0.25 dB Max.



#### Notes

- All specifications guaranteed
- Test data provided with each unit shipped
- Alternate connector configurations upon request
- Weight: 0.75 Pounds
- Operating Temperature: -55°C to +75°C
- Unit will handle 100 Watt split into 2 antennas
- Unit will tolerate input failures on the adjacent port

#### Connector Configurations

Model	J1 (Sum Port)	J2, J3 (Input/Output)
D9853-10	N Female	N Female
D9853-12	N Female	SMA
D9853-102	SMA	SMA

