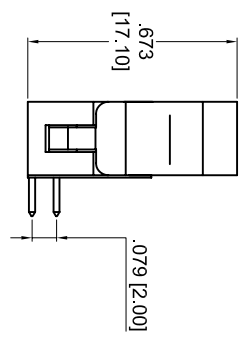
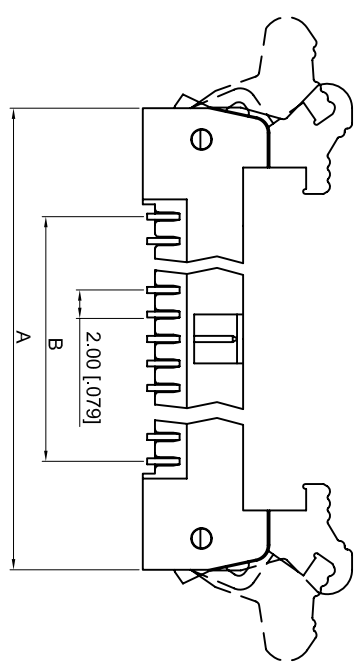
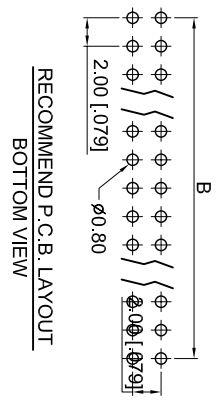
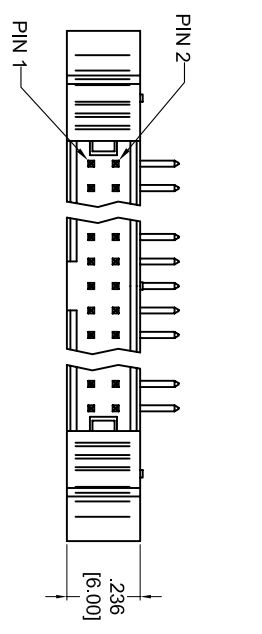


Rev	AWO #	Description	Date	Appr
-		RELEASED	01/26/06	

APPROVED: _____
 DATE: _____ TITLE: _____



Number Of Position	DIMENSIONS	
	A	B
10	25.70[1.012]	8.00[0.315]
12	27.70[1.091]	10.00[0.394]
14	29.70[1.169]	12.00[0.472]
16	31.70[1.248]	14.00[0.551]
20	35.70[1.406]	18.00[0.709]
22	37.70[1.485]	20.00[0.787]
24	39.70[1.563]	22.00[0.866]
26	41.70[1.642]	24.00[0.945]
30	45.70[1.799]	28.00[1.102]
32	47.70[1.878]	30.00[1.181]
34	49.70[1.957]	32.00[1.260]
40	55.70[2.193]	38.00[1.496]
44	59.70[2.350]	42.00[1.654]
50	65.70[2.587]	48.00[1.890]
68	83.70[3.295]	66.00[2.598]

SPECIFICATIONS:

Material: Insulator: PBT, glass reinforced, rated UL 94V-0
 Insulator color: Black
 Contacts: Copper Alloy
 Plating: Gold Flash over Nickel underplate overall
 Electrical: Operating voltage: 250 VAC max
 Current rating: 1 Amps max
 Insulation resistance: 1000 Mohms min @ 500 VDC
 Dielectric withstand voltage: 500 VAC for 1 minute
 Temperature Rating: Operating temperature: -40C to +85C
 Environmental: Lead free, RoHS compliant.
 Recommended soldering temp: 235 for 5 sec.

A

ADAM TECH

909 Rahway Avenue, Union, NJ 07083
 Phone: 908-687-5000 Fax: 908-687-5710

2MM LATCHING BOX HEADER, RIGHT
 ANGLE, PCB, GOLD PLATED

UNLESS OTHERWISE SPECIFIED ALL DIMENSIONS ARE MM [INCHES]	
TOLERANCES: EXCEPT AS NOTED	
INCHES	HOLDS
.X ± .10	ØXX ± .10
.XX ± .020	ØXXX ± .015
.XXX ± .015	ØXXXX ± .010
APPROVALS	DATE
DRAWN	SS
CHECKED	01/26/06
APPROVED	

SIZE	PART NO.	REV.
X	2MHR-XX-HUA-S	-
REF:	SCALE: NTS	SHEET 1 OF 1

6 5 4 3 2 1