

6

5

4

3

2

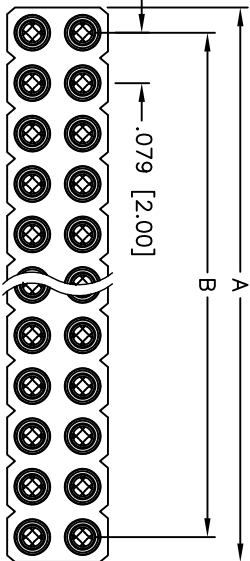
1

Rev	AWO #	Description	Date	Appr
-		RELEASED	4/16/10	

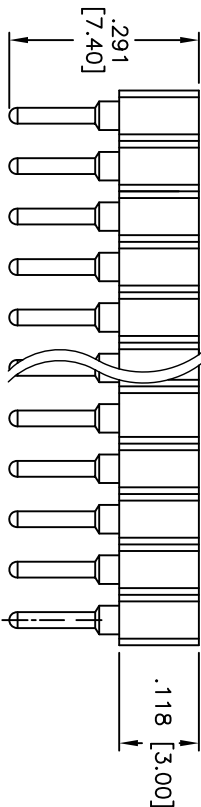
APPROVED: _____

DATE: _____ TITLE: _____

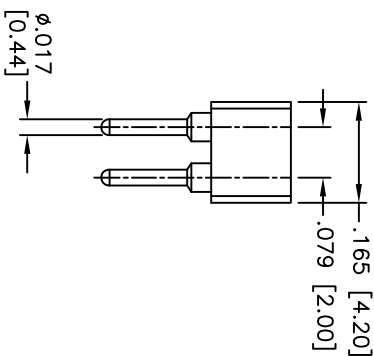
D



C



B



B

SPECIFICATIONS:

Material:

Insulator: Thermoplastic, Glass reinforced, rated UL 94V-0

Insulator color: Black

Contacts: BeCu

Sleeve: Brass

Plating:

Inner contact: Gold flash over Nickel underplate

Outer sleeve: Tin over Copper underplate overall

Electrical:

Current rating: 3 Amp

Contact resistance: 4 mohms max

Temperature Rating:

Operating temperature: -40°C to +105°C

Environmental:

Lead free, RoHS compliant

Recommended soldering temp: 235°C for 5 seconds

Positions: 2 thru 40
A = .079 [2.00] x No. of Positions
B = .079 [2.00] x No. of Spaces

A

A



ADAM TECH

909 Rahway Avenue, Union, NJ 07083

Phone: 908-687-5000 Fax: 908-687-5710

TITLE
.079 [2.00] MACHINED FEMALE HEADER,
DUAL ROW, STRAIGHT, GOLD/TIN PLATED

SIZE PART NO. 2SMC-2-XX-1-GT

SIZE PART NO. 2SMC-2-XX-1-GT

UNLESS OTHERWISE SPECIFIED ALL DIMENSIONS ARE INCHES [MM] TOLERANCES: EXCEPT AS NOTED INCHES			HOLE	
.X	± .10	ØX	± .10	
.XX	± .020	ØXX	± .015	
.XXX	± .015	ØXXX	± .010	
APPROVALS			DATE	
DRAWN	DY		4/16/10	
CHECKED				
APPROVED				

REV.	REV.
-	-

6

5

4

3

2

1