



CSS0638P Series SMD WIRE WOUND POWER INDUCTORS (SHIELDED)

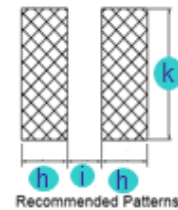
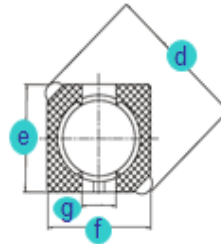
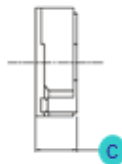
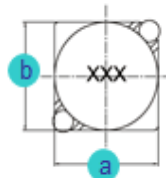
Rev. A

A. Electrical Specifications:

P/N	Marking	Inductance (μH)	Test Freq. (KHz)	DCR Max. (mΩ)	Rated Current (A)
CSS0638P-3R3N	3R3	3.3	10	20	3.50
CSS0638P-5R0N	5R0	5.0	10	24	2.90
CSS0638P-6R2N	6R2	6.2	10	27	2.50
CSS0638P-7R4N	7R4	7.4	10	31	2.30
CSS0638P-8R7N	8R7	8.7	10	34	2.20
CSS0638P-100N	100	10	10	38	2.00
CSS0638P-120N	120	12	10	53	1.70
CSS0638P-150N	150	15	10	57	1.60
CSS0638P-180N	180	18	10	92	1.50
CSS0638P-220N	220	22	10	96	1.30
CSS0638P-270N	270	27	10	109	1.20
CSS0638P-330N	330	33	10	124	1.10
CSS0638P-390N	390	39	10	138	1.00
CSS0638P-470N	470	47	10	155	0.95
CSS0638P-560N	560	56	10	202	0.85
CSS0638P-680N	680	68	10	234	0.75
CSS0638P-820N	820	82	10	324	0.70
CSS0638P-101N	101	100	10	358	0.65

B. Dimensions: mm (Inch)

Series	a	b	c	d	e	f	g	h	i	k
CSS0638P	6.7 (0.264)	6.7 (0.264)	4.0 (0.157)	9.5 (0.374)	6.5 (0.256)	6.5 (0.256)	2.0 (0.079)	2.65 (0.104)	2.0 (0.079)	7.3 (0.287)
Tol.	±0.3 (0.012)	±0.3 (0.012)	Max.	Max.	Typ.	Typ.	Typ.	Typ.	Typ.	Typ.



C. General Information:

1. CSS0638P-xxx_, "CSS0638P" = P/N, "xxx" = Inductance, "_" = Tolerance.
2. Tolerance "_": N: ± 30%, M: ± 20%, L: ± 15%
3. Operating temperature range: -30°C to +100°C (Including self-generated heat).
4. Storage temperature: -40°C to +85°C.
5. Inductance measured using the HP4284A and Chroma1320 & 3302.
6. DCR measured using Chroma 16502 milliohm meter.
7. Inductance drop no more than 35% of initial value at rated current, temperature rise Δt < 40°C
8. Inductance and Current range: From 3.3μH (3.50A) to 100.0 μH (0.65A).
9. MSL: Level 1.

D. Applications:

1. Game Consoles
2. Set Top Boxes
3. Cables Modems
4. Computers
5. Mobile Communication Devices (Cell Phones, Radios, etc.)
6. PDA, LCD, DVD, BRP, HD.

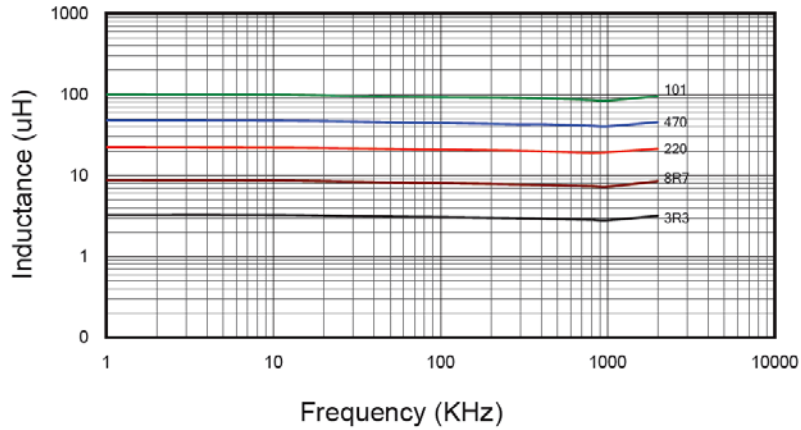


CSS0638P Series SMD WIRE WOUND POWER INDUCTORS (SHIELDED)

Rev. A

E. Characteristics Curve:

Inductance vs. Frequency



Inductance vs. DC Current

