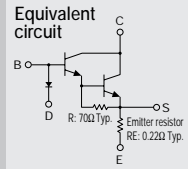


Built-in temperature compensation diodes
Built-in emitter resistor
Darlington

SAP10N



(Complement to type SAP10P)

Application: Audio

■ Absolute maximum ratings (Ta=25°C)

Symbol	Ratings	Unit
VCBO	150	V
VCEO	150	V
VEBO	5	V
IC	12	A
IB	1	A
PC	100 (Tc=25°C)	W
Di IF	10	mA
Tj	150	°C
Tstg	-40 to +150	°C

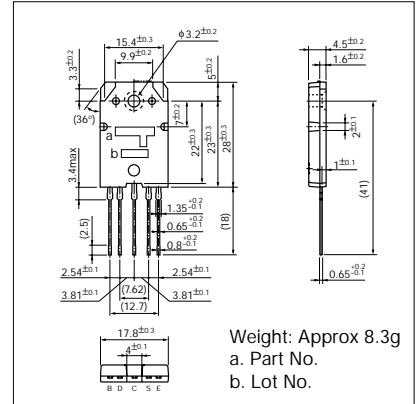
■ Electrical Characteristics (Ta=25°C)

Symbol	Conditions	Ratings			Unit
		min	typ	max	
ICBO	V _{CB} = 150V			100	μA
IEBO	V _{EB} = 5V			100	μA
VCEO	I _C = 30mA	150			V
hFE *	V _{CE} = 4V, I _C = 7A	5000		20000	
VCE(sat)	I _C = 7A, I _B = 7mA			2.0	V
VBE(sat)	I _C = 7A, I _B = 7mA			2.5	V
VBE	V _{CE} = 20V, I _C = 40mA		1200		mV
Di VF	I _F = 2.5mA		705		mV
RE	I _E = 1A	0.176	0.22	0.264	Ω

*hFE Rank \bar{O} (5000 to 12000), Y (8000 to 20000)

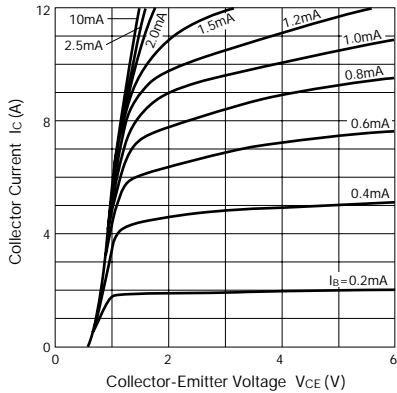
External Dimensions

(Unit: mm)

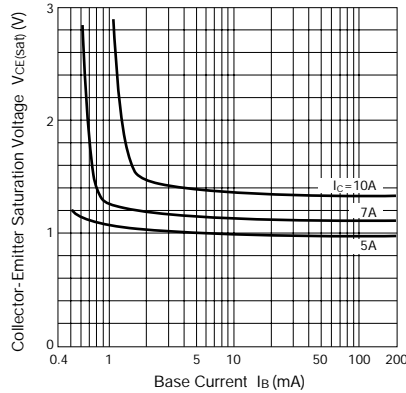


Weight: Approx 8.3g
a. Part No.
b. Lot No.

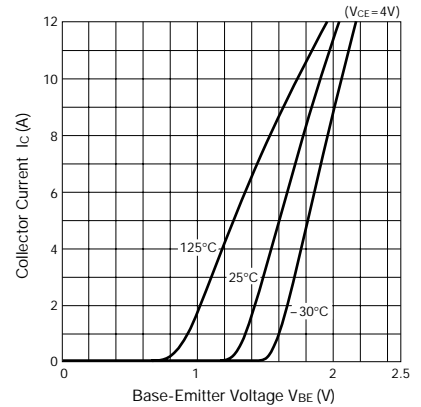
I_C - V_{CE} Characteristics (Typical)



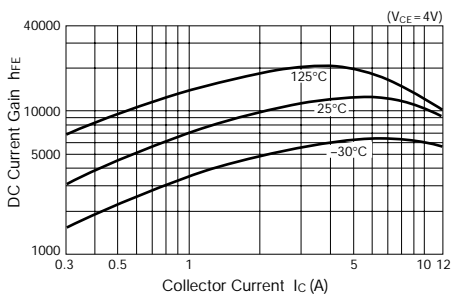
V_{CE(sat)} - I_B Characteristics (Typical)



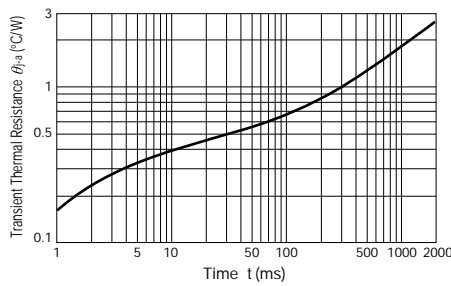
I_C - V_{BE} Temperature Characteristics (Typical)



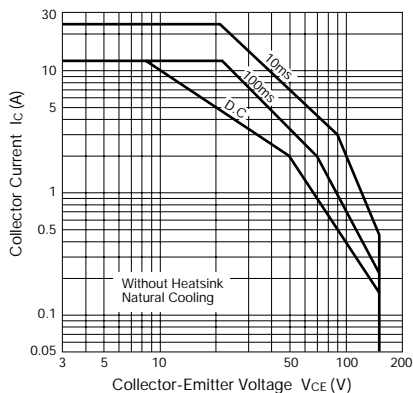
h_{FE} - I_C Characteristics (Typical)



θ_{j-a} - t Characteristics



Safe Operating Area (Single Pulse)



P_C - T_a Derating

