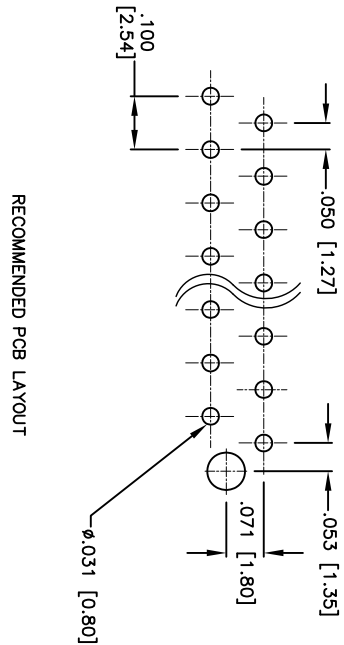
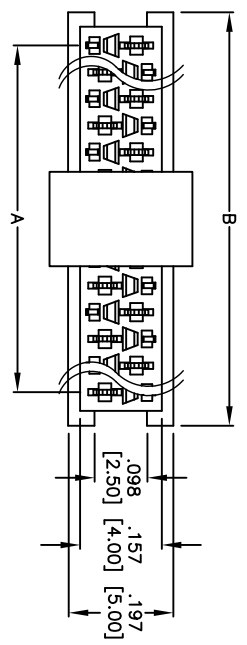
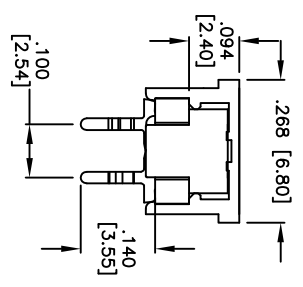
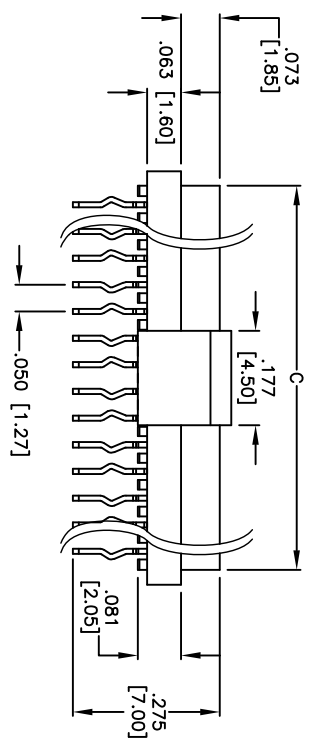


Rev	AWO #	Description	Date	Appr
-		RELEASED	9/16/10	

APPROVED: \_\_\_\_\_  
 DATE: \_\_\_\_\_ TITLE: \_\_\_\_\_



RECOMMENDED PCB LAYOUT



PACKAGED ON TAPE & REEL

A = .050 [1.27] X # of spaces  
 B = .050 [1.27] X # of positions + .126 [3.19]  
 C = .050 [1.27] X # of positions + .070 [1.79]

**SPECIFICATIONS:**

**Material:**  
 Insulator: Hi-temp thermoplastic, rated UL 94V-0  
 Insulator color: Red  
 Contacts: Phosphor Bronze  
 Plating:  
 Tin over Copper underplate overall.  
**Electrical:**  
 Operating voltage: 30 VAC max  
 Current rating: 1.0 Amps max  
 Contact resistance: 20 mohms max  
 Insulation resistance: 1000 Mohms min  
 Dielectric withstanding voltage: 500 VAC for 1 minute  
**Temperature Rating:**  
 Operating temperature: -40°C to +105°C  
**Environmental:**  
 Lead free, RoHS compliant.  
 Recommended soldering temp: 260°C for 5 sec.

**ADAM TECH**  
 909 Rahway Avenue, Union, NJ 07083  
 Phone: 908-687-5000 Fax: 908-687-5710

MINI FLEX FEMALE, THRU HOLE  
 TIN PLATING

UNLESS OTHERWISE SPECIFIED ALL DIMENSIONS ARE MM [INCHES] TOLERANCES: EXCEPT AS NOTED INCHES		TITLE	
X .XX ± .10	ØXX ± .10	909 Rahway Avenue, Union, NJ 07083	
.XX ± .020	ØXX ± .015	Phone: 908-687-5000 Fax: 908-687-5710	
.XXX ± .015	ØXXX ± .010	MINI FLEX FEMALE, THRU HOLE	
APPROVALS		DATE	
DRAWN	AY	9/16/10	
CHECKED	VW	9/16/10	
APPROVED			
SIZE	PART NO.	TITLE	
X	MPF-XX-V-T-PP-TR	MINI FLEX FEMALE, THRU HOLE	
REF:	S00036T	SCALE:	NTS
SHEET 1 OF 1		REV: -	