

PLEASE CHECK WWW.MOLEX.COM FOR LATEST PART INFORMATION

Part Number: [0887667600](#)
Status: **Active**
Overview: [lfh](#)
Description: 1.27mm (.050") Pitch LFH™ (M)-to-Two DVI_D (M) Adapter Cable Assemblies, 2.0m (6.56') Length

Documents:

[Drawing \(PDF\)](#) [RoHS Certificate of Compliance \(PDF\)](#)

General

Product Family Cable Assemblies
 Series [88744](#)
 Connector to Connector LFH™-to-DVI-D
 Obsolete Date 2003/01/01
 Overview [lfh](#)
 Product Name LFH™

Physical

Cable Length 2.0m (6.56')
 Circuits (Loaded) 60
 Color - Resin Black
 Gender Male-Male
 Lock to Mating Part Yes
 Material - Metal Aluminum, Phosphor Bronze
 Material - Plating Mating Gold, n/a
 Material - Plating Termination Tin
 Material - Resin High Temperature Thermoplastic, Polyester
 Packaging Type Bag
 Pitch - Mating Interface (in) 0.050 In
 Pitch - Mating Interface (mm) 1.27 mm
 Plating min: Mating (µin) 10, 75
 Plating min: Mating (µm) 0.25, 1.875
 Plating min: Termination (µin) 100, 150
 Plating min: Termination (µm) 2.5, 3.80
 Single Ended No
 Termination Interface: Style N/A, Through Hole
 Wire Insulation Diameter N/A
 Wire Size AWG 30
 Wire/Cable Type Round

Electrical

Impedance 100 ohms
 Shielded Yes
 Voltage - Maximum 30V AC

Material Info

Reference - Drawing Numbers

Sales Drawing SD-88744-028

EU RoHS

Not RoHS Compliant
REACH SVHC
Not Reviewed
Halogen-Free
Status
Not Reviewed

China RoHS



Need more information on product environmental compliance?

Email productcompliance@molex.com
 For a multiple part number RoHS Certificate of Compliance, [click here](#)

Please visit the [Contact Us](#) section for any non-product compliance questions.

Search Parts in this Series
[88744Series](#)

6

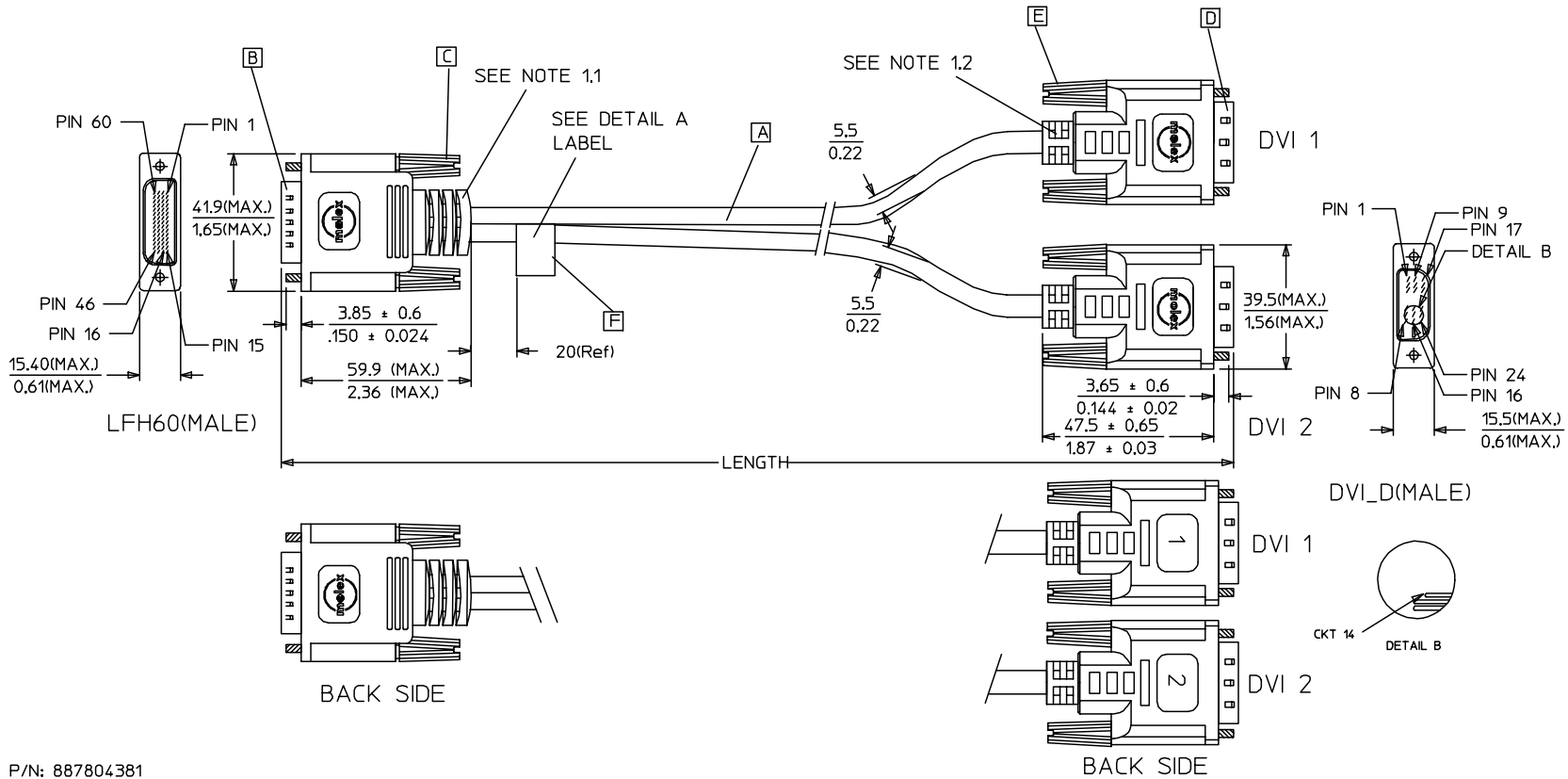
5

4

3

2

1



P/N: 887804381

MOLEX P/N:
887-6676-XX
REV.B

DETAIL A

EC NO. DRWN: PDAI 04/06/11 CHK: APPR:	EC NO. DRWN: METTLE03/03/06 CHK: APPR:	EC NO. DRWN: MACKY 02/08/01 CHK: APPR:	EC NO. DRWN: MACKY 02/07/03 CHK: APPR:	DESCRIPTION REV	QUALITY SYMBOLS	GENERAL TOLERANCES: (UNLESS SPECIFIED)		SCALE N.S.T	DESIGN UNITS <input checked="" type="checkbox"/> mm <input type="checkbox"/> INCH	THIRD ANGLE PROJECTION	DIMENSIONS: <input type="checkbox"/> mm <input type="checkbox"/> INCH <input type="checkbox"/> mm ONLY		SHT	REV
					MAJOR ▼ = 0	mm	INCH	DRAWN BY & DATE METTLE 03/03/06	TITLE: LFH60(M) TO TWO DVI-D(M) CABLE ASS'Y	<input type="checkbox"/> mm <input type="checkbox"/> INCH <input type="checkbox"/> mm ONLY	REVISION ON CAD ONLY			
C	B1	B	A		CRITICAL ▽ = 5	4 PLACES	ANGULAR: \		CHECKED BY & DATE MACKY 03/03/06		MOLEX INCORPORATED			
						3 PLACES			APPROVED BY & DATE T.WONG 03/03/06		MATERIAL NO. SEE TABLE A	DRAWING NO. SD-88744-028	SHEET NO. 1 OF 3	SIZE A4
						2 PLACES			CAD FILENAME S88744BB.S01		THIS DRAWING CONTAINS INFORMATION THAT IS PROPRIETARY TO MOLEX INCORPORATED AND SHOULD NOT BE USED WITHOUT WRITTEN PERMISSION.			
						1 PLACE								

WBORD_A.BOR REV A
97/05/14 LEVEL 3

6

5

4

3

2

1

WIRING DIAGRAM:

SHIELD	SHIELD	GROUND
PIN 24	PIN 32	DVI1_TXC-
PIN 23	PIN 31	DVI1_TXC+
PIN 22	PIN 57	DVI1_TXC RTN
PIN 19	PIN 33	DVI1_TX0 RTN
PIN 18	PIN 29	DVI1_TX0+
PIN 17	PIN 30	DVI1_TX0-
PIN 16	PIN 36	DVI1_HPD
PIN 15	PIN 54	SYNCS
PIN 14	PIN 5	+5V
PIN 11	PIN 34	DVI1_TX1 RTN
PIN 10	PIN 27	DVI1_TX1+
PIN 9	PIN 28	DVI1_TX1-
PIN 7	PIN 7	DVI1_SDA
PIN 6	PIN 6	DVI1_SCL
PIN 3	PIN 35	DVI1_TX2 RTN
PIN 2	PIN 25	DVI1_TX2+
PIN 1	PIN 26	DVI1_TX2-
DVI 1	LFH60	CABLE FUNCTION

SHIELD	SHIELD	GROUND
PIN 24	PIN 44	DVI2_TXC-
PIN 23	PIN 45	DVI2_TXC+
PIN 22	PIN 49	DVI2_TXC RTN
PIN 19	PIN 43	DVI2_TX0 RTN
PIN 18	PIN 16	DVI2_TX0+
PIN 17	PIN 17	DVI2_TX0-
PIN 16	PIN 40	DVI2_HPD
PIN 15	PIN 52	SYNCS
PIN 14	PIN 11	+5V
PIN 11	PIN 42	DVI2_TX1 RTN
PIN 10	PIN 18	DVI2_TX1+
PIN 9	PIN 19	DVI2_TX1-
PIN 7	PIN 9	DVI2_SDA
PIN 6	PIN 10	DVI2_SCL
PIN 3	PIN 41	DVI2_TX2 RTN
PIN 2	PIN 20	DVI2_TX2+
PIN 1	PIN 21	DVI2_TX2-
DVI 2	LFH60	CABLE FUNCTION

EC NO.	DRWN: PDAI	04/06/11	EC NO.	DRWN: METTLE	03/03/06	EC NO.	DRWN: MACKY	02/08/01	EC NO.	DRWN: MACKY	02/07/03	QUALITY SYMBOLS	GENERAL TOLERANCES: (UNLESS SPECIFIED)	SCALE N.S.T	DESIGN UNITS <input checked="" type="checkbox"/> mm <input type="checkbox"/> INCH	THIRD ANGLE PROJECTION	DIMENSIONS: <input checked="" type="checkbox"/> mm <input type="checkbox"/> INCH <input type="checkbox"/> mm ONLY	SHT	REV												
C	CHK: APPR:		B1	CHK: APPR:		B	CHK: APPR:		A	CHK: APPR:		MAJOR ▼ = 0 CRITICAL ▽ = 5	<table border="1"> <tr><td>4 PLACES</td><td>±0.</td><td>±.</td></tr> <tr><td>3 PLACES</td><td>±0.</td><td>±.</td></tr> <tr><td>2 PLACES</td><td>±0.</td><td>±.</td></tr> <tr><td>1 PLACE</td><td>±0.</td><td>±.</td></tr> </table>	4 PLACES	±0.	±.	3 PLACES	±0.	±.	2 PLACES	±0.	±.	1 PLACE	±0.	±.		<input checked="" type="checkbox"/> mm <input type="checkbox"/> INCH		<input checked="" type="checkbox"/> mm <input type="checkbox"/> INCH <input type="checkbox"/> mm ONLY		
4 PLACES	±0.	±.																													
3 PLACES	±0.	±.																													
2 PLACES	±0.	±.																													
1 PLACE	±0.	±.																													
												DRAWN BY & DATE METTLE 03/03/06		TITLE: LFH60(M) TO TWO DVI-D(M) CABLE ASS'Y																	
												CHECKED BY & DATE MACKY 03/03/06																			
												APPROVED BY & DATE T.WONG 03/03/06		MOLEX INCORPORATED																	
												CAD FILENAME S88744BB.S02		MATERIAL NO. SEE TABLE A		DRAWING NO. SD-88744-028		SHEET NO. 2 OF 3													
												THIS DRAWING CONTAINS INFORMATION THAT IS PROPRIETARY TO MOLEX INCORPORATED AND SHOULD NOT BE USED WITHOUT WRITTEN PERMISSION.								SIZE A4											

6

5

4

3

2

1

MATERIAL LIST:

F	LABEL		I
E	DVI THUMB SCREW (4-40UNC)		4
D	DVI_D SINGLE CHANNEL G/F CONNECTOR		2
C	LFH SCREW (4-40UNC)		2
B	LFH-60 PLUG ASSEMBLY		1
A	DVI-D SINGLE LINK CABLE		2
ITEM	DESCRIPTION	L	QTY.

TABLE A

88766-7610	LFH60(M) TO TWO DVI-D(M) S/L CABLE 3M	3000±60
88766-7600	LFH60(M) TO TWO DVI-D(M) S/L CABLE 2M	2000±50
MX-P/N	DESCRIPTION	LENGTH

NOTE:1. OVERMOLD SPECIFICATION

1.1 LFH60 BOOT MOLDED WITH BLACK PVC RESIN,UL 94V-0.

1.2 DVI BOOT MOLDED WITH SNOW PVC RESIN,UL 94V-0.

2. MECHANICAL SPECIFICATION

▽2.1 CABLE SHOULD STAND THE PULL FORCE 89-11IN FOR 30 SECONDS WITH NO VISIBLE TERMINATION DAMAGE.

2.2 CABLE SHOULD PASS THE FLEX TEST IN 100 CYCLES AT EACH OF PLANES, PER EIA 364-41, CONDITION 1.

3. PRODUCT ELECTRICAL SPECIFICATION

▽3.1 DIELECTRIC STRENGTH: 500V DC FOR 10mS.

▽3.2 INSULATION RESISTANCE: 100 MEGA Ohms(MIN.).

▽3.3 CONTACT RESISTANCE: 2 Ohms(MAX.).

▽3.4 DIFFERENTIAL LINES CHARACTERISTIC IMPEDANCE: 100±7 Ohms @TDR.

3.5 SIGNALS CROSSTALK(FEXT) : 5% (MAX.) PER ANSI/EIA-364-90.

3.6 SIGNALS INTRA-PAIR SKEW (PER CABLE): <150 ps.

4. CONNECTOR PLATING: AU FLASH.

5.SHORTCIRCUIT AMONG DRAIN WIRES IS ACCEPTABLE.

EC NO.				QUALITY SYMBOLS	GENERAL TOLERANCES: (UNLESS SPECIFIED)	SCALE N.S.T	DESIGN UNITS <input checked="" type="checkbox"/> mm <input type="checkbox"/> INCH	THIRD ANGLE PROJECTION	DIMENSIONS: <input checked="" type="checkbox"/> mm <input type="checkbox"/> INCH <input type="checkbox"/> mm ONLY	SHT	REV	
C	DRWN: PDAI CHK: APPR:	04/06/11		MAJOR ▼ = 0	4 PLACES ±0. ±.							
B1	DRWN: METTLE CHK: APPR:	03/03/06		CRITICAL ▽ = 5	3 PLACES ±0. ±.							
B	DRWN: MACKY CHK: APPR:	02/08/01			2 PLACES ±0. ±.							
A	DRWN: MACKY CHK: APPR:	02/07/03			1 PLACE ±0. ±.							
REV	DESCRIPTION				ANGULAR: ± °	DRAWN BY & DATE METTLE 03/03/06		TITLE: LFH60(M) TO TWO DVI-D(M) CABLE ASS'Y				
						CHECKED BY & DATE MACKY 03/03/06		MOLEX INCORPORATED				
						APPROVED BY & DATE T.WONG 03/03/06		CAD FILENAME S88744BB.S03		MATERIAL NO. SEE TABLE A	DRAWING NO. SD-88744-028	SHEET NO. 3 OF 3
THIS DRAWING CONTAINS INFORMATION THAT IS PROPRIETARY TO MOLEX INCORPORATED AND SHOULD NOT BE USED WITHOUT WRITTEN PERMISSION.										SIZE A4		