

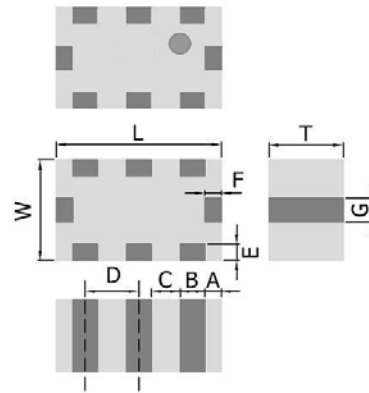
## PRODUCT FEATURES

1. Surface mount balun matched filter with a small size of 2.0 X 1.2 X 0.95 mm, RoHS compliant.
2. Provide high rejection rate and DC bias option.
3. Highly stable under temperature and humidity changes.

## RF CHARACTERISTICS

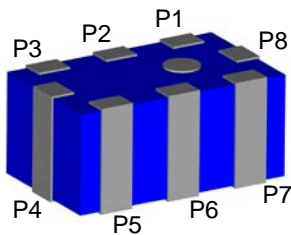
P/N BM2450E0805LT	Specification
Frequency range	2400 - 2500 MHz
Insertion Loss	2.5 dB max
VSWR	2.0 max
Impedance (Unbalanced)	50 $\Omega$
Impedance ( Balanced )	Conjugate to MT5931M/MT6628 chipset
Phase Difference	180° ± 10°
Amplitude Difference	2.0 dB Max
Attenuation ( min.)	35dB @ 824~960 MHz
	32dB @ 1990 MHz
	18dB @ 2170 MHz
	40dB @ 4800-5000MHz
	25dB @ 7200-7500MHz
Operating temperature range	-40°C to +85°C

## PHYSICAL DIMENSIONS



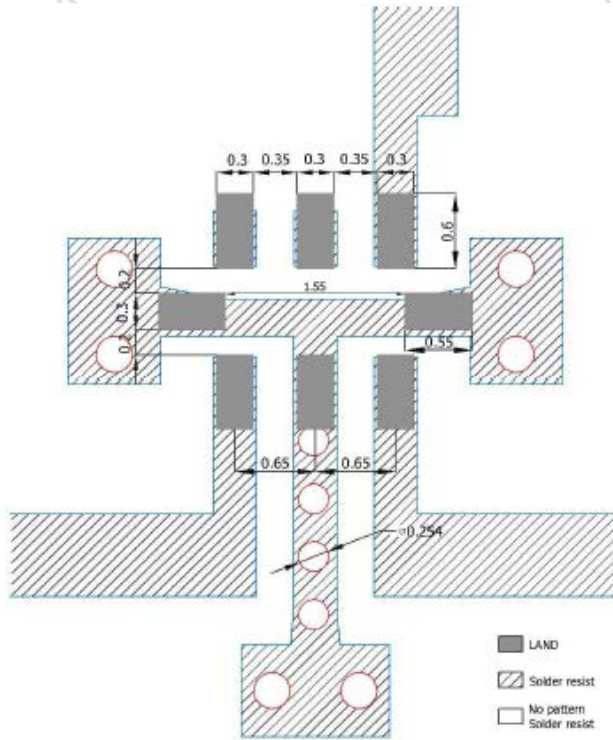
Symbol	Dimension (mm)
L	2.00 ± 0.15
W	1.25 ± 0.10
T	0.95 ± 0.10
A,E,F	0.20 ± 0.15
B	0.30 ± 0.10
C	0.35 ± 0.10
D	0.65 ± 0.10
G	0.30 ± 0.10

## TERMINAL CONFIGURATION



PIN	Definition	PIN	Definition
P1	Unbalanced Port	P5	Balanced Port
P2	DC/NC	P6	GND
P3	NC	P7	Balanced Port
P4	GND	P8	GND

## PCB DESIGN/LAYOUT CONSIDERATION



**Note:**

- Unit in mm
- Design trace width to be 50Ω impedance.

### Typical RF Performance

