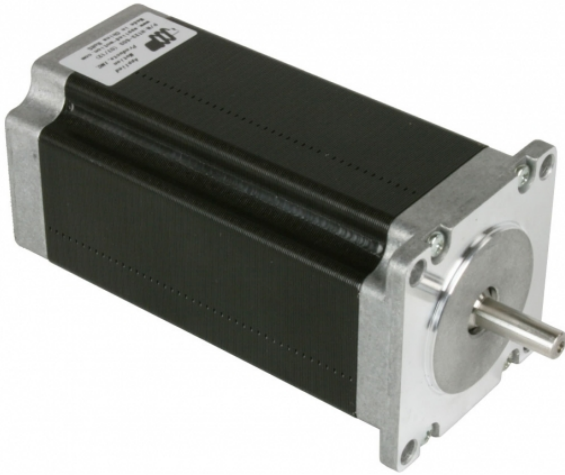


HT23-603

NEMA 23 High Torque Step Motor, 354 oz-in

1pc. - 119.00
50pc. - 89.25



Product Features

- *2-phase hybrid step motor*
- *High torque design*
- *Standard NEMA 23 dimensions*
- *Series or parallel wiring*
- *Optimized for microstepping*



Description

Product Description:







The HT23-603 two-phase stepper motor is suitable for a wide range of motion control applications. Terminated with 8 motor leads, the motor can be connected in a few different ways, including bipolar series and bipolar parallel.

Specifications

Part Number:	HT23-603
Frame Size:	NEMA 23
Motor Type:	High torque
Part Number w/Double Shaft:	HT23-603D
Part Number w/Encoder:	HT23-603D-ZAA
Motor Length:	4.37 inches
Number of Lead Wires:	8
Lead Wire Configuration:	flying leads, no connector
Lead Wire/Cable Length:	18 inches inches
Lead Wire Gauge:	22 AWG
Unipolar Holding Torque:	264 oz-in
Bipolar Holding Torque:	354 oz-in
Step Angle:	1.8 deg
Bipolar Series Current:	2.5 A/phase
Bipolar Series Resistance:	2.0 Ohms/phase
Bipolar Series Inductance:	8.8 mH/phase
Bipolar Parallel Current:	5.0 A/phase
Bipolar Parallel Resistance:	0.5 Ohms/phase
Bipolar Parallel Inductance:	2.2 mH/phase
Unipolar Current:	3.5 A/phase
Unipolar Resistance:	1.0 Ohms/phase
Unipolar Inductance:	2.2 mH/phase
Rotor Inertia:	1.06E-02 oz-in-sec ²
Integral Gearhead:	No
Weight:	3.3 lbs
Storage Temperature:	-30 to 70 °C

Operating Temperature:	-20 to 50 °C
Insulation Class:	Class B (130 °C)
Maximum Radial Load:	17 lbs
Maximum Thrust Load:	3.4 lbs
Shaft Run Out:	0.002 inch T.I.R. max
Radial Play:	0.0008 inch max w/ 1.1 lb load
Perpendicularity:	0.004 inches
Concentricity:	0.002 inches

Downloads

Family Datasheet:	 StepMotorWiring-8-lead-striped.pdf
Datasheet:	http://s3.amazonaws.com/applied-motion-pdf/HT23-603.pdf
2D Drawing:	 HT23-603_RevC.pdf  HT23-603D-ZAA_RevA.pdf
3D Drawing:	 HT23-603.igs  HT23-603D.igs
Speed-Torque Curves:	 StepMtrAppData_HT23-603_RevA.pdf

Pricing

	HT23-603 Part No. w/ Single Shaft	HT23-603D Part No. w/ Double Shaft	HT23-603D-ZAA Part No. w/ Encoder
1pc.	\$119.00	\$119.00	\$245.00
25pc.	\$102.34	\$102.34	\$210.70
50pc.	\$89.25	\$89.25	\$183.75
100pc.	Request a Quote for 100+ piece pricing.		