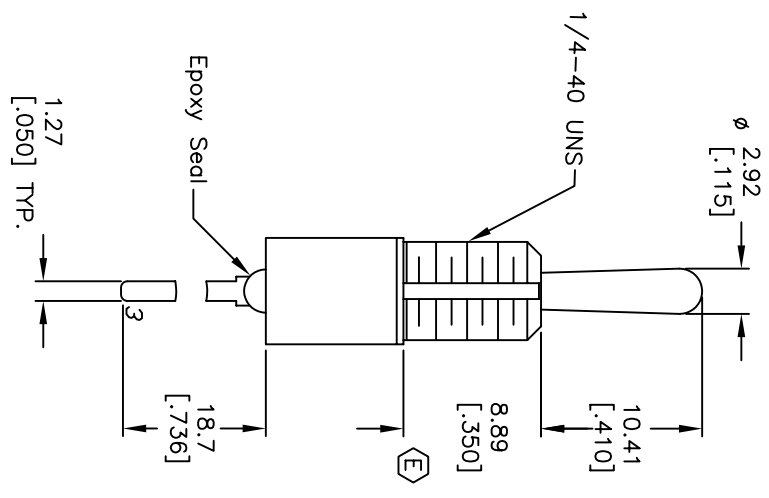
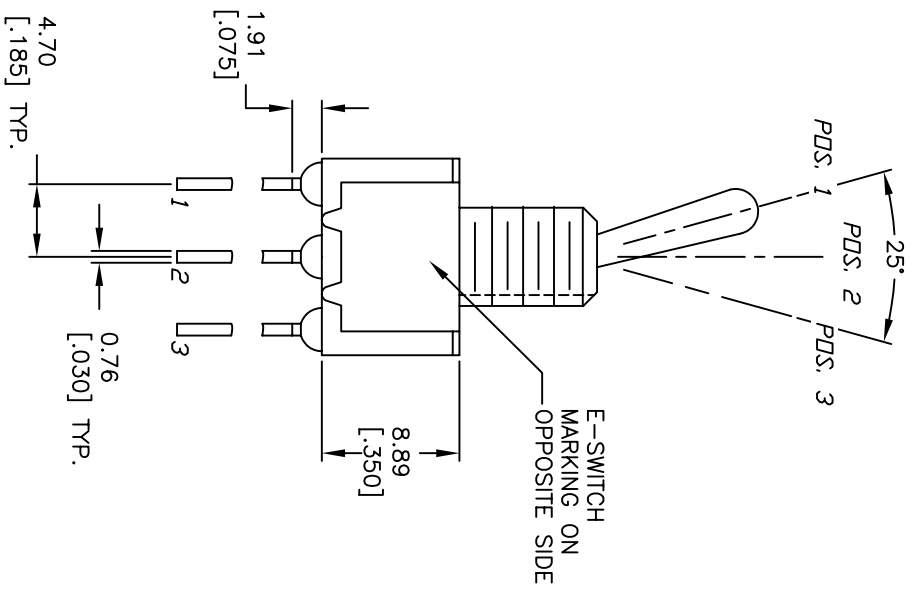
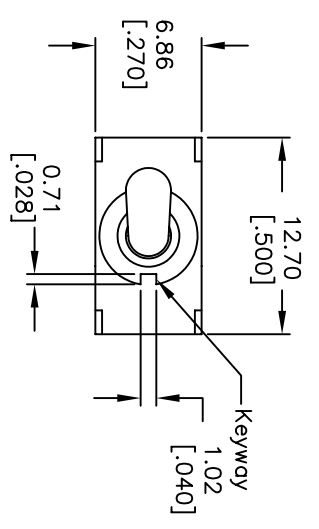


CIRCUIT: SPDT

SWITCH FUNCTION		
PDS. 1	PDS. 2	PDS. 3
DN	NONE	DN
2-3	OPEN	2-1

NOTES:

1. ALL DIMENSIONS IN MM [INCH]
2. GENERAL TOLERANCE: X.X=±0.4
X.XX=±0.25
3. TERM. NOS. FOR REF. ONLY
4. RATING: 0.4 (VA) max. @20V AC or DC
5. FIXED TERM. & MOVING CONTACT: Copper Alloy W/Gold Plate over Ni Plate.
6. ELECTRICAL LIFE: 50,000 make-and-break cycles at full load.
7. INSULATION RESISTANCE: 1,000M ohm min.
8. DIELECTRIC STRENGTH: 1000V RMS @sea level
9. OPERATING TEMP.: -30°C to 85°C
10. 2002/95/EC (ROHS) COMPLIANT



REV.	ECN No.	DESCRIPTION	DATE	CHKD
F	15483	ADD ROHS NOTE	11/1/05	PH
E	14351	CORRECT BUSHING LENGTH	9/27/04	AR
D	13412	CORRECT TERMINAL LENGTH	8/29/03	AR
C	12137	REMOVED P.C.B. LAYOUT	5/9/02	CJB
B	11476	REVISED P.C.B. DIM	5/21/01	CJB

SCALE	DATE	DR	DWG	REV
2:1	5/14/01	CJB	T110014	F

TITLE: 100SP11B1MSIRE

E-SWITCH®

THE INFORMATION CONTAINED IN THIS DOCUMENT IS PROPRIETARY TO E-SWITCH AND IS NOT TO BE COPIED OR TRANSFERRED