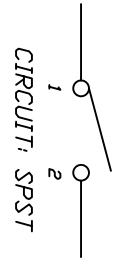
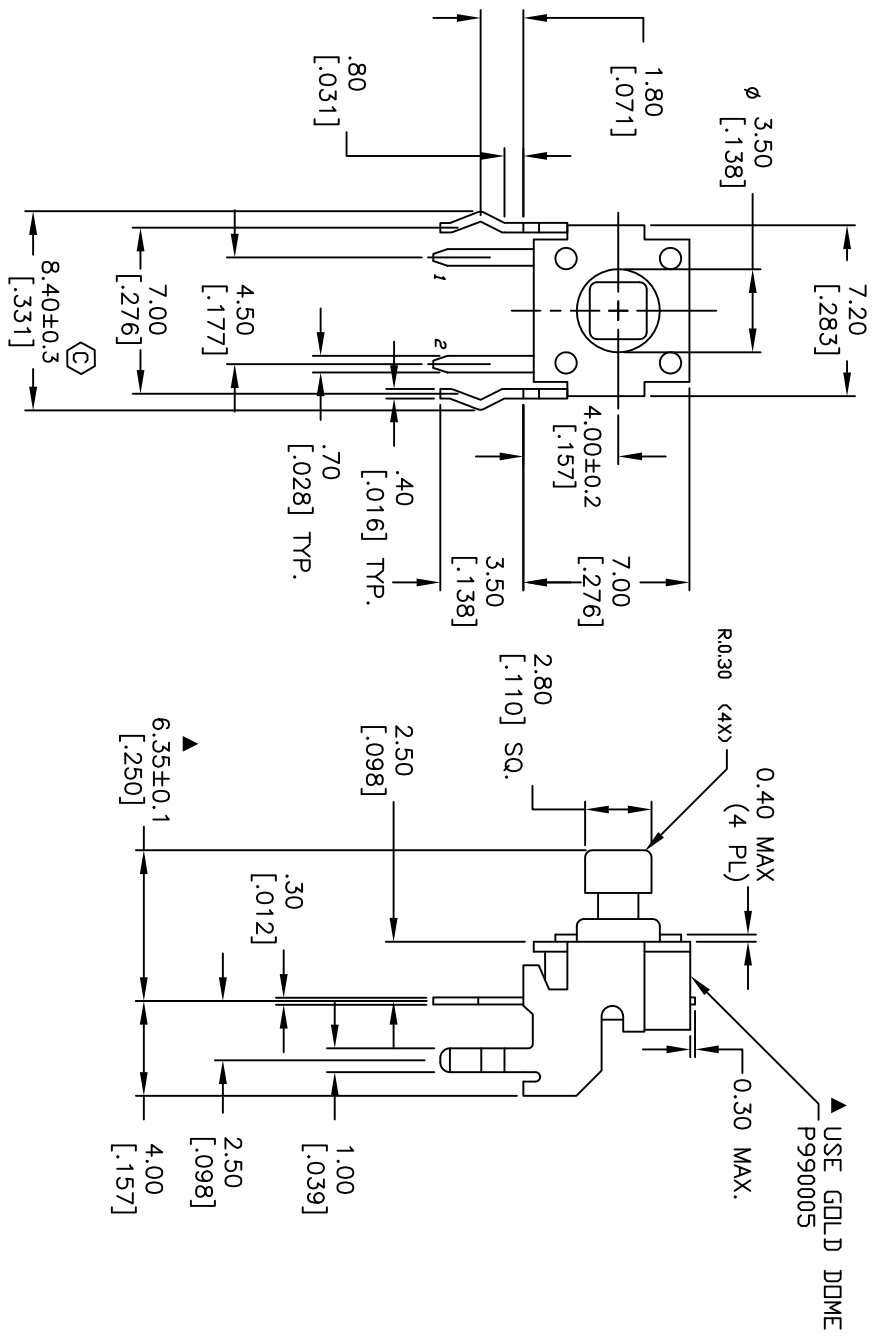
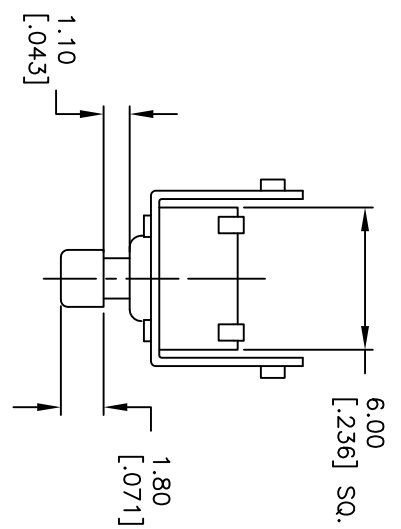


RECOMMENDED P.C.B. LAYOUT

SCALE 4:1



- NOTES:
1. ALL DIMENSIONS IN MM [INCH]
 2. GENERAL TOLERANCE: X.X=±0.4 X.XX=±0.25
 3. TERM. NOS. FOR REFERENCE ONLY.
 4. RATINGS: 12VDC, 50mA
 5. OPERATING FORCE: 160±50gf
 6. TRAVEL: 0.25±0.1mm
 7. CONTACT RESISTANCE: 100 MILLI Ω Max.
 8. DIELECTRIC STRENGTH: 250V RMS min.
 9. INSULATION RESISTANCE: 100 Mega Ω min.
 10. ELECTRICAL LIFE: 100,000 CYCLES min.
 11. ▲ DENOTES CRITICAL PARAMETER
 12. HOUSING COLOR: BLACK
 13. 2002/95/EC (ROHS) COMPLIANT.



C	18313	LEG TOLERANCE WAS +/- 0.1	11/11/08	CT
B	16082	ADD GOLD DOME NOTE	6/5/06	CT
REV.	ECN NO.	DESCRIPTION	DATE	CHKD

TITLE		SCALE	DATE	DR	DWG	REV
TL1105JA F160 R		3:1	11/11/08	BLR	P010048	C

THE INFORMATION CONTAINED IN THIS DOCUMENT IS PROPRIETARY TO E-SWITCH AND IS NOT TO BE COPIED OR TRANSFERRED