

16-Port 10/100 Rackmount Switch



FSW-1650

H/W Version: 4

Product Overview

The FSW-1650 switch provides an ideal solution for small businesses that demand a reliable network switch that provides a high bandwidth interface between file servers and workgroups, departments and offices.

Advanced Networking Features

The LevelOne FSW-1650 is a wire-speed, non-blocking 16 port Fast Ethernet Unmanaged Switch with an internal power supply. It provides a network with an 8K MAC address table, 3.2Gbps backplane throughput, asymmetrical flow-control support for full-duplex network connectivity, auto-negotiation and Auto-MDIX.

The 16-port Fast Ethernet Switch utilizes packet-store-and forwarding switching for error-free data transmissions and IEEE802.3x backpressure flow

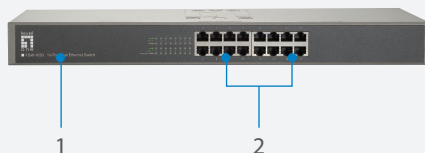
control to control data flow between the sending and receiving nodes as well as to prevent any data packet loss.

Compact Design

The FSW-1650 is a compact designed network switch. Users can place the switch on any desktop area or mount it in a 19-inch server rack or cabinet by using the included rack-mounting accessory kit.

Quick Configuration and Easy Maintenance

The LevelOne FSW-1650 does not require any software configuration. It is Plug-and-Play enabled for quick set-up and immediate use within the Local Area Network. The 16 port Faster Ethernet Switch is equipped with a full range of LEDs for instant error detection, networking monitoring and network troubleshooting.



1. LEDs
2. 10/100Mbps Ports
3. Internal Power Socket

Key Features

- 16 10/100Mbps NWay ports
- Fully compliant with IEEE 802.3az standard
- Supports 8K MAC address table
- Supports 3.2Gbps backplane throughput
- Supports IEEE 802.1P QoS (WRR 8:1)
- Accessory kit for mounting into a 19-inch server rack
- Supports back-pressure and flow control
- Store-and-forward architecture
- Internal power supply

Related Products



FSW-0511
5-Port Fast Ethernet Switch



FNC-0109TX
10/100 Mbps Ethernet Card

Technical Specifications

Network Interface

Standards

IEEE 802.3 10Base-T Ethernet
 IEEE 802.3u 100Base-TX Fast Ethernet
 IEEE 802.3x Flow Control and Back Pressure
 IEEE 802.1P Quality of service
 IEEE802.3az Energy Efficient Ethernet

Network Interface

16x 10/100 Mbps RJ-45 ports

Network Cables

10Base-T: 2-pair UTP/STP Cat.3/4/5, Up to 100 m
 100Base-TX: 2-pair UTP/STP Cat. 5, Up to 100 m

Data Transfer Rate

Ethernet: 10Mbps (Half-duplex)
 Ethernet: 20Mbps (Full-duplex)
 Fast Ethernet: 100Mbps (Half-duplex)
 Fast Ethernet: 200Mbps (Full-duplex)

Switching Protocol

CSMA/CD

Switch Architecture

Store-and-Forward

Backplane Throughput

3.2Gbps

MAC Address Table

8K entries with Auto learning function

Memory

Packet Buffer: 160Kbytes

Status Indicators

Link/ Act LED
 Power LED
 100Mbps LED

Physical Specifications

Internal Power Supply

100 ~ 240V AC, 50/60Hz

Power Consumption

6.2 Watts

Temperature

Operating: 0°C ~ 40°C
 Storage: -40°C ~ 70°C

Humidity

Operating: 10% ~ 90% (Non-condensing)
 Storage: 5% ~ 95% (Non-condensing)

Dimension & Weight

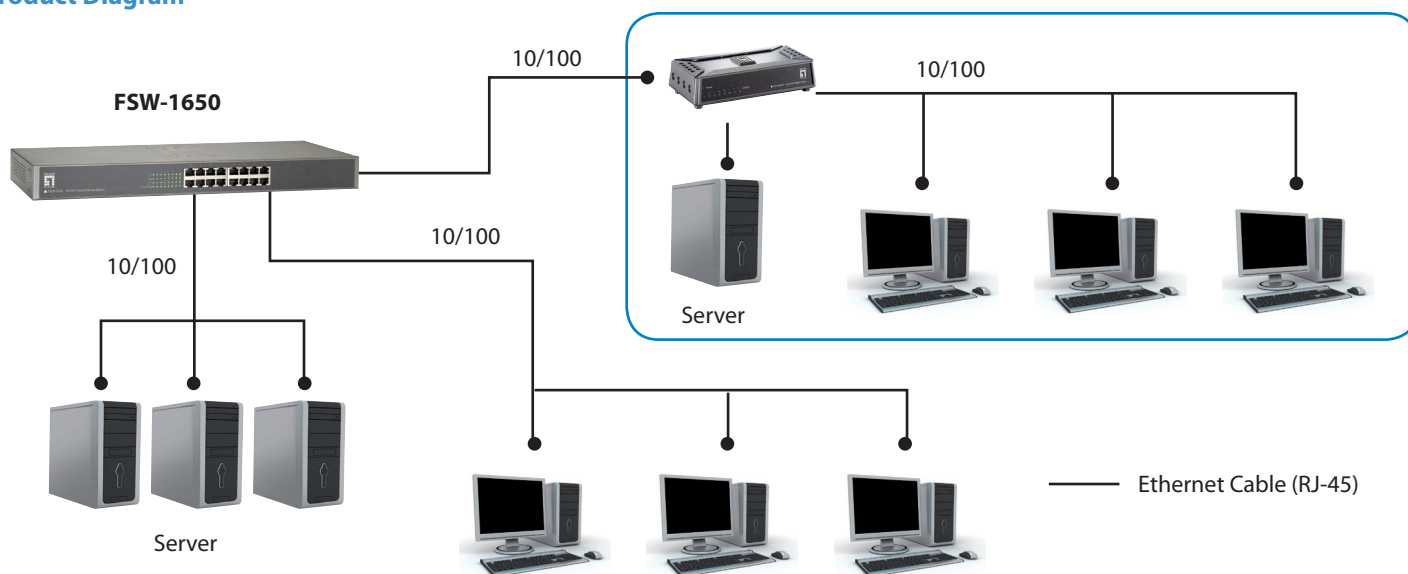
180mm (L) x 440mm (W) x 44mm (H)

2.05 kg

Certifications

CE
 RoHS

Product Diagram



Order Information

FSW-1650: 16-Port 10/100 Rackmount Switch

Package Contents

FSW-1650, Power Cord, Rack-mount Brackets, Quick Installation Guide