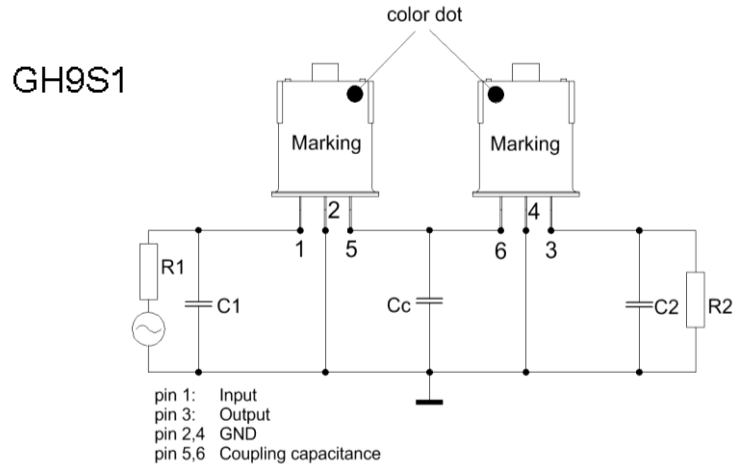
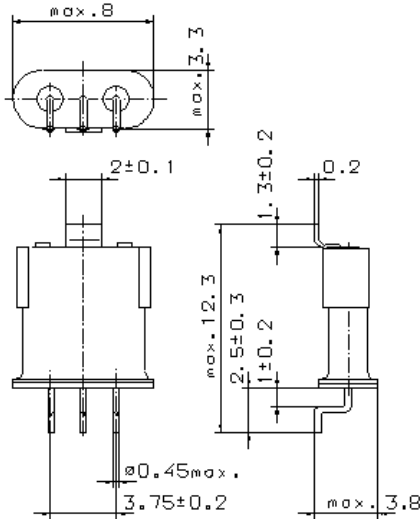


Specification for monolithic crystal filter:

**MQF 45.0 - 0750/20**

**1. General**

1.1. Package ( each filter consist of a matched pair of two packages GH9S1 ):



- |                                   |                  |
|-----------------------------------|------------------|
| 1.2. Type name:                   | MQF 45.0-0750/20 |
| 1.3. Number of poles:             | 4                |
| 1.4. Operable temperature range:  | -30°C to +80°C   |
| 1.5. Operating temperature range: | -25°C to +70°C   |
| 1.6. Storage temperature range:   | -55°C to +80°C   |

**2. Electric values**

- |   |                          |
|---|--------------------------|
| 2.1. Nominal centre frequency fo:   | 45.0 MHz                 |
| <b>2.2. Pass band</b>   |                          |
| 2.2.1. Bandwidth between 3 dB - frequencies:                                | ≥ fo ± 3.75 kHz          |
| 2.2.2. Ripple:  | ≤ 1.0 dB at fo ± 3.0 kHz |
| 2.2.3. Insertion loss:<br>( measured on smallest attenuation in pass band ) | ≤ 5.0 dB                 |
| <b>2.3. Stop band</b>   |                          |
| 2.3.1. fo ± 12.5 kHz  | ≥ 30 dB                  |
| 2.3.2. fo ± 910 kHz   | ≥ 90 dB                  |
| 2.4. Terminating impedance R//C ( input and output ):                       | 350 Ω // 6.5 pF          |
| 2.4.1. Coupling capacitance ( Cc ):   | 18 pF                    |

3. Marking: manufacturer, date code  
45.0-0750/20

4. Environment conditions: Corresponding to Vectron standard CF001

Edited by: \_\_\_\_\_ date: \_\_\_\_\_ name: \_\_\_\_\_