

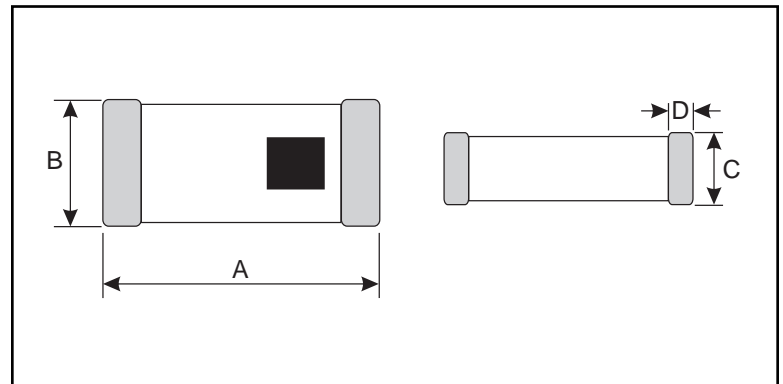
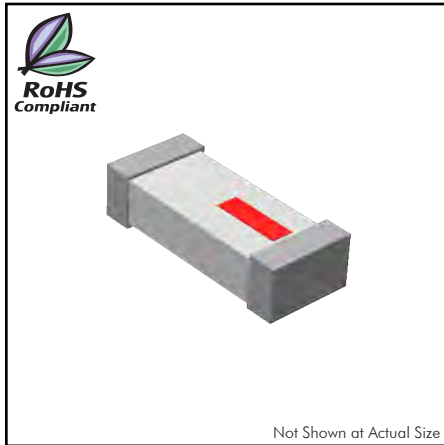
CTMCA5020F Series

SPECIFICATIONS

Part Number	Frequency Range (MHz)	Peak Gain (XZ-V) Typ.	Average Gain (XZ-V) Typ.	Return Loss Min.	Impedance (Ω)
CTMCA5020F-2R4	2400-2500	0 dBi	-1 dBi	9.5 dB	50

PHYSICAL DIMENSIONS

Size	A	B	C	D
mm	5.00±0.20	2.00±0.20	1.10±0.20	0.50±0.30
inches	0.197±0.008	0.079±0.008	0.043±0.008	0.020±0.012



CHARACTERISTICS

Description: Multi-layer Chip Antenna.

Features: Monolithic SMD type. Wide bandwidth.

Applications: WLAN, Home RF, Bluetooth Modules, etc.

Operating Temperature: -40°C to +85°C

Input Power: 3W Max.

Packaging: Tape & Reel.

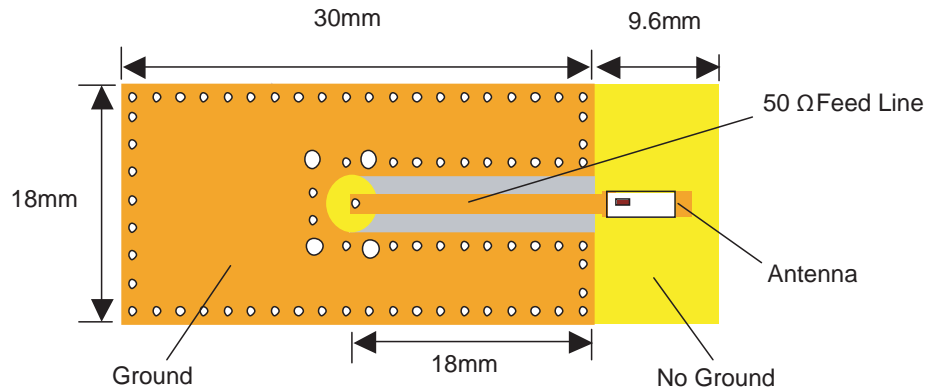
Miscellaneous: **RoHS Compliant.**

Additional Information: Additional electrical & physical information available upon request.

Samples available. See website for ordering information.

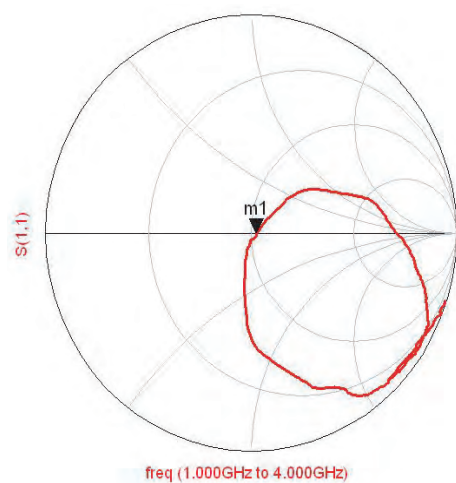
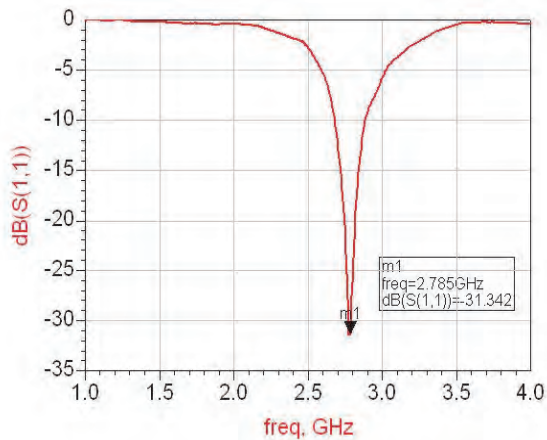
Typical Electrical Characteristics (T=25°C)

Test Board:

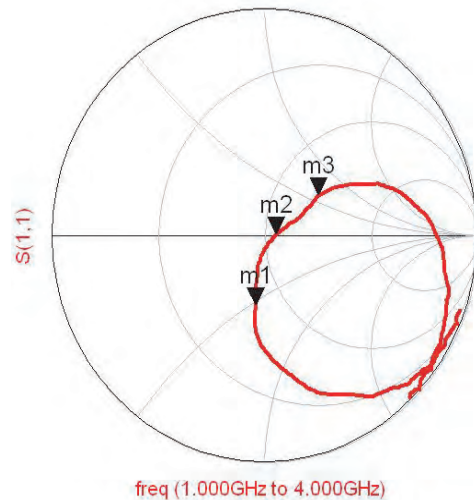
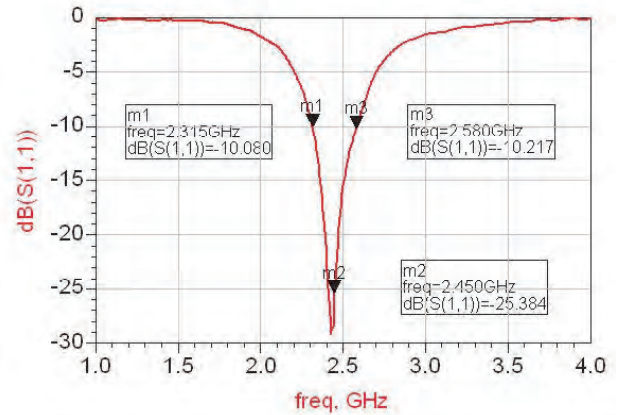


Return Loss:

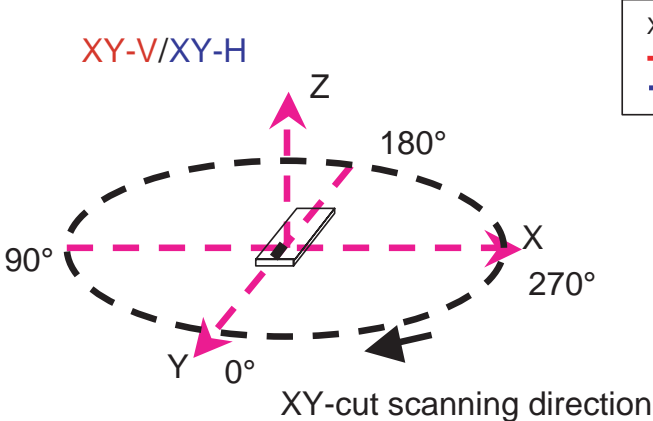
a) Without Matching Circuits



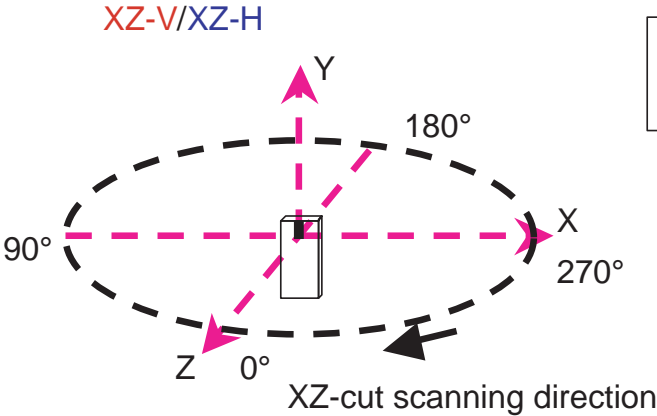
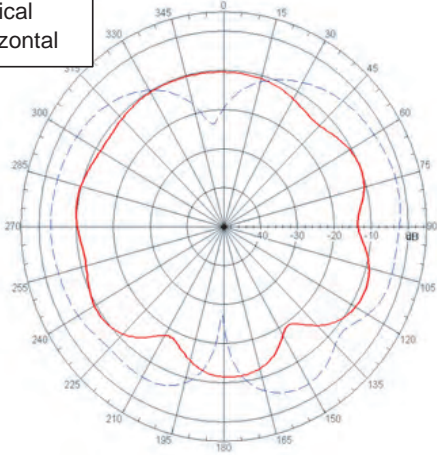
b) With Matching Circuits



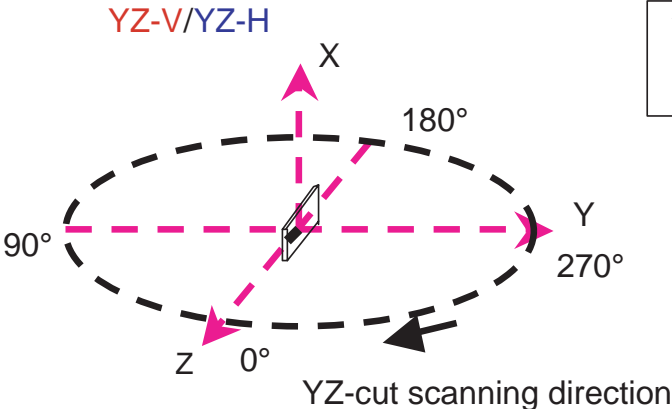
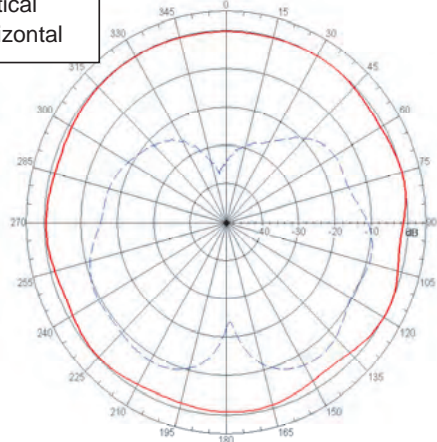
Typical Radiation Patterns



XY cut @2.45GHz
— Vertical
- - - Horizontal



XZ cut @2.45GHz
— Vertical
- - - Horizontal



YZ cut @2.45GHz
— Vertical
- - - Horizontal

