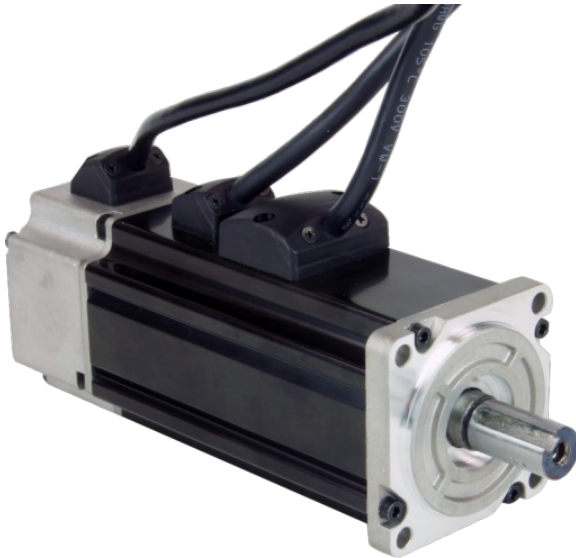


## J0400-355-4-000

60mm Servo Motor, 400W, with Brake

1pc. - 555.00  
50pc. - 416.25



### ***Product Features***

- *High torque density*
- *Low rotor inertia*
- *Compact size*
- *High-resolution, incremental encoders (2500 lines, 10000 counts)*
- *Brake*
- *IP65 rated for harsh environments*






### **Description**

High performance brushless AC servo motor with brake.  
Standard configuration includes high-resolution, incremental encoder feedback.  
This motor is UL Recognized in the US and Canada, file no. E472271.

## Specifications

<b>Part Number:</b>	J0400-355-4-000
<b>Frame Size:</b>	60 mm
<b>Continuous Torque:</b>	11.24 in-lb
<b>Peak Torque:</b>	30.97 in-lb
<b>Rated Power:</b>	400 watts
<b>Rated Voltage:</b>	60 DC volts
<b>Rated Speed:</b>	3000 rpm
<b>Peak Speed:</b>	6000 rpm
<b>Rated Current:</b>	6.6 A rms
<b>Peak Current:</b>	19.8 A rms
<b>Torque Constant:</b>	1.69 in-lb/A
<b>Voltage Constant:</b>	20.0 V/krpm
<b>Armature Resistance:</b>	0.57 Line-to-Line ohms
<b>Armature Inductance:</b>	2 Line-to-Line mH
<b>Motor Length:</b>	6.24 inch
<b>Rotor Inertia:</b>	0.00269 oz-in-sec <sup>2</sup>
<b>Weight:</b>	4.2 lbs
<b>Integral Holding Brake:</b>	Yes
<b>Storage Temperature:</b>	-20 to 80 °C
<b>Operating Temperature:</b>	0 to 40 °C
<b>Insulation Class:</b>	Class B (130 °C)
<b>Maximum Radial Load:</b>	54 lbs
<b>Maximum Thrust Load:</b>	15 lbs
<b>Perpendicularity:</b>	0.0015 inches
<b>Concentricity:</b>	0.0015 inches

## Downloads

<b>Datasheet:</b>	<a href="http://s3.amazonaws.com/applied-motion-pdf/J0400-355-4-000.pdf">http://s3.amazonaws.com/applied-motion-pdf/J0400-355-4-000.pdf</a>
<b>2D Drawing:</b>	 <a href="#">J0400-355-4-000_RevD.pdf</a>
<b>3D Drawing:</b>	 <a href="#">J0400-355-4-000A.igs</a>
<b>Speed-Torque Curves:</b>	 <a href="#">speed torque model J0400-305-4-000 sv7.pdf</a>

## Pricing

	<b>J0400-355-4-000</b> Part No. J0400-355-4-000
<b>1pc.</b>	\$555.00
<b>25pc.</b>	\$477.30
<b>50pc.</b>	\$416.25
<b>100pc.</b>	<a href="#">Request a Quote</a> for 100+ piece pricing.

## Products in the Series J Series Servo Motors

Number	Frame Size	Continuous Torque	Peak Torque	Motor Length	Rated Power	Rotor Inertia	1pc./50pc.
<a href="#">301-3-000</a>	40 mm	2.8	8.1	4.33	100	0.00059	\$296.00 / \$222.00
<a href="#">303-3-000</a>	40 mm	2.83	8.5	4.33	100	0.00059	\$338.00 / \$253.50
<a href="#">351-3-000</a>	40 mm	2.83	8.14	5.82	100	0.00073	\$464.00 / \$348.00
<a href="#">353-3-000</a>	40 mm	2.83	8.5	5.82	100	0.00066	\$464.00 / \$348.00
<a href="#">301-4-000</a>	60 mm	5.66	15	4.17	200	0.00133	\$354.00 / \$265.50
<a href="#">302-4-000</a>	60 mm	5.66	15.04	4.17	200	0.00133	\$354.00 / \$265.50
<a href="#">304-4-000</a>	60 mm	5.66	15	4.17	200	0.00133	\$354.00 / \$265.50
<a href="#">351-4-000</a>	60 mm	5.66	15	5.45	200	0.00133	\$505.00 / \$378.75
<a href="#">352-4-000</a>	60 mm	5.66	15.04	5.45	200	0.00133	\$505.00 / \$378.75
<a href="#">354-4-000</a>	60 mm	5.66	15	5.45	200	0.00134	\$505.00 / \$378.75
<a href="#">301-4-000</a>	60 mm	11.23	30.95	4.68	400	0.00269	\$411.00 / \$308.25
<a href="#">302-4-000</a>	60 mm	11.24	30.97	4.68	400	0.00269	\$411.00 / \$308.25
<a href="#">305-4-000</a>	60 mm	11.24	30.97	4.68	400	0.00269	\$411.00 / \$308.25
<a href="#">351-4-000</a>	60 mm	11.24	30.95	6.24	400	0.00211	\$555.00 / \$416.25
<a href="#">352-4-000</a>	60 mm	11.24	30.97	6.24	400	.00211	\$555.00 / \$416.25
<a href="#">355-4-000</a>	60 mm	11.24	30.97	6.24	400	0.00269	\$555.00 / \$416.25
<a href="#">302-5-000</a>	80 mm	21.24	61.95	5.19	750	0.01316	\$495.00 / \$371.25
<a href="#">352-5-000</a>	80 mm	21.24	61.95	7.04	750	0.01373	\$710.00 / \$532.50