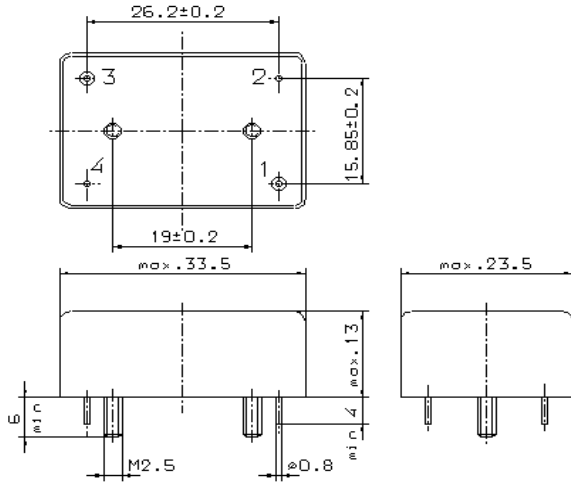


Specification for monolithic crystal filter series

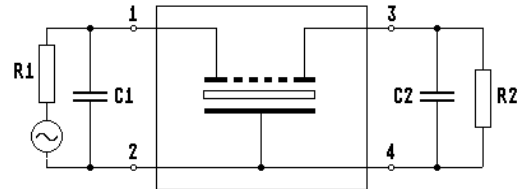
MQF 60.0.....130.0-1500/C

1. General

1.1. Package:



GM 33



- | | |
|-----------------------------------|-----------------------|
| 1.2. Type name: | MQF 60.....130-1500/C |
| 1.3. Number of poles: | 4 |
| 1.4. Operating temperature range: | -20°C to +70°C |
| 1.5. Storage temperature range: | -35°C to +80°C |

2. Electric values

- | | |
|-----------------------------------|-----------------------------------|
| 2.1. Nominal center frequency fo: | 60.....130 MHz |
| | T.B.D. by customer for each order |

2.2. Pass band

- | | |
|---|--------------------------|
| 2.2.1. Bandwidth between 3 dB - frequencies: | ≥ fo ± 7.5 kHz |
| 2.2.2. Ripple: | ≤ 1.0 dB at fo ± 5.0 kHz |
| 2.2.3. Insertion loss: (measured on smallest attenuation in pass band) | ≤ 4.0 dB |

2.3. Stop band

- | | |
|---------------------|-----------------------------|
| 2.3.1. fo ± 30 kHz | ≥ 20 dB |
| 2.3.2. fo ± 60 kHz | ≥ 60 dB (except spurious) |
| 2.3.3. fo ± 910 kHz | ≥ 80 dB (except spurious) |

- | | |
|--|---|
| 2.4. Terminating impedance (input and output): | 50 Ω // 0 pF |
| 2.5. Maximum input power level: | 0 dBm / +10 dBm (working / non-damaged) |

- | | |
|-------------|--|
| 3. Marking: | manufacturer, date code MQF xx.xxx-1500/C |
|-------------|--|

e. g. for center frequency 69.325 MHz filter part description is: MQF 69.325-1500/C

- | | |
|----------------------------|---|
| 4. Environment conditions: | Corresponding to Vectron standard CF001 |
|----------------------------|---|

Edited by: _____ date: _____ name: _____