

# VOLTAGE CONTROLLED OSCILLATOR

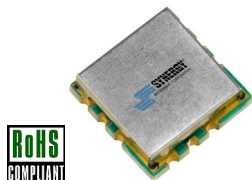
## SURFACE MOUNT MODEL: DCO143151-8

OPTIMIZED BANDWIDTH

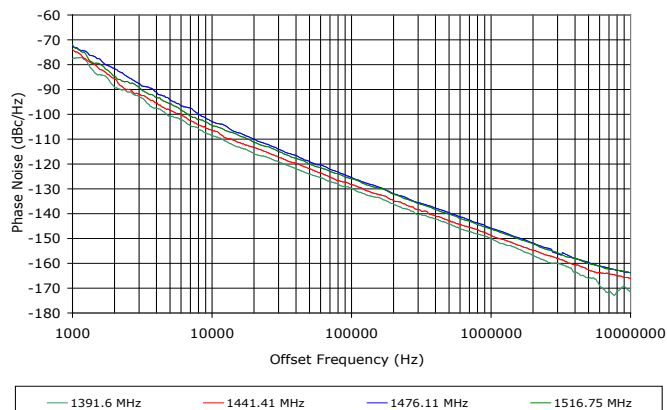
1430 - 1515 MHz

### FEATURES:

- ▶ Miniature Size, Surface Mount (0.3" x 0.3")
- ▶ Exceptional Phase Noise Performance
- ▶ Fast Tuning
- ▶ Planar Resonator Construction



### Phase Noise



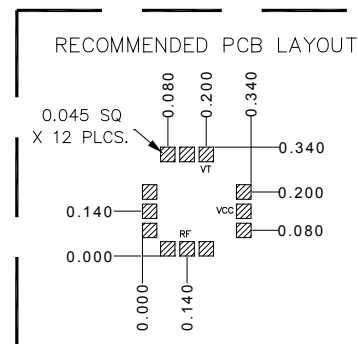
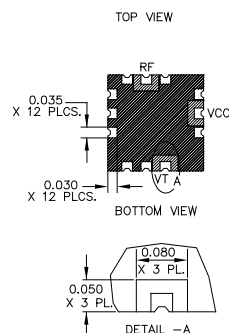
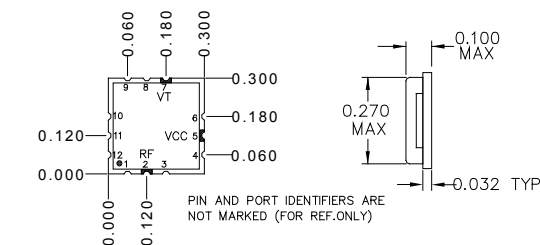
### SPECIFICATIONS (Rev. B 04/18/14)

Frequency	1430 - 1515 MHz	
Tuning Voltage	0.3 - 3V	
Bias Voltage	+8 VDC @ 20 mA (Max.)	
Output Power	0 dBm (Min.)	
Tuning Sensitivity	45 - 90 MHz/V (Typ.)	
Output Impedance	50 Ohms (Nom.)	
Harmonic Suppression	18 dB (Typ.)	
Frequency Pulling	2 MHz (Typ. @ 1.75:1 VSWR)	
Frequency Pushing	1 MHz/V (Typ.)	
Tuning Port Capacitance	49 pF (Typ.)	
Typical Phase Noise	Offset	dBc/Hz
	10 kHz	-105
	100 kHz	-127
Operating Temperature Range	-40 to +85 °C	

### Absolute Maximum Ratings

Storage Temp. Range	-55 to +125 °C
Bias Voltage	+8.5 V
Tuning Voltage	+10 V
DC Voltage Applied to RF Out	±25 V

Package # 343



PACKAGE MOUNTING: SEE APPLICATION NOTE AN7300 & AN7302

TOLERANCES ON THREE  
DECIMAL PLACES = ± 0.015

DIMENSIONS ARE IN INCHES.  
ALL UNLABELED PINS  
TO BE GROUNDING.

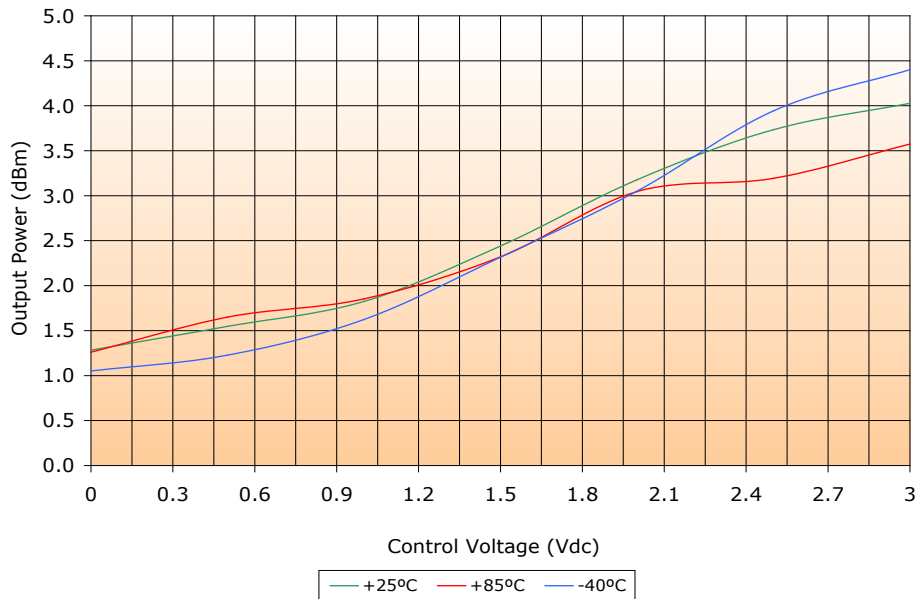
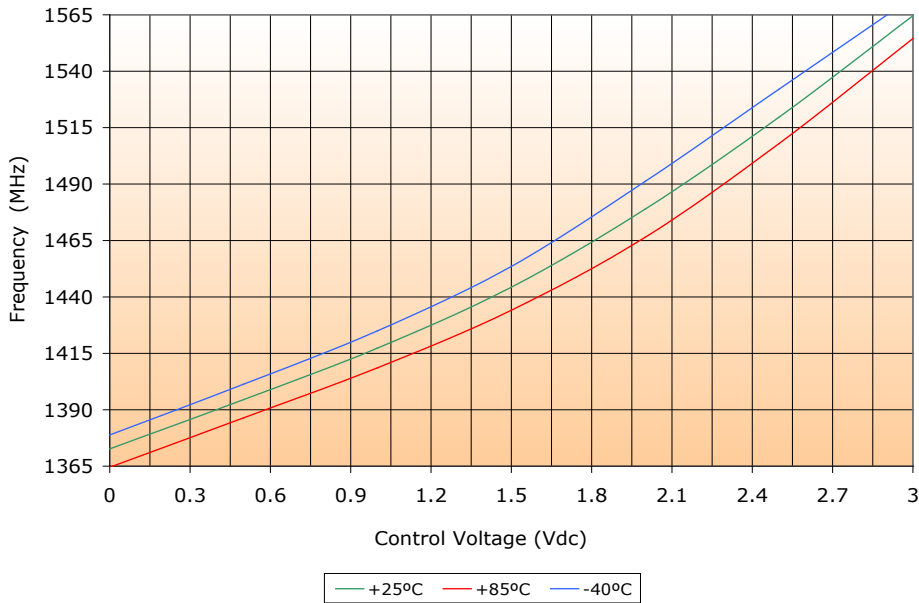
# VOLTAGE CONTROLLED OSCILLATOR

## SURFACE MOUNT MODEL: DCO143151-8

OPTIMIZED BANDWIDTH

1430 - 1515 MHz

PERFORMANCE PLOTS



# VOLTAGE CONTROLLED OSCILLATOR

## SURFACE MOUNT MODEL: DCO143151-8

OPTIMIZED BANDWIDTH

1430 - 1515 MHz

PERFORMANCE PLOTS

