

New Jersey Semi-Conductor Products, Inc.

20 STERN AVE.
 SPRINGFIELD, NEW JERSEY 07081
 U.S.A.

TELEPHONE: (973) 376-2922
 (212) 227-6005
 FAX: (973) 376-8960

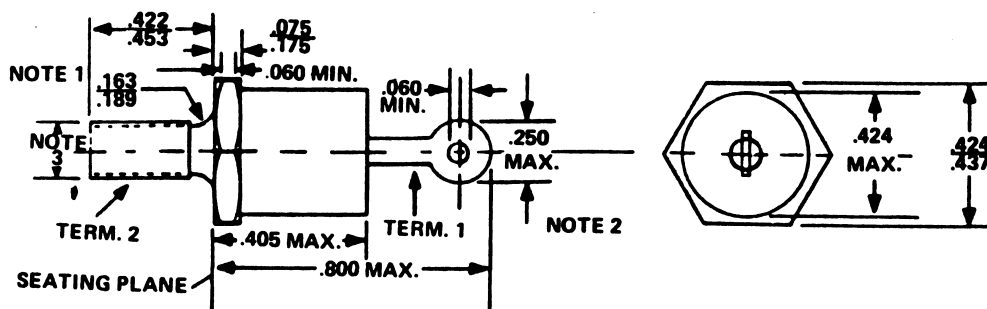
PARAMETERS

1N3890R
 FAST RECTIFIER, 10A $\langle I(O)/I(F) \leq 20A$

Description: Fast Rectifier, 10A $\langle I(O)/I(F) \leq 20A$

Manufacturer.....	many
Mil/High-Rel? (Y/N).....	
I(out) (If AVG) Max.....	12
VRRM.....	100
t(rr) (S).....	200n
@If (test).....	1.0
@Ir (A).....	
Vf Max.....	1.4
@If (test).....	12
Ir @25xC.....	25u
@Volts (test) (V).....	100
Ir @ Diff. Temp (A).....	3.0m
@Temp (test) (xC).....	100#
Mat.....	Silicon
Oper. Temp (xC) Max.....	150u
Pkg Style.....	D0-203AA
Surface Mounted (Y/N).....	N

u Junction Temperature # Case Temperature 2 It(rms)



NOTES:

1. COMPLETE THREADS TO EXTEND TO WITHIN 2-1/2 THREADS OF SEATING PLANE.
2. ANGULAR ORIENTATION OF THIS TERMINAL IS UNDEFINED.
3. 10-32 UNF-2A MAXIMUM PITCH DIAMETER OF PLATED THREADS SHALL BE BASIC PITCH DIAMETER (.1697", 4.29 MM) REF. (SCREW THREAD STANDARDS FOR FEDERAL SERVICES 1957) HANDBOOK H28 P1.

