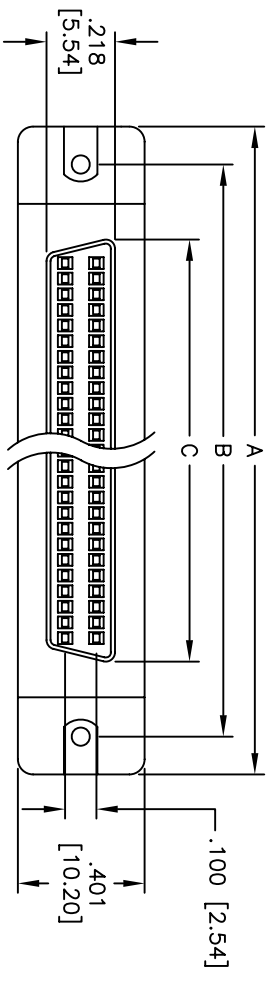
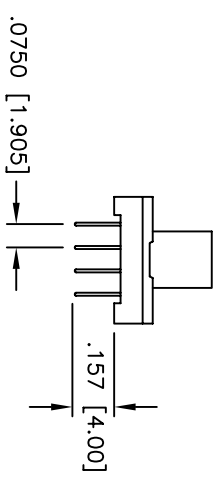
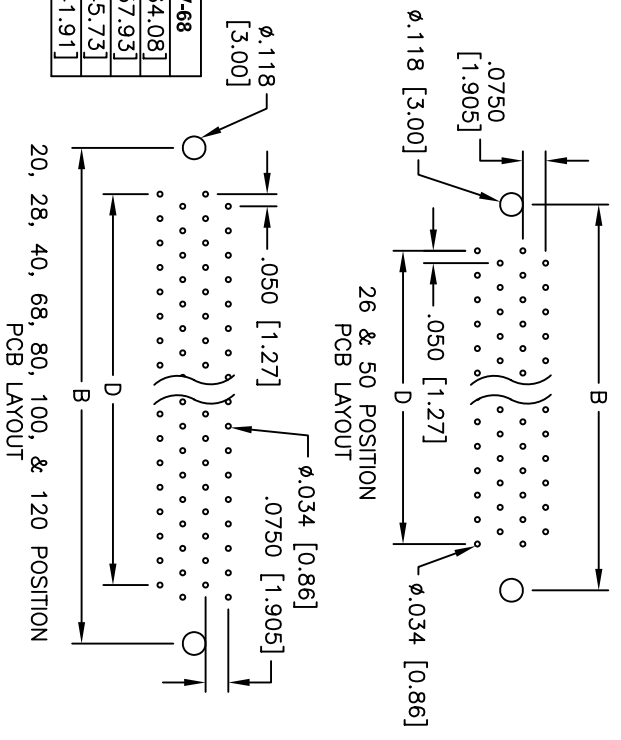
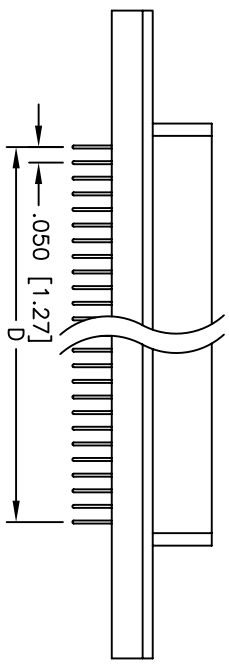


Rev	AWO #	Description	Date	Appr
-		RELEASED	5/13/05	

APPROVED: _____
 DATE: _____ TITLE: _____



	S2A-SV-20	S2A-SV-26	S2A-SV-28	S2A-SV-40	S2A-SV-50	S2A-SV-68
A	1.323 [33.60]	1.469 [37.30]	1.523 [38.68]	1.823 [46.30]	2.073 [52.65]	2.523 [64.08]
B	1.081 [27.45]	1.228 [31.20]	1.281 [32.53]	1.581 [40.15]	1.831 [46.50]	2.281 [57.93]
C	0.600 [15.25]	0.750 [19.05]	0.800 [20.33]	1.100 [27.95]	1.350 [34.30]	1.800 [45.73]
D	0.450 [11.43]	0.600 [15.24]	0.650 [16.51]	0.950 [24.13]	1.200 [30.48]	1.650 [41.91]



	S2A-SV-80	S2A-SV-100	S2A-SV-120
A	2.823 [71.70]	3.323 [84.40]	3.823 [97.10]
B	2.581 [65.55]	3.081 [78.25]	3.581 [90.95]
C	2.100 [53.35]	2.600 [66.05]	3.100 [78.75]
D	1.950 [49.53]	2.450 [62.23]	2.950 [74.93]

SPECIFICATIONS:

Material:
 Insulator: PBT, glass reinforced, rated UL 94V-0
 Insulator color: Black
 Contacts: Phosphor Bronze
 Metal Backshell: Zinc, Nickel plated
 Plating:
 Gold flush over Nickel underplate on mating area,
 Tin over Copper underplate on tails

Electrical:
 Operating voltage: 250 VAC max
 Current rating: 1 Amp max
 Contact resistance: 35 mohms max
 Insulation resistance: 500 Mohms min
 Dielectric withstanding voltage: 500 VAC for 1 minute

Temperature Rating:
 Operating temperature: -55°C to +105°C

Environmental:
 Lead free, RoHS compliant
 Recommended soldering temp: 235°C for 5 seconds



ADAM TECH

909 Rahway Avenue, Union, NJ 07083
 Phone: 908-687-5000 Fax: 908-687-5710

TITLE: SCS1 IIII SOCKET, W/O LATCH BLOCKS
 VERTICAL, #4-40 MOUNTING HOLES

UNLESS OTHERWISE SPECIFIED ALL DIMENSIONS ARE INCHES [MM]		TOLERANCES: EXCEPT AS NOTED	
.X	± .10	ØXX	± .10
.XX	± .020	ØXXX	± .015
.XXX	± .015	ØXXXX	± .010
APPROVALS		DATE	
DRAWN	SS	5/13/05	
CHECKED			
APPROVED			
SIZE	PART NO.	SCALE	REV.
X	S2A-SV-XXX-2-TFA-1	NTS	
REF:		SHEET	1 OF 1