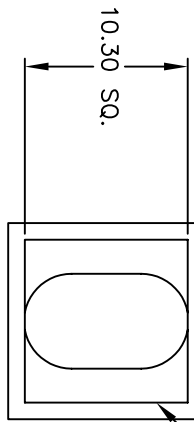
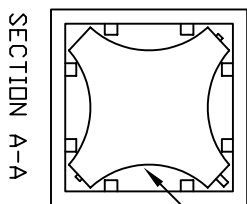


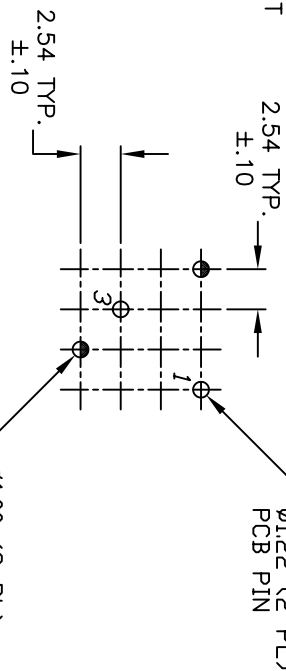
12.40 SQ.
8J DVAL BUTTON BLK-UL94HB
(P080000)



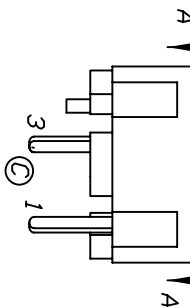
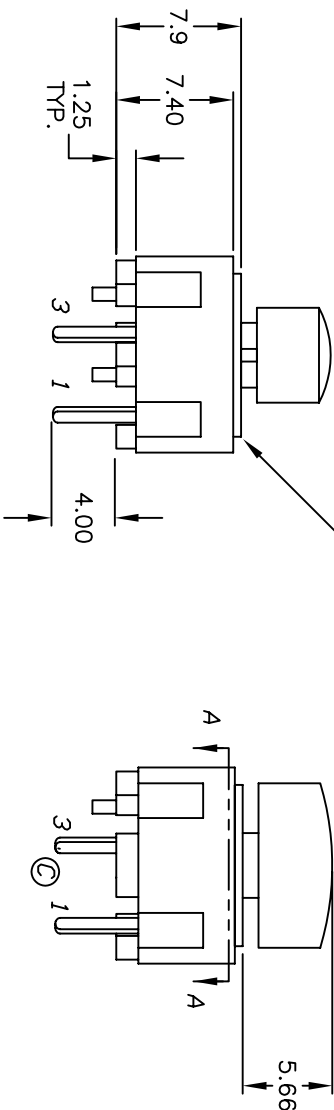
TOP VIEW - SHOW ORIENTATION OF LEGENDS
IN RESPECT TO THE PCB PIN TERMINALS.



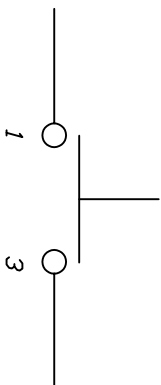
320 E1-1 CONTACT
(B050001)



320.02 CAP BLK UL94VD
(B040205)



CIRCUIT: SPST
CONTACT CONFIGURATION



NOTES:

1. ALL DIMENSIONS IN MM
2. GENERAL TOLERANCE: X.X=±0.4
X.XX=±0.25
3. TERMINAL NO.'S FOR REFERENCE ONLY.
4. RATING: 25mA, @50VDC
5. OPERATING FORCE: 120gf
6. TRAVEL TO MAKE: 0.7mm
7. PARTS TO BE 2002/95/EC (ROHS) COMPLIANT
*MANUFACTURED AFTER 4/1/2006

E-SWITCH®

D	15874	ROHS NOTE	3/17/06	PH
C	15562	SWITCHED TERMINAL NUMBERS	11/23/05	PH
B	12122	PART NO. WAS A300014	5/7/02	
A	12033	RELEASED FOR PRODUCTION	4/4/02	CB
REV.	ECN NO.	DESCRIPTION	DATE	CHKD

SCALE	DATE	DR	DWG	REV
2:1	12/11/01	CJB	XA1979A	D
TITLE: 320.02 E1-1 (W/8J DVAL - VERTICAL) VD				

THE INFORMATION CONTAINED IN THIS DOCUMENT
IS PROPRIETARY TO E-SWITCH AND IS
NOT TO BE COPIED OR TRANSFERRED