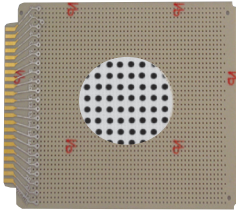
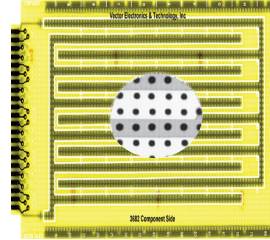


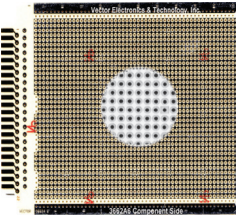
44 CONTACTS



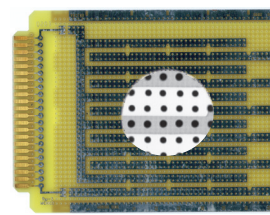
3662 4.50"H X 6.50"Lx.062" TH
3662-2 4.5"H X 9.6"L X .062" TH
3662-5 4.5"H X 4.5"L X .062" TH
 0.100" grid Gold-plated edge contacts only. 22 numbered edge contacts on front side; 22 including grounding contact on reverse side. Bare prototype area board.
 .042" diameter holes. 44 gold-plated contacts (22 each side) on .156" centers.
 16-Pin DIP= 50
 Material: CEM-1
 WW Terminals: T44, T46, T49, T68
 Solder Connector: R644
 WW Connector: R644-3C or R644-3F
 WW Socket Pin: R32
 Extender: 3690
 Rec. Card Cage: CCK13



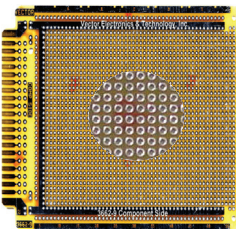
3682-2 4.50"H X 6.5"L X .062"TH
3682 4.5" X 9.6"L X 0.062"TH
 0.100" grid. Gold-plated edge contacts with Interleaved bus pattern on wiring side only. Bus outline is traced on component side to facilitate device placement. Unclad test point area at top of board.
 .042" diameter holes. 44 gold-plated contacts (22each side) on .156" centers.
 16-pin DIP Capacity: 3682-2= 24 3682=48
 WW Terminals: T44, T46, T49, T68
 Socket pin: R32 Solder Connector: R644
 WW Connector: R644-3C or R644-3F
 Extender: 3690
 Card Cage: CCK 13; CCK14
 Material: FR-4



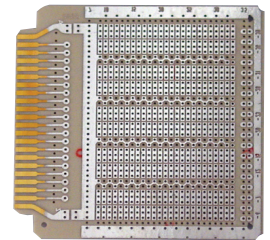
3662A6 4.50"H X 6.5"L X .062"TH
 0.100" grid. Gold-plated edge contacts with overall ground plane on one side with 0.085" diameter clearance around holes, no pads or ground plane on component side. Row and column legends on both sides. Bare prototype area board.
 .042" diameter holes. 44 gold-plated contacts (22each side) on .156" centers.
 16-pin DIP Capacity = 90
 WW Terminals: T44, T46, T49, T68.
 Socket pin: R32 Solder Connector: R644
 WW Connector: R644-3C or R644-3F
 Extender: 3690
 Card Cage: CCK 13
 Material: CEM-1



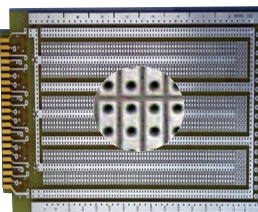
3682-4 4.50"H X 6.5"L X .062"TH
 0.100" grid. Gold-plated edge contacts with Interleaved bus pattern on wiring side and overall ground plane on component side. Unclad test point area at top of board.
 .042" diameter holes. 44 gold-plated contacts (22each side) on .156" centers.
 16-pin DIP Capacity: = 24
 WW Terminals: T44, T46, T49, T68
 Socket pin: R32 Solder Connector: R644
 WW Connector: R644-3C or R644-3F
 Extender: 3690
 Card Cage: CCK 13; CCK14
 Material: FR-4



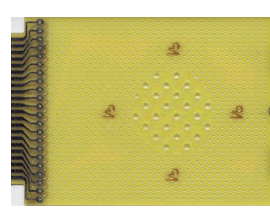
3662-9 4.50"H X 6.5"L X .062"TH
 0.100" grid. Gold-plated edge contacts with Pad-Per-Hole pattern; 0.085" diameter pads both sides.
 Voltage plane, ground plane, row and column legends on both sides.
 .042" diameter holes. 44 gold-plated contacts (22each side) on .156" centers.
 16-pin DIP Capacity = 48
 WW Terminals: T44, T46, T49, T68
 Socket pin: R32
 Solder Connector: R644
 WW Connector: R644-3C or R644-3F
 Extender: 3690
 Card Cage: CCK 13
 Material: FR-4



4112-5 4.50"Hx4.50"Lx.062" TH
4112-4 4.50"Hx6.50"Lx.062" TH
4112 4.50"Hx9.60"Lx.062" TH
 0.100" grid Zig-Zag Buses with 3-hole solder pad pattern on wiring side, overall Ground Plane pattern on component side (0.085" dia. clearance around holes) 3-hole pads are 0.280" x 0.080".
 Row and column legends.
 .042" holes not plated thru. 44 gold-plated contacts (22 each side) on .156" centers.
 16-pin DIP Capacity: 4112-5 = 8 4112-4 = 25 4112 = 40
 WW Terminals: T44, T46, T49, T68
 Socket pin: R32
 Solder Connector: R644
 Extender: 3690
 Card Cage: CCK12, CCK 13, CCK 14
 Material: FR-4



3677 4.50"H x 9.60"L x .062" TH
3677-2 4.50"H x 6.50"L x .062"TH
 0.100" grid 3-Hole Solder Pad (0.28" x 0.080") one side only. Voltage plane, ground plane, row and column legends on both sides.
 .042" holes not plated thru
 22/44 contacts gold plated @.156" centers
 16-Pin DIP: 3677 = 21 3677-2 = 12
 Material: FR-4
 WW Terminals: T44, T46, T49, T68
 Solder Connector: R644
 WW Socket Pin: R32
 Extender: 3690
 Rec. Card Cage: CCK14
 WW Connector: R644-3



838WE 4.50"H x 6.50"Lx.062" TH
 Alternating intersections of 0.100" designed for mounting transistors. Solder plated edge contacts only, 22 numbered edge contacts on front side; 22 including grounding contact on reverse side. Bare prototype area for unrestricted component placement.
 .062" diameter holes, 44 solder plated edge card connector contacts on .156" centers
 Material: FR-4 Epoxy Glass
 Push-In Terminal: T28
 Solder Connector: R644
 Extender: 3690, 3690-6
 WW Connector: R644-3C

Plugbord