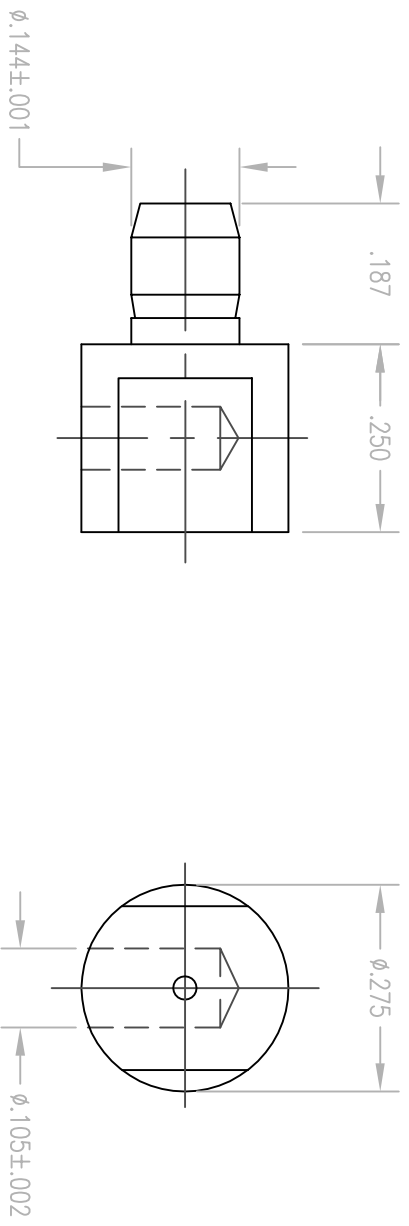


DWG. NO.

01312

REV.	DESCRIPTION	DATE	BY	APPD
1	NPR 2301	2/29/01	MJF	



- NOTES:
1. MATERIAL:
BODY: BRASS PER ASTM B16
 2. FINISH:
BODY: .000030 MIN GOLD PER MIL-G-45204 OVER
.000050 MIN NICKEL PER QQ-N-290
 3. FOR USE WITH 14 AWG WIRE.

<p>PER ASME Y14.5M-1994 UNLESS OTHERWISE SPECIFIED: TOLERANCES ARE IN INCHES (M)</p> <p>DECIMALS .XX ± .01/0.254 FRACTIONS .XXX ± .005/0.127 ANGLES ± Z'</p> <p>SCALE: 4:1</p>		<p>Litton Winchester/Reticon 400 Park Road Waterford, Connecticut 06795</p>	
<p>CUSTOMER DRAWING</p>		<p>TITLE TERMINATION 10/20 AMP</p>	
<p>DRAWN MJF</p>	<p>DATE 2/29/01</p>	<p>CHECKED</p>	<p>DATE</p>
<p>APPROVED</p>	<p>DATE</p>	<p>APPROVED</p>	<p>DATE</p>
A	01312	SHT. 1	OF 1
		REV. 1	