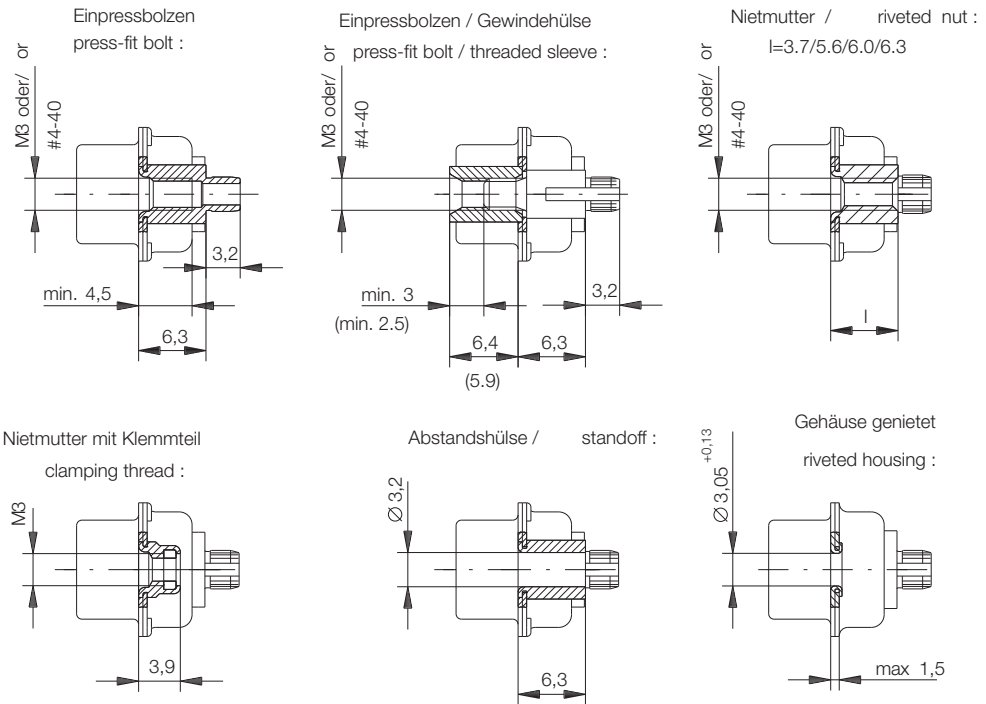


Schnitt A-A / cross section A-A



Ident-Nr. / Part No. : Refer to table on page 2

Polzahl / No. of contacts : Refer to table on page 2

Anschlußart / Terminal Type : Pressfit

Anschlußlänge / Terminal Length : -

Bauart / Type : 3WK3

Anforderungsstufe / Class : 201=0.8µm (30 µin) Au CONTACT, GOLD/LEAD TERMINAL

Aufdruck / Logo : ERNI

Zubehör / Accessory : Refer to table on page 2

Sonderausführung / Special : Refer to table on page 2

Leiterplattenbohrbild 144058 / Board hole pattern 144058  
 Schichtaufbau im metallisierten Loch / metal plating of plated-through hole  
 für Einpresskontakt Zeichnung 114110 / for press-fit contact drawing 114110  
 für Einpressbolzen Zeichnung 114109 / for press-fit bolt drawing 114109

Information:	Tolerances	 All Dimensions in mm	Scale	2:1
	All rights reserved. Only for information. To insure that this is the latest version of this drawing, please contact one of the ERNI companies before using.		Designation <b>TMC-P 3WK3-EP36-6,3-3</b> <b>TMC-P 3WK3-EP36-6,3-3</b>	
Subject to modification without prior notice. Drawing will not be updated.		 www.ERNI.com	<b>054992</b>	
Index	Date		M:00022981.SZN	TMCP

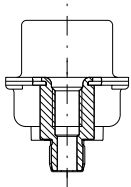
Consider protection memo from DIN 54

## Ordering Information

### D-Sub Connector High Power Pressfit Vertical Male Assembly Height 6.3mm

Number of Pins

3WK3

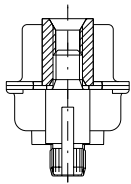


Accessory Termination Side: Pressfit bolt M3

134438

Accessory Termination Side: Pressfit bolt #4-40

134439



Accessory Mating Side: Threaded sleeve M3    Accessory Termination Side: Pressfit bolt

134500

Accessory Mating Side: Threaded sleeve #4-40    Accessory Termination Side: Pressfit bolt

134501

## Ordering Information press-in tools

Number of Pins

Upper Tool with Quick  
Change Device

Lower Tool

3WK3

220504

220147