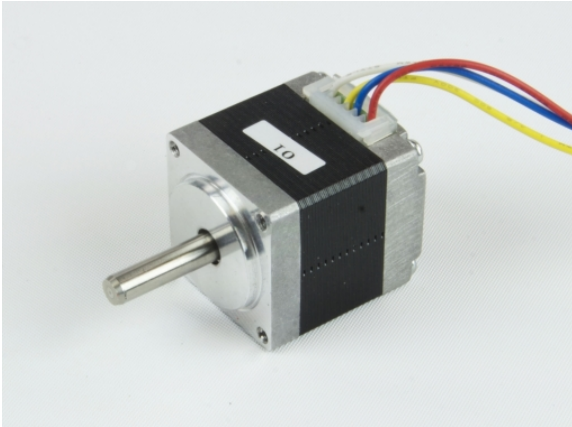


## HT11-020

NEMA 11 High Torque Step Motor

1pc. - 41.00  
50pc. - 30.75



### **Product Features**

- *2-phase hybrid step motor*
- *High torque design*
- *Standard NEMA 11 dimensions*



## Description

### **Product Description:**

The HT11-020 two-phase stepper motor is suitable for a wide range of motion control applications.

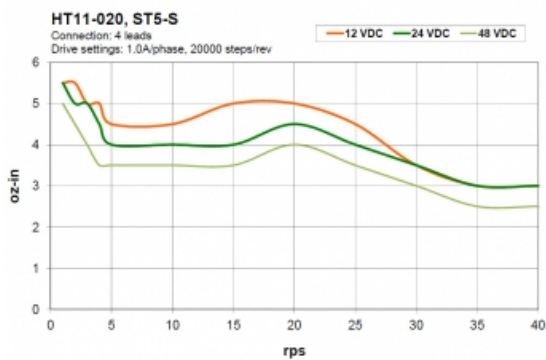
## Specifications

<b>Part Number:</b>	HT11-020
<b>Frame Size:</b>	NEMA 11
<b>Motor Type:</b>	High torque
<b>Part Number w/Double Shaft:</b>	HT11-020D
<b>Motor Length:</b>	1.22 inches
<b>Number of Lead Wires:</b>	4
<b>Lead Wire Configuration:</b>	flying leads, no connector
<b>Lead Wire/Cable Length:</b>	8 inches inches
<b>Lead Wire Gauge:</b>	26 AWG
<b>Bipolar Holding Torque:</b>	7.08 oz-in
<b>Step Angle:</b>	1.8 deg
<b>Bipolar Parallel Current:</b>	1.0 A/phase
<b>Bipolar Parallel Resistance:</b>	1.4 Ohms/phase
<b>Bipolar Parallel Inductance:</b>	1.3 mH/phase
<b>Rotor Inertia:</b>	1.27E-04 oz-in-sec <sup>2</sup>
<b>Integral Gearhead:</b>	No
<b>Weight:</b>	0.22 lbs
<b>Storage Temperature:</b>	-30 to 70 °C
<b>Operating Temperature:</b>	-20 to 50 °C
<b>Insulation Class:</b>	Class B (130 °C)
<b>Maximum Radial Load:</b>	3.37 lbs
<b>Maximum Thrust Load:</b>	1.80 lbs
<b>Shaft Run Out:</b>	0.001 inch T.I.R. max
<b>Radial Play:</b>	0.001 inch max w/ 1.1 lb load
<b>End Play:</b>	0.003 inch max w/ 1.1 lb load
<b>Perpendicularity:</b>	0.004 inches
<b>Concentricity:</b>	0.003 inches

## Downloads

<b>Family Datasheet:</b>	 <a href="#">StepMotorWiring-4-lead.pdf</a>
<b>Datasheet:</b>	<a href="http://s3.amazonaws.com/applied-motion-pdf/HT11-020.pdf">http://s3.amazonaws.com/applied-motion-pdf/HT11-020.pdf</a>
<b>2D Drawing:</b>	 <a href="#">HT11-020_RevA.pdf</a>
<b>3D Drawing:</b>	 <a href="#">HT11-020.igs</a>  <a href="#">HT11-020D.igs</a>
<b>Speed-Torque Curves:</b>	 <a href="#">HT11-020_TorqueCurves.pdf</a>

## Torque Curves



## Pricing

	<b>HT11-020</b> Part No. w/ Single Shaft	<b>HT11-020D</b> Part No. w/ Double Shaft
<b>1pc.</b>	\$41.00	\$41.00
<b>25pc.</b>	\$35.26	\$35.26
<b>50pc.</b>	\$30.75	\$30.75
<b>100pc.</b>	<a href="#">Request a Quote</a> for 100+ piece pricing.	