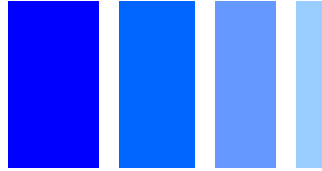


# LF Receiver Antenna CAS11D23



## Description

- LF receiver antenna for X/Y axis.
- Covered by over-molding.
- Low profile.
- L × W × H : 11.6 × 3.5 × 2.4 mm Max.
- RoHS compliance.

## Environmental Data

- Operating temperature range: -40°C~+125°C
- Storage temperature range: -40°C~+125°C

## Packaging

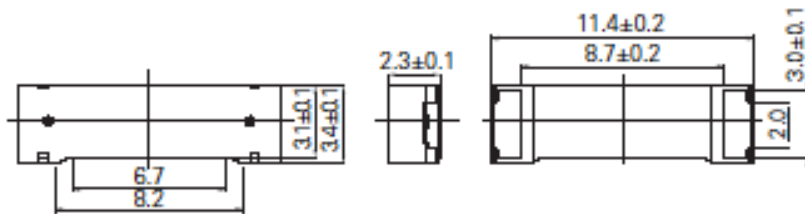
- Carrier tape and reel.
- 2,500pcs/ reel

## Applications

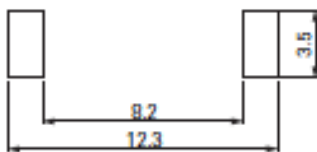
- PEPS, Smart key system.
- Security system
- TPMS



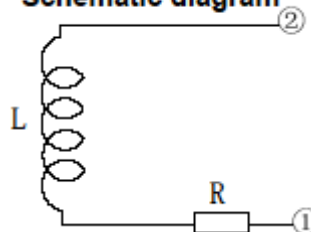
## Dimension - [mm]



## Suggest PCB layout - [mm]

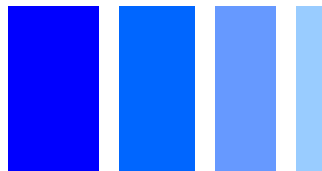


## Schematic diagram



L: Ferrite core coil inductance.  
R: Copper resistance.

# LF Receiver Antenna CAS11D23



## Electrical Characteristics

No.	Part No.	Stamp	Inductance(1-2)		Unloaded Q (Min.)	SRF Min. (kHz)	D.C.R Ref. ( $\Omega$ )
			mH	Within			
01	CAS11D23-722	722	7.20	$\pm 3\%$	40	700	50
02	CAS11D23-472	472	4.70	$\pm 3\%$	40	1,000	32
03	CAS11D23-342	342	3.40	$\pm 3\%$	35	1,200	27
04	CAS11D23-232	232	2.36	$\pm 3\%$	40	1,500	16

\* Measuring condition : L, Q at 125kHz, SER 1V

Please refer to the sales offices on our website - <http://www.sumida.com>

### Hong Kong

Tel.+852-2880-6781  
FAX.+852-2565-9600  
[sales@hk.sumida.com](mailto:sales@hk.sumida.com)

### Kanagawa (Japan)

Tel.+81-44-578-2102  
FAX.+81-44-578-2105  
[sales@jp.sumida.com](mailto:sales@jp.sumida.com)

### Chicago

Tel.+1-847-545-6700  
FAX. +1-847-545-6720  
[sales@us.sumida.com](mailto:sales@us.sumida.com)

### Shanghai

Tel.+86-021-5836-3299  
FAX.+86-021-5836-3266  
[shanghai.sales@cn.sumida.com](mailto:shanghai.sales@cn.sumida.com)

### Seoul

Tel.+82-2-6237-0777  
FAX.+82-2-6237-0778  
[sales@kr.sumida.com](mailto:sales@kr.sumida.com)

### Oberzell

Tel.+49-8591-937-0  
FAX. +49-8591-937-103  
[contact@sumida-eu.com](mailto:contact@sumida-eu.com)

### Shenzhen

Tel.+86-755-8291-0228  
FAX.+86-755-8291-0338  
[shenzhen.sales@cn.sumida.com](mailto:shenzhen.sales@cn.sumida.com)

### Singapore

Tel.+65-6296-3388  
FAX.+65-6296-3390  
[sales@sg.sumida.com](mailto:sales@sg.sumida.com)

### Neumarkt

Tel.+49-9181-4509-110  
FAX. +49-9181-4509-310  
[infocomp@eu.sumida.com](mailto:infocomp@eu.sumida.com)

### Taipei

Tel.+886-2-8751-2737  
FAX.+886-2-8751-2738  
[sales@tw.sumida.com](mailto:sales@tw.sumida.com)

### San Jose

Tel.+1-408-321-9660  
FAX.+1-408-321-9308  
[sales@us.sumida.com](mailto:sales@us.sumida.com)